



Knowledge Base > Software & Utilities > Increasing Comm Port Speed on TES Version 3

The information in this article applies to the following machine models:

- Barudan TES 3 connected by serial port to N and D Series Embroidery machines

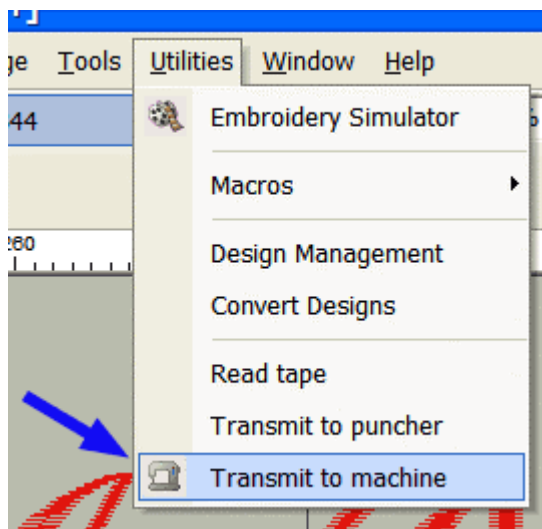
SUMMARY

Barudan's TES software can download patterns directly to an embroidery machine over a serial port. For compatibility with older machine models, TES is set to wait a fraction of a second between each byte it sends. This delay time is adjustable, and we have found that on newer Barudan machines, changing this setting can significantly reduce the download time.

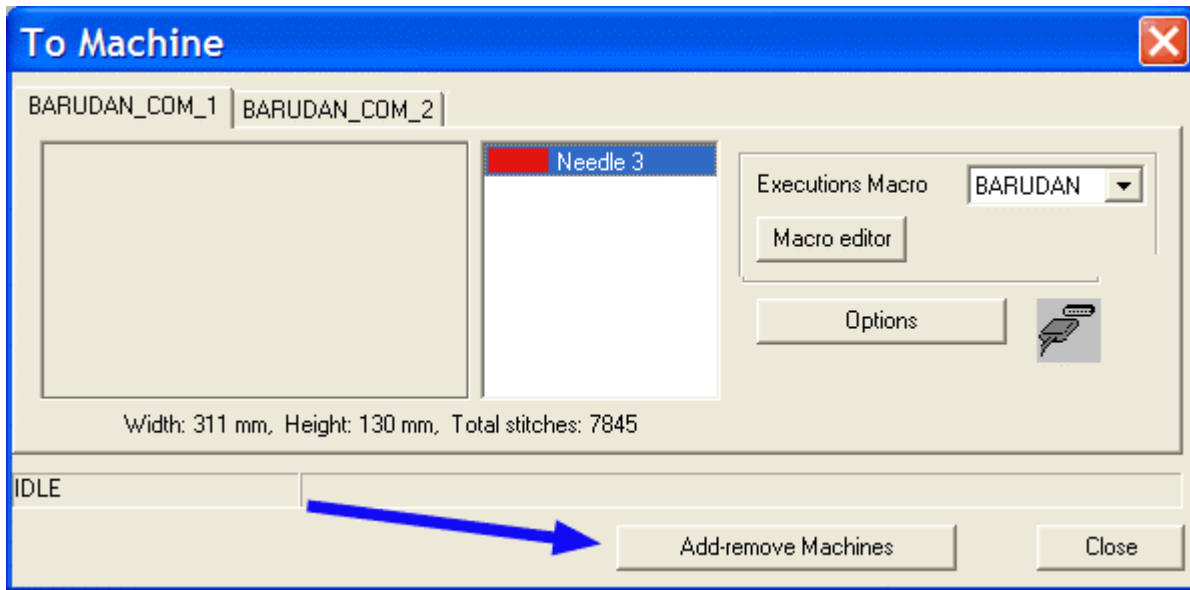
TO ADJUST PORT SPEED:

1. Start TES Version 3 and load a design

On the menu, Select "Utilities" and "Transmit to machine"

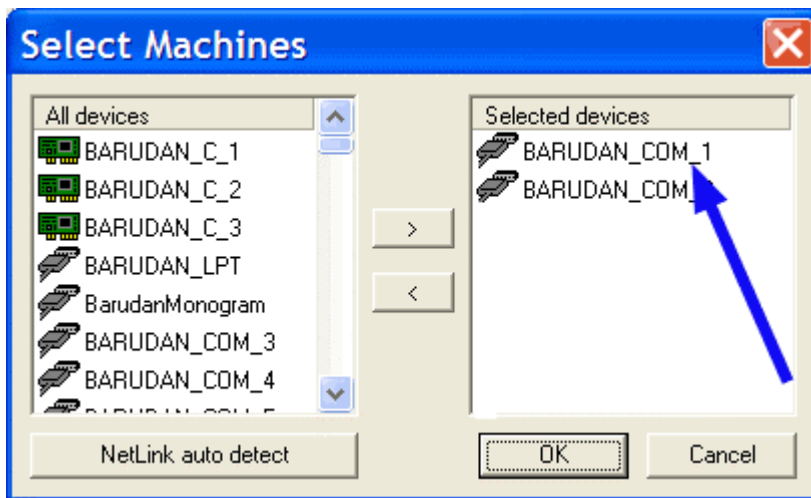


2. At the bottom of the window, click on "[Add-Remove Machine]"



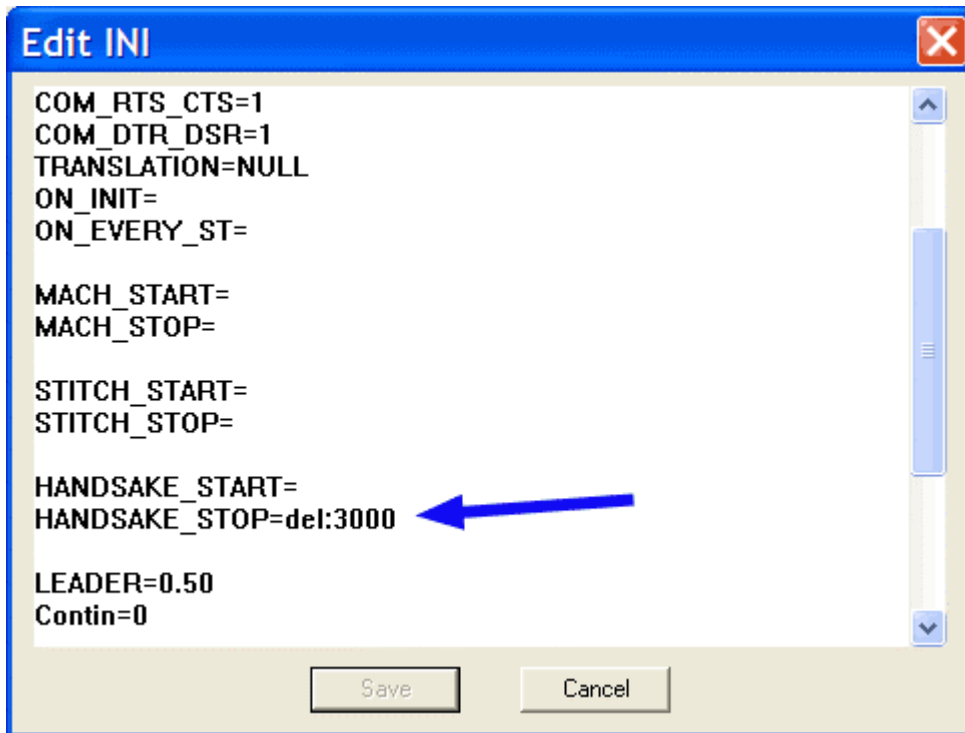
A window will open called "Select Machine"

3. On the right hand column, double-Right click on the desired machine



A window will open called "Edit INI"

4. Scroll down till you see a line called: "HANDSHAKE_STOP=del:3000"



5. Change this last number to a smaller number, such as 10 ("HANDSHAKE_STOP=del:10")
DO NOT CHANGE ANY OTHER NUMBERS OR LINES!
6. Click on [SAVE] on each window

NOTE: If you encounter transmission errors, try a larger number here, up to 3000.