

Barudan

COMPUTERIZED MONOGRAM MACHINE

MODEL **BEAT** ⁸⁰²_{M802} - **YS**

PARTS LIST

V10021

BARUDAN CO., LTD.

ADDRESS 20-TSUKAGOSHI, JOSUIJI
ICHINOMIYA-CITY, AICHI-PREF.
JAPAN

TEL. <0586>76-1137
TELEX 4573268 BARUNA J
CABLE BARUNA ICHINOMIYA

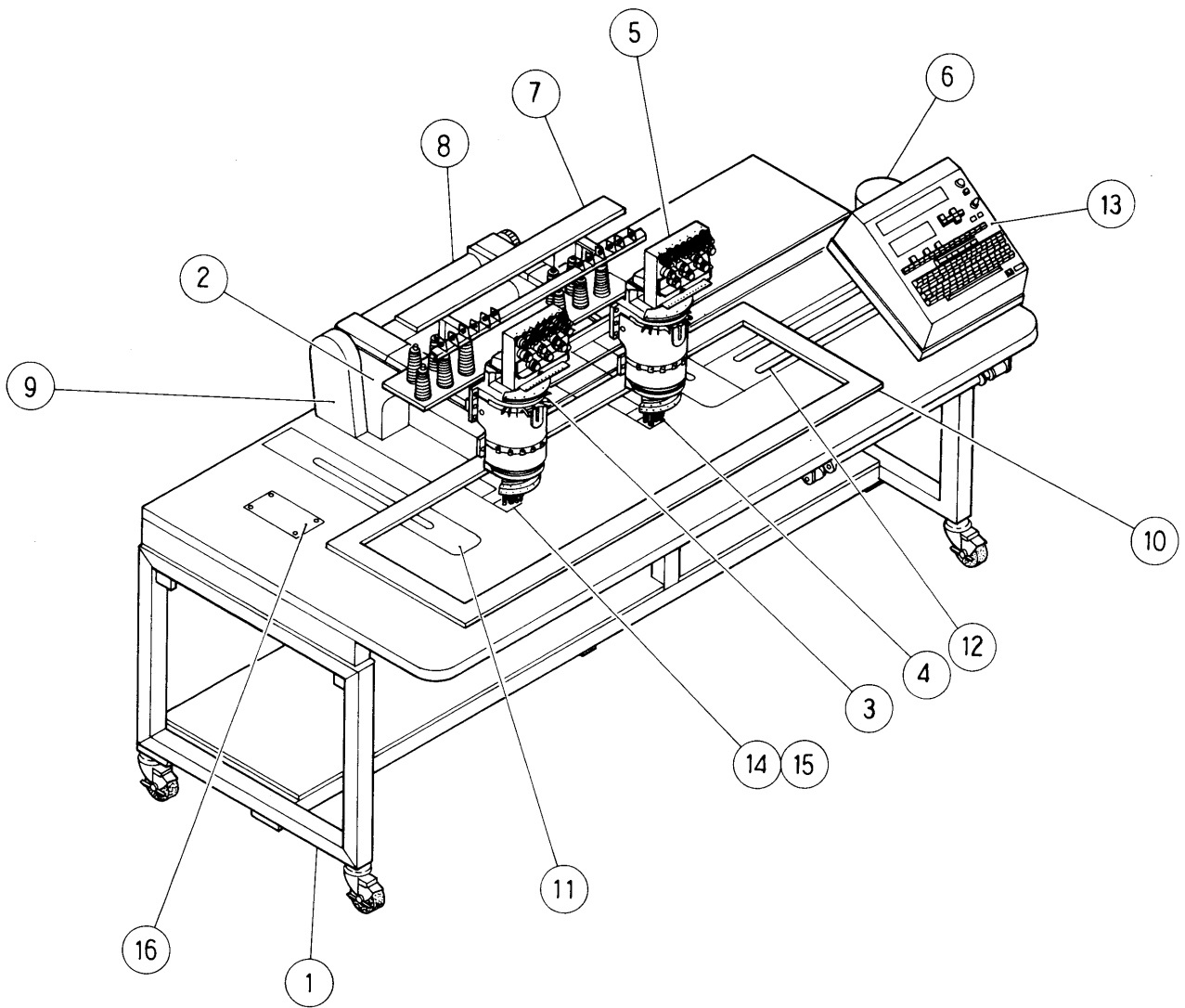
BEAT-802 • M802-YS

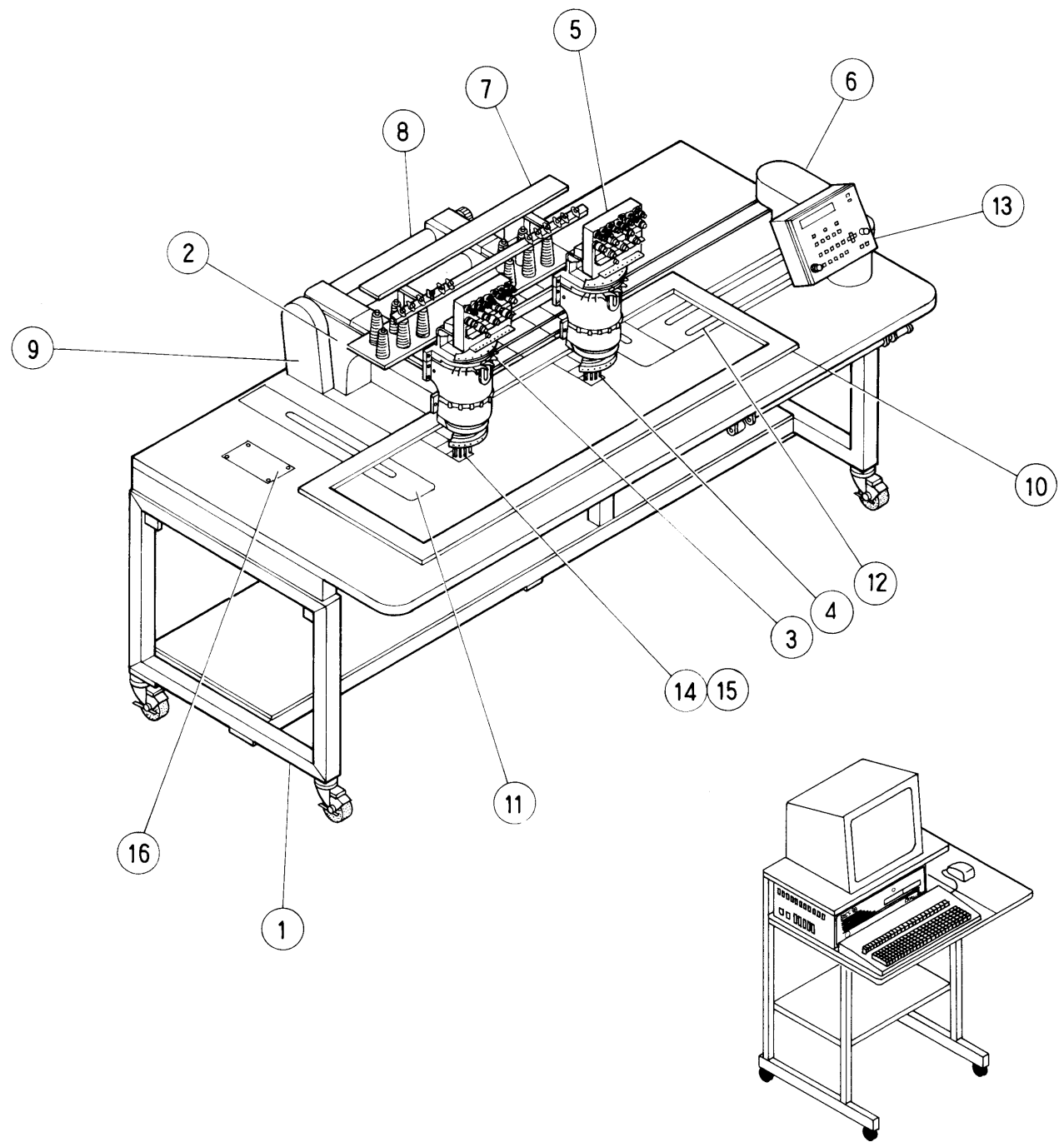
PARTS LIST

Contents

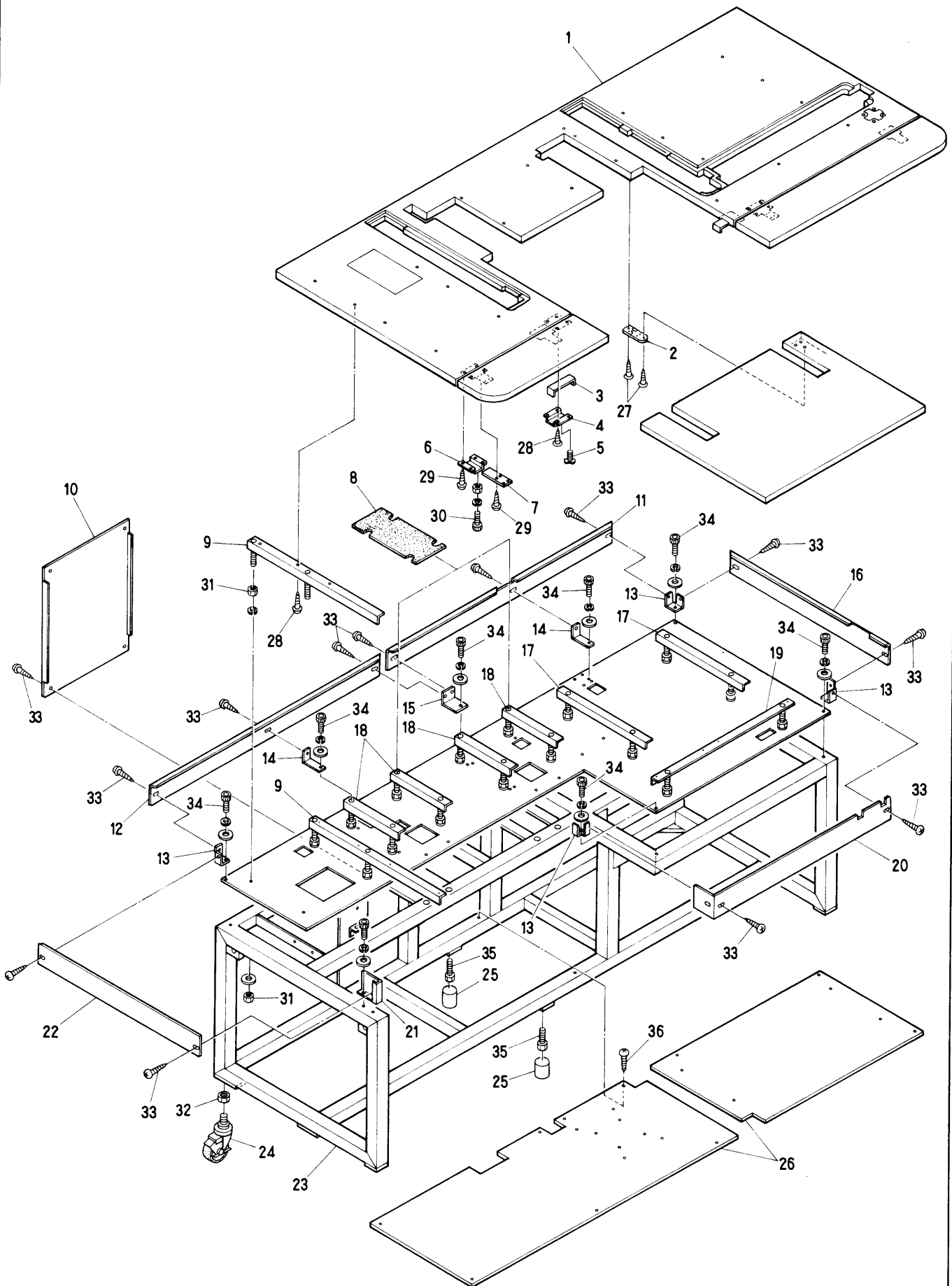
| ITEM No. | |
|----------|--|
| | Machine layout 1 |
| ① | Frame • Table a'ssy 3 |
| ② | Sewing head a'ssy 5 |
| ③ | Take up lever mechanism 7 |
| ④ | Needle bar • Jump mechanism 9 |
| ⑤ | Thread guide mechanism 11 |
| ⑥ | Color change mechanism 13 |
| ⑦ | Option 15 |
| ⑧ | Connecting shaft 17 |
| ⑨ | Drive mechanism 19 |
| ⑩ | Pantograph drive mechanism I 21 |
| ⑪ | Pantograph drive mechanism (H-Direction)II 23 |
| ⑫ | Pantograph drive mechanism (V-Direction)III 25 |
| ⑬ | Control system (BEAT-802) I 27 |
| ⑬ | Control system (BEAT-M802) II 29 |
| ⑭ | Thread cutting mechanism I 31 |
| ⑮ | Thread cutting mechanism II 33 |
| ⑯ | Thread cutting drive mechanismIII 35 |
| | INDEX 37 |

Please specify, in the following manner, your machine model, manufacturing number and embroidery space when you order us with the parts having ※ at the end of the part No. :



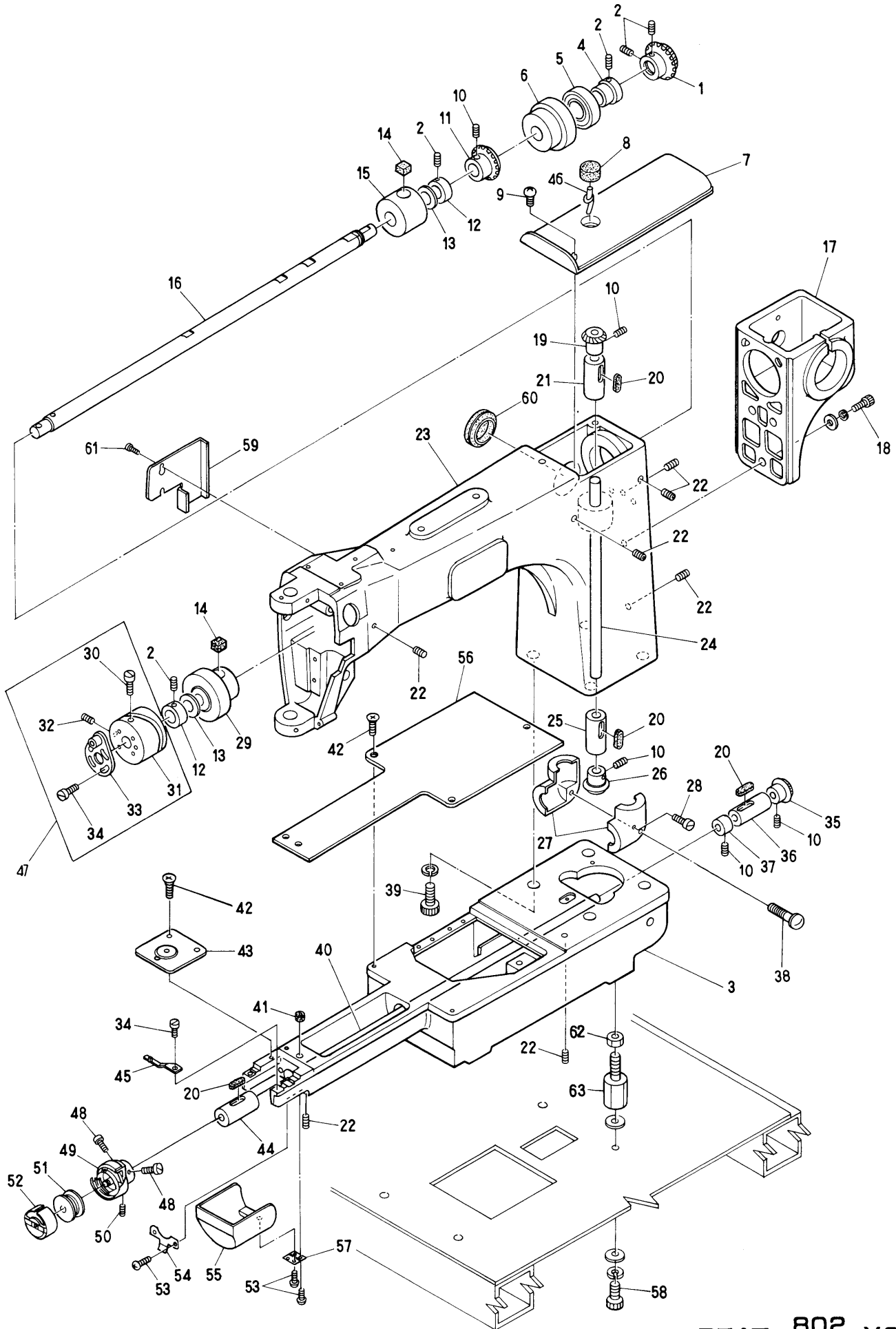






① Frame ・ Table a'ssy

| ITEM | LIST No. | DESCRIPTION | Q'TY | REMARK |
|------|-----------------|-----------------------------------|------|--------|
| 1 | MT 1 2 0 1 8 3 | Table (BEAT-802.320×450) | 1 | |
| 2 | MA 1 5 1 5 0 0 | Center table butterfly plate | 4 | |
| 3 | MA 1 4 0 3 1 0 | Center table support plate | 2 | |
| 4 | MA 1 4 0 3 2 0 | Center table fixing plate bracket | 2 | |
| 5 | A 9 0 1 2 0 3 2 | Knob bolt (M8) | 2 | |
| 6 | MA 1 4 0 3 8 0 | Table support bracket | 4 | |
| 7 | MA 1 4 0 6 2 0 | Table support (AT) | 4 | |
| 8 | MT 1 3 0 3 3 0 | Felt for oil catcher | 2 | |
| 9 | MT 1 2 0 8 4 1 | Table support No.4 (620L) | 2 | |
| 10 | MT 1 1 1 1 8 2 | Frame rear cover | 1 | |
| 11 | MT 1 1 1 1 1 1 | Frame upper cover (Rear) R | 1 | |
| 12 | MT 1 1 1 1 2 1 | Frame upper cover (Rear) L | 1 | |
| 13 | MT 1 1 1 1 5 0 | Frame upper cover bracket No.1 | 4 | |
| 14 | MT 1 1 1 1 7 0 | Frame upper cover bracket No.3 | 2 | |
| 15 | MT 1 1 1 1 6 0 | Frame upper cover bracket No.2 | 1 | |
| 16 | MT 1 1 1 1 0 0 | Frame upper cover (R) | 1 | |
| 17 | MT 1 2 0 8 1 1 | Table support No.1 (410L) | 2 | |
| 18 | MT 1 2 0 8 3 1 | Table support No.3 (260L) | 4 | |
| 19 | MT 1 2 0 8 2 1 | Table support No.2 (650L) | 1 | |
| 20 | MT 1 1 1 0 9 1 | Frame upper cover (Front) | 1 | |
| 21 | MT 1 1 1 1 4 0 | Frame upper cover (L) Front | 1 | |
| 22 | MT 1 1 1 1 3 0 | Frame upper cover (L) | 1 | |
| 23 | MT 1 1 1 0 8 4 | Frame (BEAT-802.320×450) | 1 | |
| 24 | A 9 0 1 2 2 1 6 | Caster 413SA-N-100 (Hammer) | 4 | |
| 25 | MT 1 2 0 9 6 1 | Center mount base | 2 | |
| 26 | MT 1 5 0 0 0 2 | Shelf board (BEAT-802.320×450) | 1 | |
| 27 | | Wood screw 5.1×25 | | |
| 28 | | pias biss M5×25 | | |
| 29 | | Wood screw 5.1×32 | | |
| 30 | | Hex. socket bolt M8×15 | | |
| 31 | | Hex. nut M10 | | |
| 32 | | Hex. nut M20 | | |
| 33 | | Truss screw M4×6 | | |
| 34 | | Hex. socket bolt M4×10 | | |
| 35 | | Hex. bolt M12×50 | | |
| 36 | | Tapping screw M5×25 | | |
| | | | | |
| | | | | |
| | | | | |
| | | | | |
| | | | | |
| | | | | |
| | | | | |
| | | | | |
| | | | | |
| | | | | |
| | | | | |
| | | | | |
| | | | | |
| | | | | |
| | | | | |
| | | | | |
| | | | | |
| | | | | |
| | | | | |



MODEL BEAT 802 -YS
M802

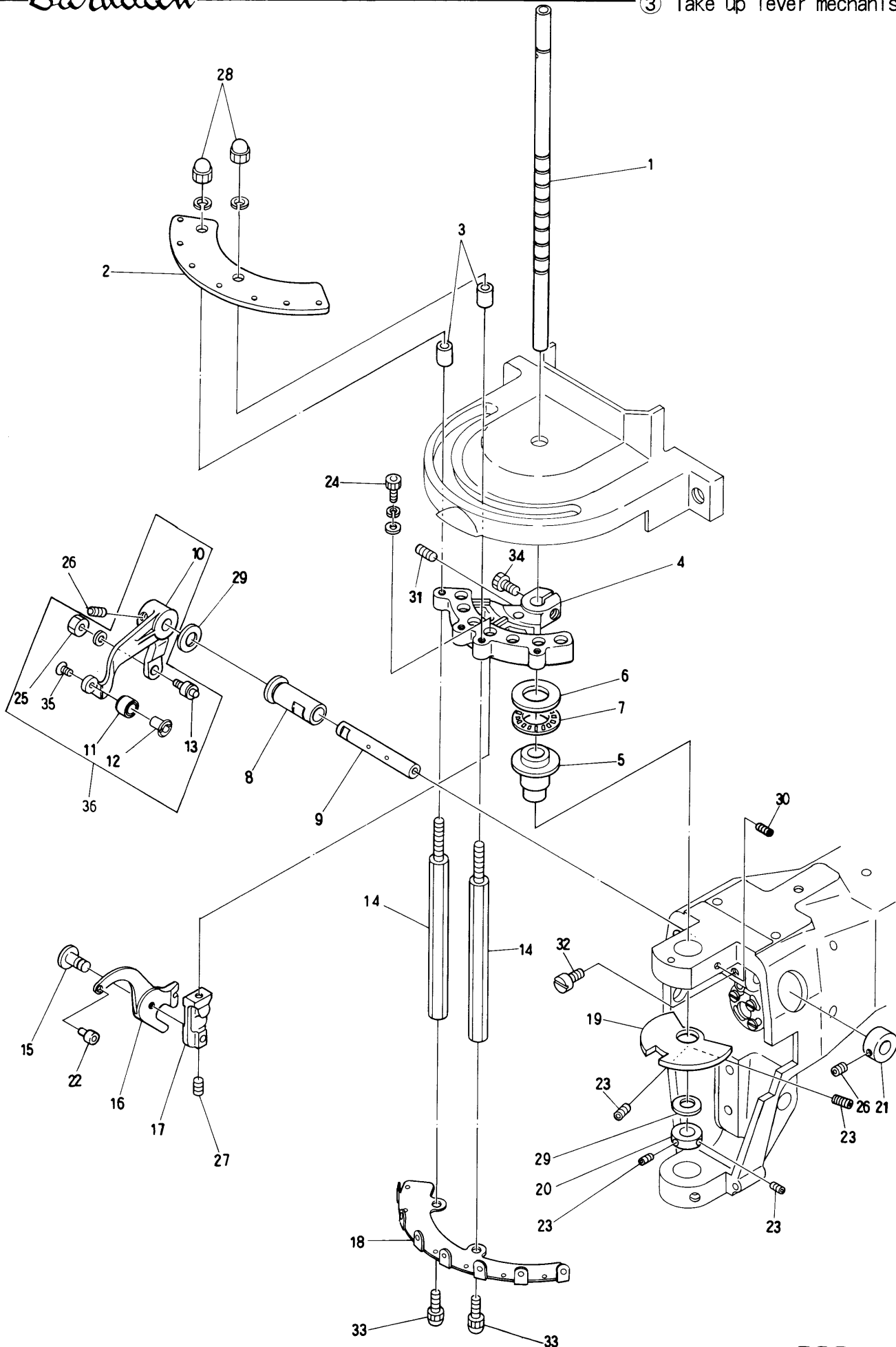
② Sewing head a'ssy

| ITEM | LIST No. | DESCRIPTION | Q'TY | REMARK |
|------|-----------------|---|------|--------|
| 1 | KL 2 2 0 1 0 0 | Top shaft gear (M1.5-25R) | 2 | |
| 2 | | Hex. socket set screw M6×6 (with adhesive) | 2 | |
| 3 | KL 2 1 0 1 1 3 | Bed (SRE-T) | | |
| 4 | KL 2 2 0 0 9 0 | Top shaft bearing collar | 2 | |
| 5 | A 9 0 1 0 0 1 7 | Bearing (6004ZZ) | 2 | |
| 6 | KL 2 2 0 0 4 0 | Top shaft bearing case | 2 | |
| 7 | KL 2 5 0 0 4 0 | Arm top cover | 2 | |
| 8 | KL 2 2 0 1 5 0 | Oil felt D | 2 | |
| 9 | | Truss screw M4×10 | | |
| 10 | | Screw (SM1/4 40×4) | | |
| 11 | KF 2 2 0 1 3 0 | Bevel gear (Top shaft) | 2 | |
| 12 | KL 2 2 0 0 8 0 | Top shaft collar | 4 | |
| 13 | HP 2 3 1 3 9 0 | Thrust washer (Top shaft gear) | 4 | |
| 14 | KL 2 2 0 1 3 0 | Oil felt B | 4 | |
| 15 | KL 2 2 0 0 3 0 | Top shaft metal (Middle) | 2 | |
| 16 | KL 2 2 0 0 0 0 | Top shaft | 2 | |
| 17 | KL 2 1 0 1 4 0 | Arm gear case | 2 | |
| 18 | | Hex. socket bolt M6×25 | | |
| 19 | KF 2 2 0 4 6 0 | Bevel gear (Vertical shaft upper) | 2 | |
| 20 | KL 2 2 0 1 4 0 | Oil felt C | 8 | |
| 21 | KL 2 2 0 0 5 0 | Vertical shaft metal (upper) | 2 | |
| 22 | | Hex. socket set screw M6×8 | | |
| 23 | KB 2 1 0 1 6 0 | Arm | 1 | |
| 24 | KL 2 2 0 0 1 0 | Vertical shaft | | |
| 25 | KL 2 2 0 0 6 0 | Vertical shaft metal (F) | 1 | |
| 26 | KF 2 2 0 4 7 0 | Bevel gear (Vertical shaft lower) | 1 | |
| 27 | KF 2 2 0 2 7 0 | Gear cover set | 1 | |
| 28 | MA 2 1 0 2 1 0 | Bed Adjuster bolt | 1 | |
| 29 | KL 2 2 0 0 2 0 | Top shaft metal (Front) | 1 | |
| 30 | KF 2 3 0 4 2 0 | Cam set screw | 1 | |
| 31 | KB 2 3 0 0 3 0 | Take up lever cam K6 | 1 | |
| 32 | | Screw (SM15/64 28×10) with adhesive | 1 | |
| 33 | KB 2 3 0 0 5 0 | 90° Clamping | 1 | |
| 34 | A 9 0 1 2 0 0 7 | Screw | 6 | |
| 35 | KF 2 2 0 4 8 0 | Bevel gear (Bottom shaft) | 1 | |
| 36 | KL 2 2 0 0 7 0 | Bottom shaft metal (Rear) | 1 | |
| 37 | KF 2 2 0 2 9 0 | Bottom shaft collar | 1 | |
| 38 | | Screw M5×25 | | |
| 39 | | Hex. socket bolt M12×35 | | |
| 40 | KC 2 2 0 2 1 0 | Bottom shaft | 1 | |
| 41 | KL 2 2 0 1 2 0 | Oil felt A | 1 | |
| 42 | KF 2 5 0 9 0 0 | Needle plate set screw (SM11/64 40×7) | 6 | |
| 43 | MA 2 5 0 1 3 1 | Needle plate | 1 | |
| 44 | KF 2 2 0 2 3 0 | Bottom shaft metal (Front) | 1 | |
| 45 | KC 2 2 0 6 4 0 | Rotating hook bobbin case holder position bracket | 1 | |



Barudan

③ Take up lever mechanism

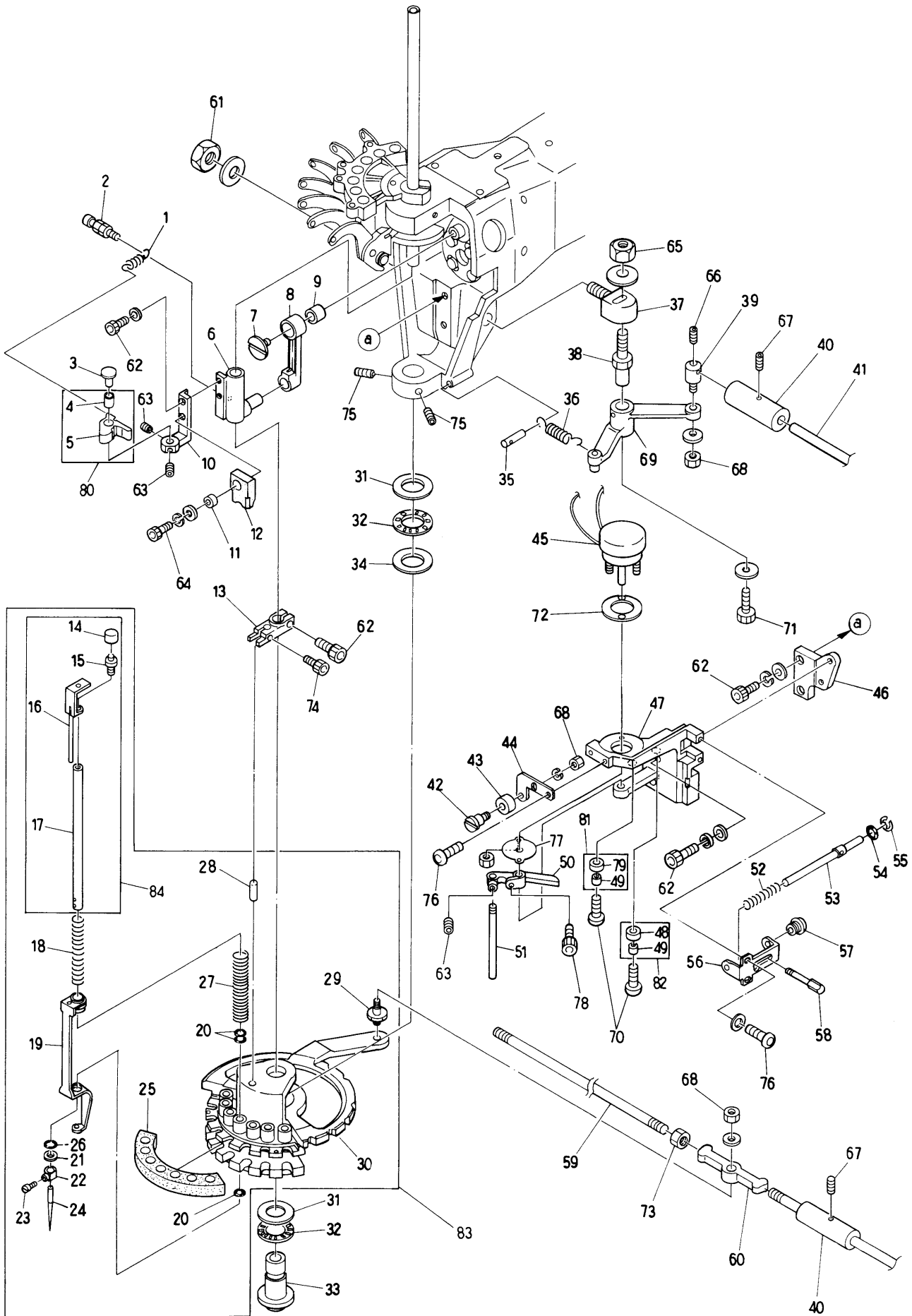


MODEL BEAT 802 -YS
M802

③ Take up lever mechanism

(N = Needle Q'TY)

| ITEM | LIST No. | DESCRIPTION | Q'TY | REMARK |
|------|-----------|---|------|--------|
| 1 | KB 230161 | Driving shaft | 1 | |
| 2 | HB 240180 | Thread guide plate (7) | 1 | |
| | HB 240290 | Thread guide plate (5) | 1 | |
| 3 | KB 240020 | Thread fixing collar | 2 | |
| 4 | HB 230290 | Take up lever fixing bracket | 1 | |
| 5 | KB 230090 | Driver shaft upper metal | 1 | |
| 6 | A 9011152 | Thrust needle bearing innerring (WS1528) | 1 | |
| 7 | A 9011021 | Thrust bearing NTB-1528 | 1 | |
| 8 | KB 230100 | Take up lever driving shaft metal | 1 | |
| 9 | HB 230110 | Take up lever driving shaft | 1 | |
| 10 | KB 230120 | Take up lever driving lever | 1 | |
| 11 | HB 230320 | Take up lever driving roller | 1 | |
| 12 | HB 230331 | Take up lever driving roller shaft | 1 | |
| 13 | KF 230500 | Take up lever roller a'ssy | 1 | |
| 14 | KB 240010 | Thread fixing rod | 2 | |
| 15 | HB 230310 | Take up lever shaft | 1 | |
| 16 | KB 230150 | Take up lever | N×1 | |
| 17 | KB 230140 | Take up lever base | N×1 | |
| 18 | HB 240171 | Thread hanger (7) | 1 | |
| | HB 240280 | Thread hanger (5) | 1 | |
| 19 | KB 230130 | Take up lever sttocker | 1 | |
| 20 | HB 230160 | Driving shaft set collar | 1 | |
| 21 | HB 230270 | Needle bar driving lever fixed pin set collar | 1 | |
| 22 | KF 230580 | Take up lever thread eyelet ceramic | N×1 | |
| 23 | | Hex. socket set screw M4×4 (with adhesive) | 2 | |
| 24 | | Hex. socket bolt M4×12 | | |
| 25 | | Hex. nut SM7/32 | | |
| 26 | | Hex. socket set screw M5×6 (with adhesive) | 2 | |
| 27 | | Hex. socket set screw M3×5 (with adhesive) | N×1 | |
| 28 | | Cap nut M4 | | |
| 29 | A 9012164 | Thrust washer (R-TW0815) | 2 | |
| 30 | | Hex. socket set screw M6×6 | | |
| 31 | | Hex. socket set screw (C.P) M4×5 | | |
| 32 | | Screw (SM11/64×11) | | |
| 33 | | Cap bolt M4×8 | | |
| 34 | | Hex. socket bolt M4×15 | | |
| 35 | HB 230650 | Flush screw (with adhesive) | 1 | |
| 36 | KB 230310 | Take up lever drive lever a'ssy | 1 | |
| | | | | |
| | | | | |
| | | | | |
| | | | | |
| | | | | |
| | | | | |
| | | | | |
| | | | | |
| | | | | |
| | | | | |
| | | | | |



④ Needle bar - Jamp mechanism

(N=needle Q)

| ITEM | LIST No. | DESCRIPTION | Q'TY | REMARK |
|------|-----------------|--------------------------------------|------|--------|
| 1 | HB 2 3 0 4 0 1 | Needle bar driver return spring | 1 | |
| 2 | HB 2 3 0 5 9 0 | Fixed screw for return spring | 1 | |
| 3 | HB 2 3 0 3 9 0 | Needle bar driver fixing pin | 1 | |
| 4 | A 9 0 1 2 1 9 0 | DU Bush (MB0606DU) | 1 | |
| 5 | HB 2 3 0 3 8 1 | Needle bar driver | 1 | |
| 6 | KB 2 3 0 0 8 0 | Needle bar driver guide block | 1 | |
| 7 | KB 2 3 0 0 7 0 | 90° Crank left-handed screw | 1 | |
| 8 | KB 2 3 0 0 6 0 | Crank rod | 1 | |
| 9 | A 9 0 1 1 1 1 5 | Needle bearign (K9×12×10T2) | 1 | |
| 10 | HB 2 3 0 3 7 1 | Needle bar driver fixing base | 1 | |
| 11 | HB 2 3 0 4 2 0 | Needle bar driver stopper set collar | 1 | |
| 12 | HB 2 3 0 4 1 4 | Needle bar driver stopper | 1 | |
| 13 | HB 2 3 0 1 7 0 | Driving shaft fixed plate | 1 | |
| 14 | KN 2 3 1 3 5 0 | Needle bar cap | N×1 | |
| 15 | HB 2 3 0 5 3 1 | Needle bar guide fitting screw | N×1 | |
| 16 | HB 2 3 0 5 2 1 | Needle bar guide | N×1 | |
| 17 | HB 2 3 0 5 1 1 | Needle bar | N×1 | |
| 18 | HB 2 3 0 5 4 0 | Needle bar sprign (upper) | N×1 | |
| 19 | KG 2 3 0 0 2 0 | Pressure foot | N×1 | |
| 20 | KF 2 3 0 9 1 0 | O-Ring (S) | N×3 | |
| 21 | KF 2 3 0 9 3 0 | Spacer | N×1 | |
| 22 | KF 2 3 0 2 3 0 | Needle clamp | N×1 | |
| 23 | KF 2 3 0 2 4 0 | Needle clamp screw (SM9/64 40) | N×1 | |
| 24 | KF 2 3 0 2 5 0 | Needle (DBK5-11) | N×1 | |
| 25 | KL 2 3 0 1 1 0 | Turret plate oil pad | 1 | |
| 26 | KF 2 3 0 9 2 0 | O-Ring (L) | N×1 | |
| 27 | KF 2 3 0 2 1 0 | Pressure foot spring | N×1 | |
| 28 | A 9 0 1 2 2 9 1 | Parallel pin $\phi 5 \times 14 \ell$ | 1 | |
| 29 | HB 2 3 0 5 5 0 | Turret plate joint pin | 1 | |
| 30 | HB 2 3 0 4 4 1 | Turret plate (5) | 1 | |
| | HB 2 3 0 4 3 1 | Turret plate (7) | 1 | |
| 31 | A 9 0 1 1 0 2 3 | Thrust bearing outer (GS1528) | 2 | |
| 32 | A 9 0 1 1 0 2 1 | Thrust bearing (NTB-1528) | 2 | |
| 33 | HB 2 3 0 1 4 0 | Driver shaft under metal | 1 | |
| 34 | A 9 0 1 1 0 2 2 | Thrust washer (AS-1528) | 1 | |
| 35 | KF 2 3 0 6 7 0 | Lock lever spring pin | 1 | |
| 36 | KF 2 3 0 6 6 1 | Lock lever spring | 1 | |
| 37 | KF 2 3 0 6 5 0 | Lock lever bracket | 1 | |
| 38 | KF 2 3 0 6 3 0 | Lock lever shaft | 1 | |
| 39 | KF 2 3 0 6 4 0 | Lock connecting bar clamp | 1 | |
| 40 | KF 3 3 0 3 8 1 | Lock bar hand grip | 2 | |
| 41 | KC 3 3 0 4 1 0 | Lock connecting rod (2M) | 3 | |
| 42 | HB 2 3 0 4 6 0 | Needle bar stopper fixed pin | 1 | |
| 43 | HB 2 3 0 4 7 0 | Needle bar stopper | 1 | |
| 44 | KB 2 3 0 1 7 0 | Needle bar stopper fixed bracket | 1 | |

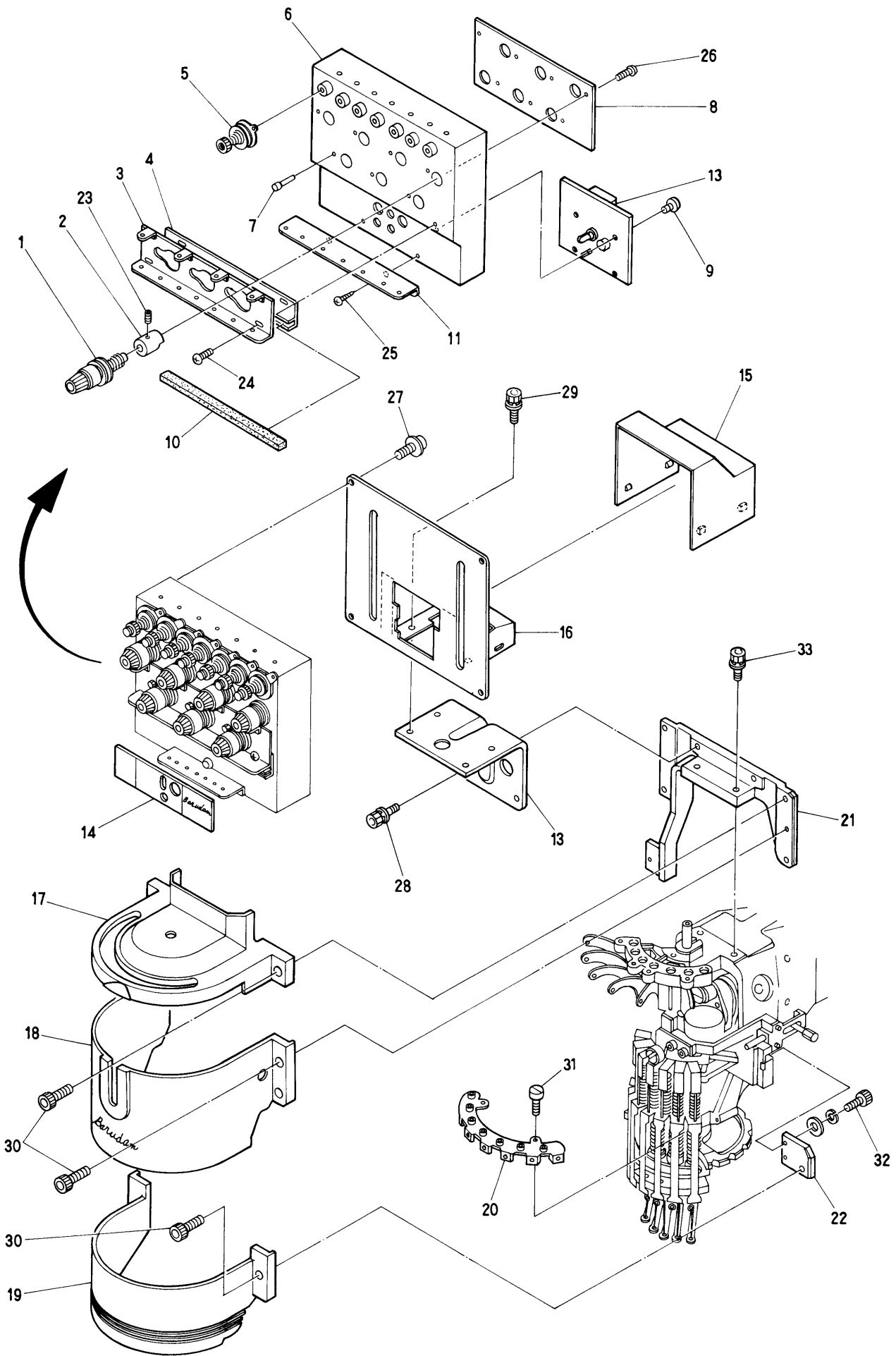


④ Needle bar ▪Jamp mechanism (※ change the LIST No. by machine type)

| ITEM | LIST No. | DESCRIPTION | Q'TY | REMARK |
|------|-------------|---|------|------------|
| 45 | A9056020 | Rotary solenoid (3ER35-3×8×9) | 1 | |
| 46 | KB210170 | Soelnoind bracket fixing base | 1 | |
| 47 | KB240030 | Jump soelnoind fixing bracket | 1 | |
| 48 | HB240050 | Eccentric collar (φ11) | 1 | |
| 49 | HB240040 | Eccentric stopper | 2 | |
| 50 | HB240020 | Jump soelnoind lever | 1 | |
| 51 | HB240030 | Jump soelnoind lever pin | 1 | |
| 52 | HB240110 | Cancel return spring | 1 | |
| 53 | HB240070 | Cancel rod | 1 | |
| 54 | A9014051 | O-Ring P-5 | 1 | |
| 55 | A9012051 | E-Ring φ6 | 1 | |
| 56 | KB240040 | Cancel bracket | 1 | |
| 57 | HB240090 | Cancel rod guide | 1 | |
| 58 | HB240080 | Manual cancel pin | 1 | |
| 59 | KC330310380 | Turret plate connecting rod (L=330) | 1 | ※ |
| 60 | A9012005 | Uniball joint (NMBRD4-020N) | 1 | first head |
| | A9012003 | Uniball joint (NMBRD4-020N) | 1 | final gead |
| 61 | | Hex, nut M10 | | |
| 62 | | Hex, socket bolt M4×12 | | |
| 63 | | Hex, socket set screw M4×4 (with adhesive) | 3 | |
| 64 | | Hex, socket bolt M4×15 | | |
| 65 | | Hex, nut M8 | | |
| 66 | | Hex, socket set screw M4×6 | | |
| 67 | | Hex, socket set screw M5×5 | | |
| 68 | | Hex, nut M4 | | |
| 69 | KL230280 | Lock lever | 1 | |
| 70 | | Hex, socket button bolt M4×12 (with adhesive) | 2 | |
| 71 | | Hex, socket bolt M5×10 | | |
| 72 | HB230560 | Sheet for rotary solenoid | 1 | |
| 73 | | Hex, nut M5 | | |
| 74 | | Hex, socket bolt M3×12 (with adhesive) | 1 | |
| 75 | A9012053 | Hex, socket set screw M6×0.75×8 | 2 | |
| 76 | | Hex, socket button bolt M4×10 | | |
| 77 | HB230580 | Solenoid prevention noise cover | 1 | |
| 78 | | Hex, socket bolt M4×8 | | |
| 79 | HB240310 | Eccentric collar (φ12) | 1 | |
| 80 | HB230700 | Needle bar driver lever a'ssy | 1 | |
| 81 | HB240340 | Eccentric stopper a'ssy (φ12) | 1 | |
| 82 | HB240330 | Eccentric stopper a'ssy (φ11) | 1 | |
| 83 | HB230600 | Turret plate a'ssy (YS) | 1 | |
| | HB230610 | Turret plate a'ssy (YF) | 1 | |
| 84 | HB230570 | Needle bar driver a'ssy | 1 | |
| | | | | |
| | | | | |
| | | | | |

Barudan

⑤ Thread guide mechanism

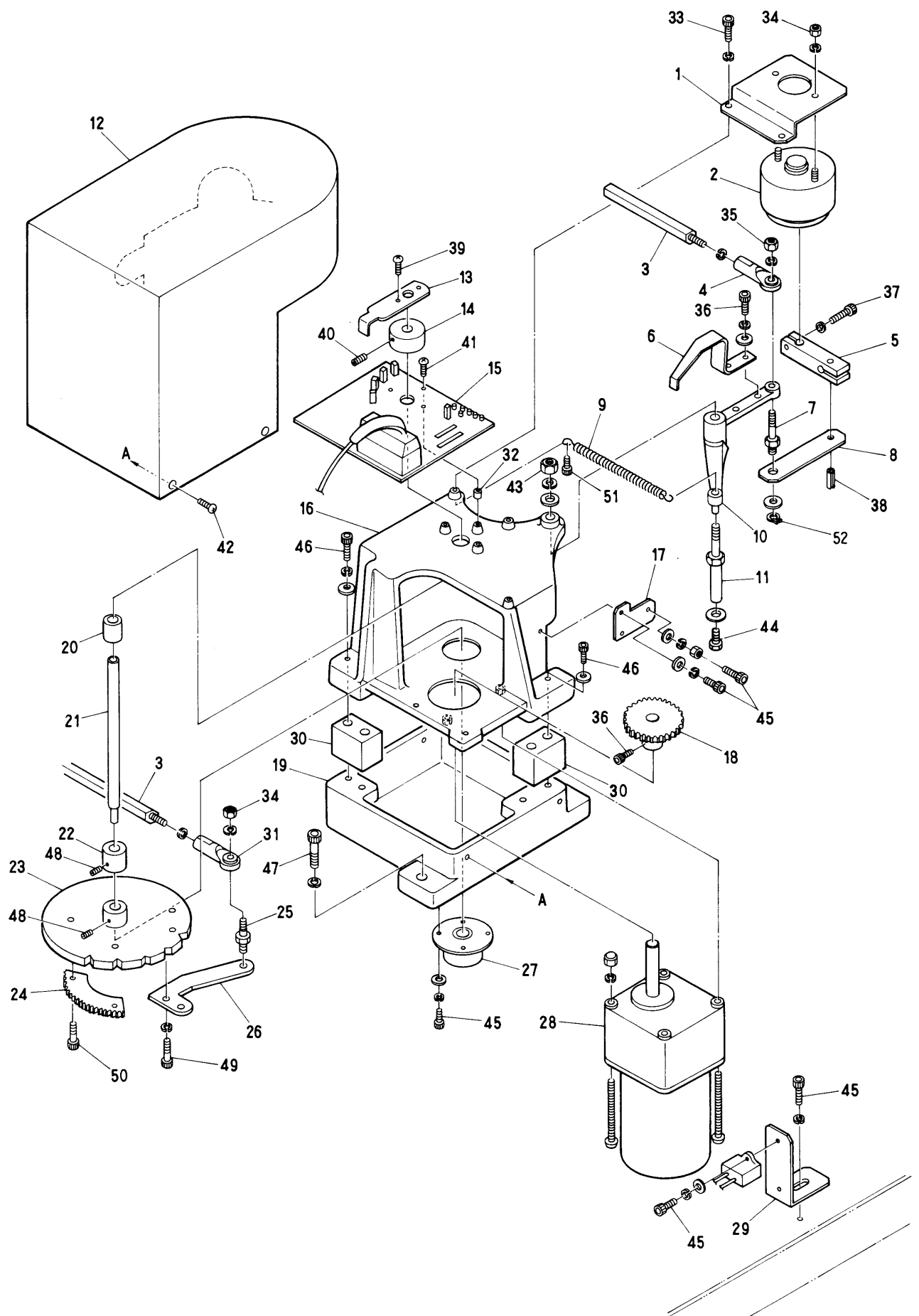


MODEL BEAT 802 -YS
M802

⑤ Thread guide mechanism

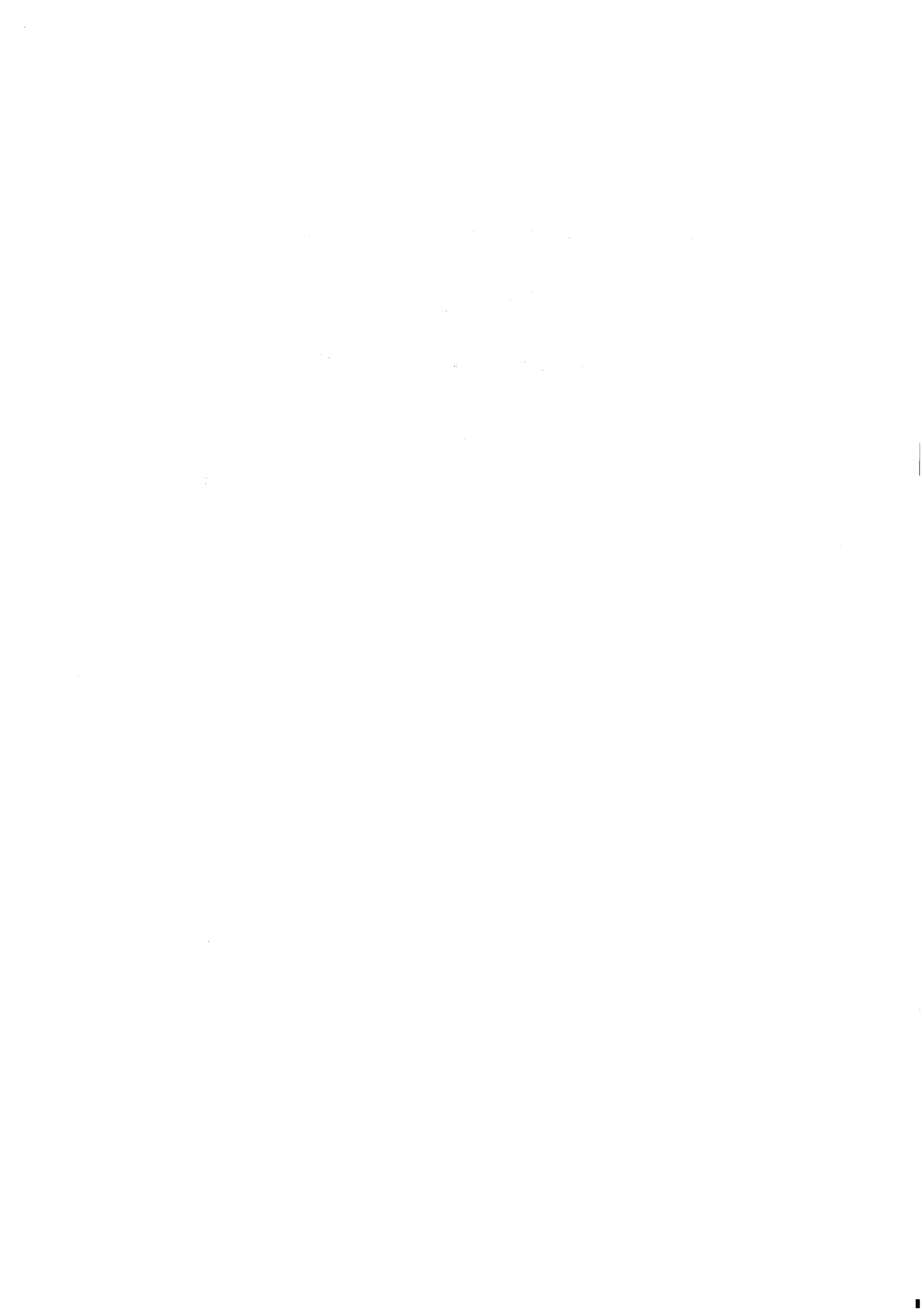
(N=Needle Q'ty)

| ITEM | LIST No. | DESCRIPTION | Q'TY | REMARK |
|------|----------------|---|------|------------------------|
| 1 | HP 2 4 1 4 1 0 | Dial type tension unit complete | N×1 | |
| 2 | HP 2 4 1 1 5 0 | Tension base (with screw) | N×1 | |
| 3 | HP 2 4 1 1 8 0 | First thread guide (7) | 1 | |
| | HP 2 4 1 1 7 0 | First thread guide (5) | 1 | |
| 4 | HP 2 4 1 4 6 0 | Thread guide felt fixing plate (7) | 1 | |
| | HP 2 4 1 4 5 0 | Thread guide felt fixing plate (5) | 1 | |
| 5 | KG 2 4 1 0 2 0 | Upper tension unit complete | N×1 | |
| 6 | HP 2 4 1 1 2 2 | Tension base (7) | 1 | HP241160 HP241150 |
| | HP 2 4 1 1 1 2 | Tension base (5) | 1 | HP241160 HP241150 |
| 7 | HP 2 4 1 1 6 0 | Upper thread detection pin | N×1 | |
| 8 | HP 2 4 1 3 8 1 | Tension earth plate (7) | 1 | |
| | HP 2 4 1 3 7 1 | Tension earth plate (5) | 1 | |
| 9 | | Pan screw 2×8 | | |
| 10 | HP 2 4 1 4 8 0 | Thread guide felt (7) | 1 | |
| | HP 2 4 1 4 7 0 | Thread guide felt (5) | 1 | |
| 11 | HB 2 4 0 2 6 0 | Second thread guide plate (7) | 1 | |
| | HB 2 4 0 2 7 0 | Second thread guide plate (5) | 1 | |
| 12 | EBN 0 1 1 0 0 | Head board for thread cutting (108800004) | 1 | There is thread cut |
| | EBN 0 0 6 5 0 | Thread cut sensorium board (70204200) | 1 | There is no thread cut |
| 13 | KB 2 4 0 0 5 1 | Tension base bracket | 1 | |
| 14 | KU 2 4 1 4 0 0 | Tension base label | 1 | There is thread cut |
| | HP 2 4 1 4 0 0 | Tension base label | 1 | There is no thread cut |
| 15 | KB 2 4 0 1 0 0 | Tension cable cover | 1 | |
| 16 | KB 2 4 0 0 6 0 | Tension base (7) | 1 | |
| | KB 2 4 0 0 7 0 | Tension base (5) | 1 | |
| 17 | KB 2 5 0 0 2 0 | Sewing head cover A | 1 | |
| 18 | KB 2 5 0 0 3 0 | Sewing head cover B | 1 | |
| 19 | KB 2 5 0 0 4 0 | Sewing head cover C | 1 | |
| 20 | KG 2 5 0 0 1 0 | Thread end trap unit a'ssy (7) | 1 | |
| | HP 2 5 0 0 5 0 | Thread end trap unit a'ssy (5) | 1 | |
| 21 | KB 2 5 0 0 5 0 | Sewing head fixing bracket | 1 | |
| 22 | KB 2 5 0 0 6 0 | Sewing head fixing stay | 1 | |
| 23 | | Set screw (SM11/64 40×5.5) | | |
| 24 | | Truss screw M4×6 | | |
| 25 | | Tapping screw M3.5×8 | | |
| 26 | | Pan screw M3×4 | | |
| 27 | | Pan screw with washer M4×8 | | |
| 28 | | Hex.socket bolt with washer M5×15 (with adhesive) | 2 | |
| 29 | | Hex.socket bolt with washer M5×10 (with adhesive) | 4 | |
| 30 | | Hex.socket bolt M4×6 | | |
| 31 | | Screw (SM9/64 40×10) | | |
| 32 | | Hex.socket bolt M4×15 | | |
| 33 | | Hex.socket bolt with washer M5×20 (with adhesive) | 2 | |
| | | | | |
| | | | | |



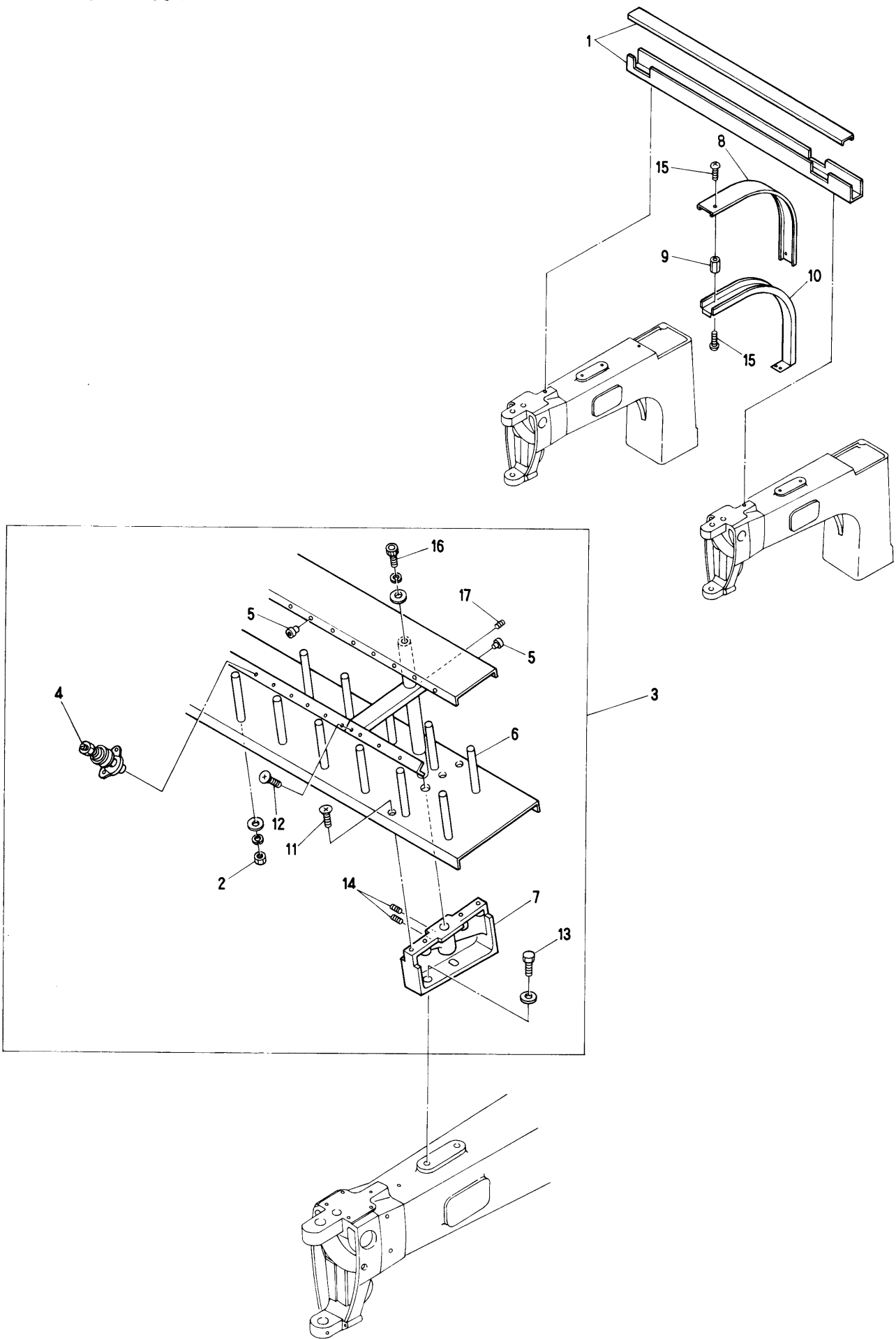
⑥ Color change mechanism

| ITEM | LIST No. | DESCRIPTION | Q'TY | REMARK |
|------|-----------------|--|------|--------|
| 1 | KC 3 3 0 2 6 0 | Bracket lock rotary solenoid | 1 | |
| 2 | KC 3 3 0 8 5 0 | Rotary solenoid (6SR-25 27×4×9 L=15) | 1 | |
| 3 | KC 3 3 0 5 1 0 | Hex. connecting bar (L) | 1 | |
| 4 | A 9 0 1 2 0 0 2 | Uni ball joint (PR-6) | 1 | |
| 5 | KN 3 3 0 2 4 0 | Lock solenoid lever | 1 | |
| 6 | KC 3 3 0 2 9 0 | Lock detection plate | 1 | |
| 7 | KC 3 3 0 2 3 0 | Lock lever pin | 1 | |
| 8 | KN 3 3 0 2 5 0 | Lock lever link | 1 | |
| 9 | MT 3 3 0 6 9 0 | Spring | 1 | |
| 10 | KG 2 3 0 6 1 0 | Lock lever | 1 | |
| 11 | KF 2 3 0 6 3 0 | Lock lever shaft | 1 | |
| 12 | MT 3 3 0 8 0 1 | Box cover | 1 | |
| 13 | HH 3 3 0 2 8 1 | Detection plate | 1 | |
| 14 | KC 3 3 0 1 7 0 | Plate collar | 1 | |
| 15 | EBN 0 0 6 6 0 | SDU Collar change bord (7020-4100) | 1 | |
| 16 | KC 3 3 0 1 3 0 | Needle turning unit base | 1 | |
| 17 | KE 3 3 0 9 8 0 | Lock lever stopper | 1 | |
| 18 | KC 3 3 0 2 1 0 | Needle turning gear No.1 (0.8M50T) | 1 | |
| 19 | MA 3 3 0 7 0 0 | Box base | 1 | |
| 20 | KC 3 3 0 1 9 0 | Oilless metal | 1 | |
| 21 | KC 3 3 0 1 6 1 | Needle turning shaft | 1 | |
| 22 | KC 3 3 0 1 8 0 | Collar φ10 | 1 | |
| 23 | KG 3 3 0 1 5 0 | US Control turning plate | 1 | |
| 24 | KG 3 3 0 2 2 0 | Needle turning gear No.2 | 1 | |
| 25 | KF 2 3 0 3 6 0 | Turret plate joint pin | 1 | |
| 26 | KL 3 3 0 0 4 0 | Turret plate lever | 1 | |
| 27 | KC 3 3 0 6 1 0 | Oilless bearing (OCHIAI) S/S LSB-G8-080V | 1 | |
| 28 | KC 3 3 0 8 1 0 | Geard motor (RM-F6A5PC3-AS-120) | 1 | |
| 29 | MT 3 3 0 7 9 0 | Color change motor condencer bracket | 1 | |
| 30 | KL 3 3 0 0 5 0 | Unit base spacer | 2 | |
| 31 | A 9 0 1 2 0 0 1 | Uni ball joint (NMB RD4 020R) | 1 | |
| 32 | A 9 0 1 2 2 0 8 | Spacer (5×4) | 3 | |
| 33 | | Hex. socket bolt M5×12 | | |
| | | Hex. socket bolt M5×15 | | |
| 34 | | Hex. nut M5 | | |
| 35 | | Hex. nut M6 | | |
| 36 | | Hex. socket bolt M4×8 | | |
| 37 | | Hex. socket bolt M5×12 | | |
| 38 | | Spring pin 6×12 | | |
| 39 | | Truss screw M3×6 | | |
| 40 | | Hex. socket set screw M5×10 | | |
| 41 | | Truss screw M3×10 | | |
| 42 | | Truss screw (Black) M5×10 | | |
| 43 | | Hex. nut M8 | | |
| 44 | | Hex. bolt M5×15 | | |

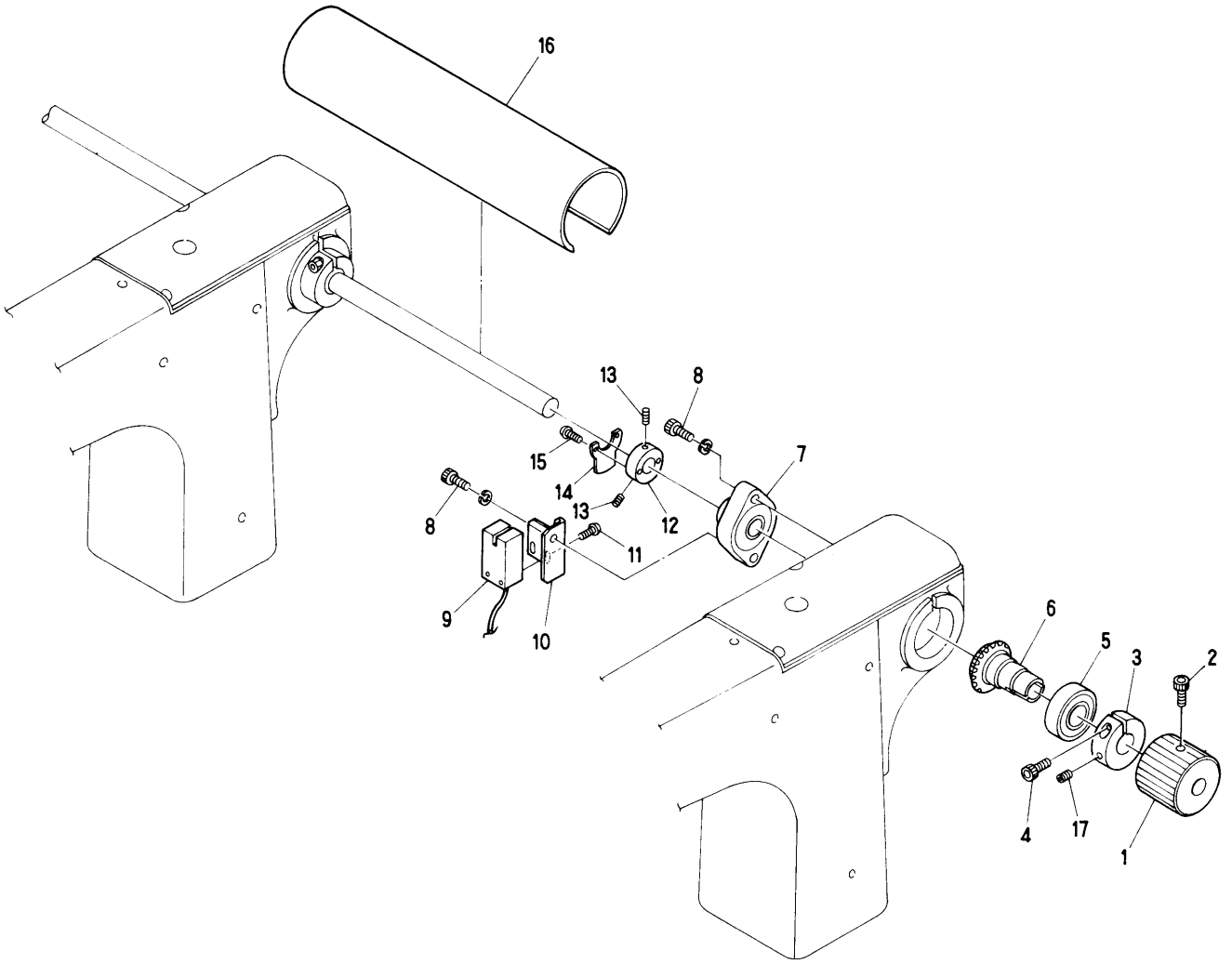


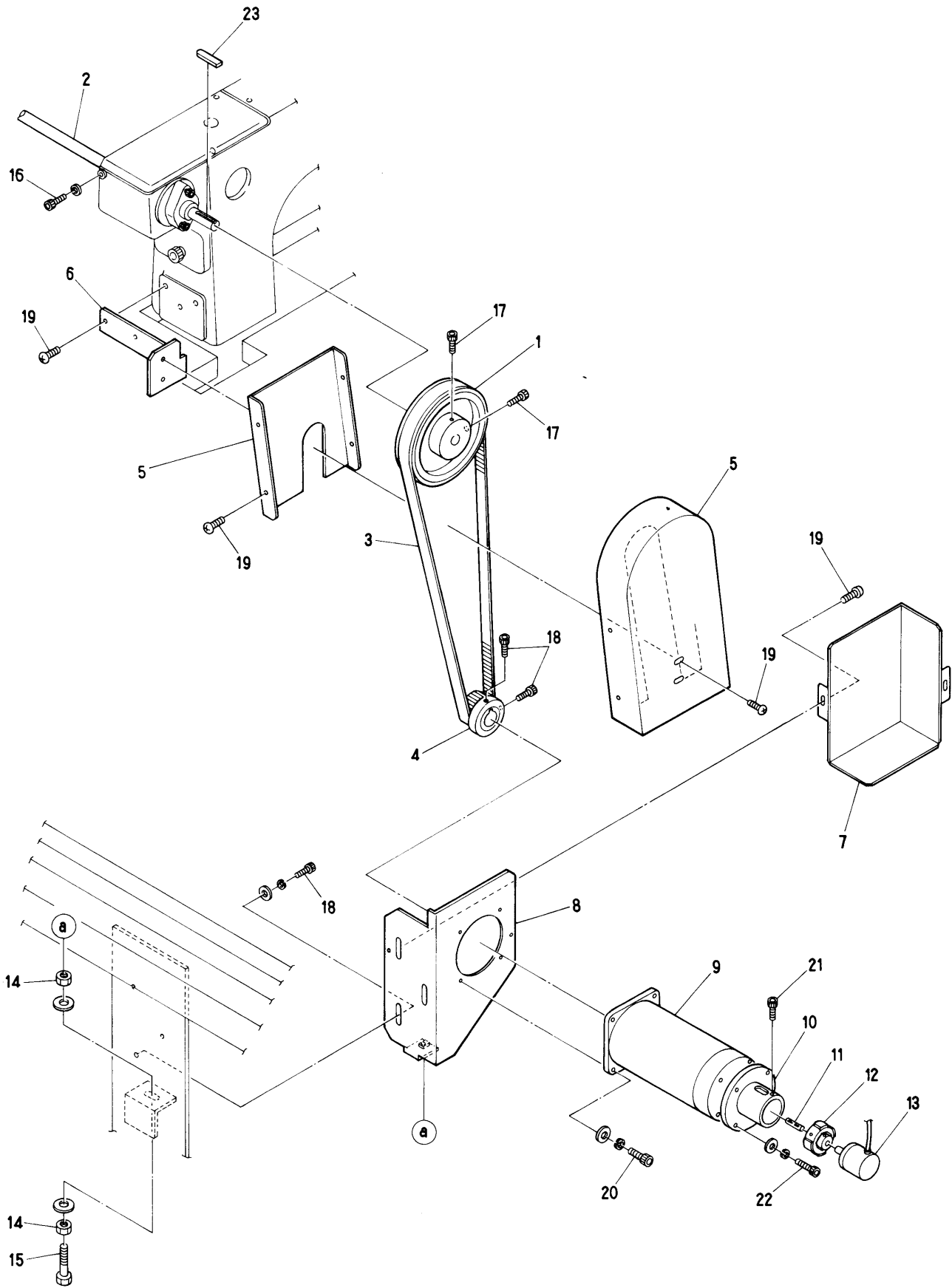
Barudan

⑦ Option



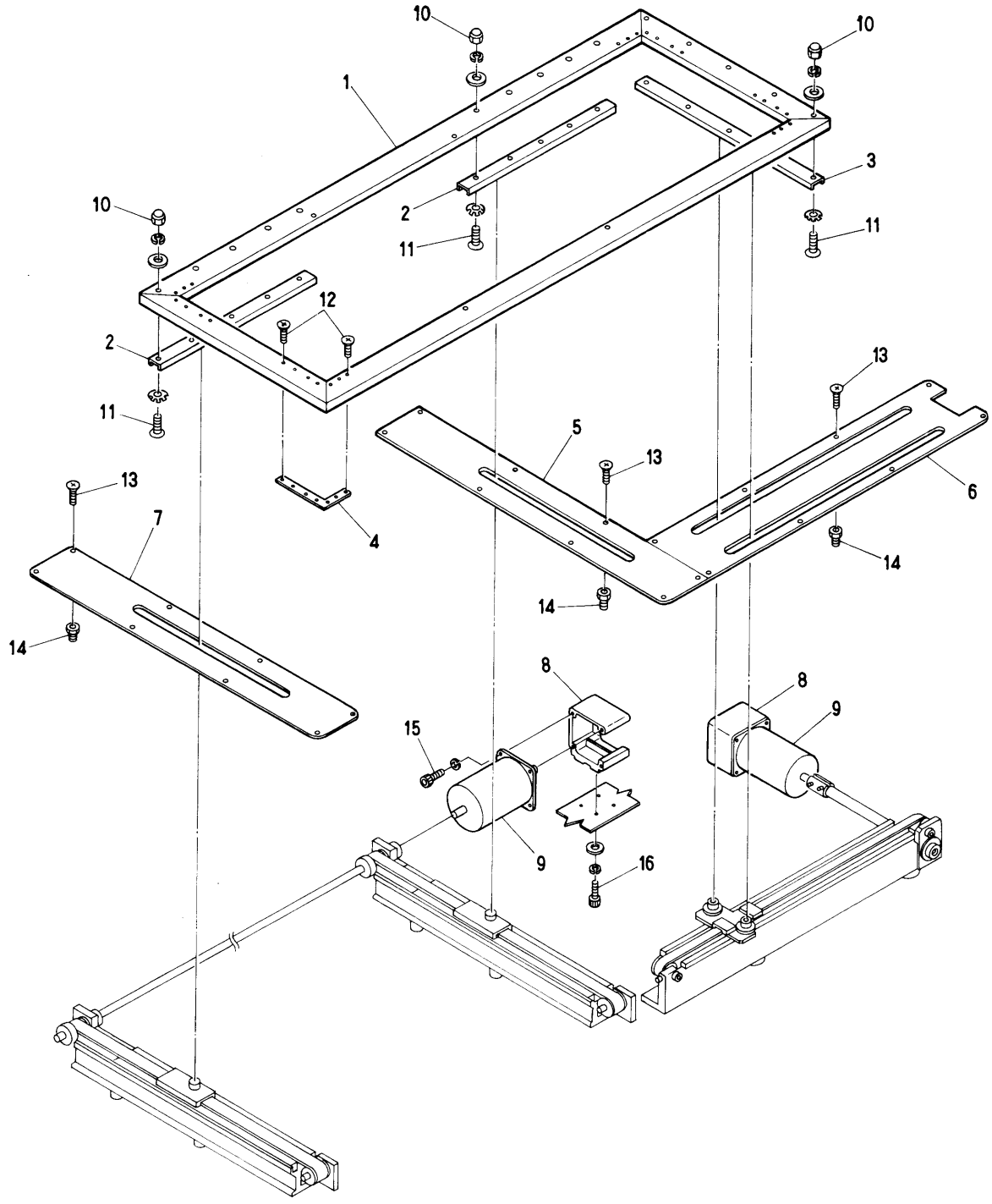
MODEL BEAT 802 -YS
M802

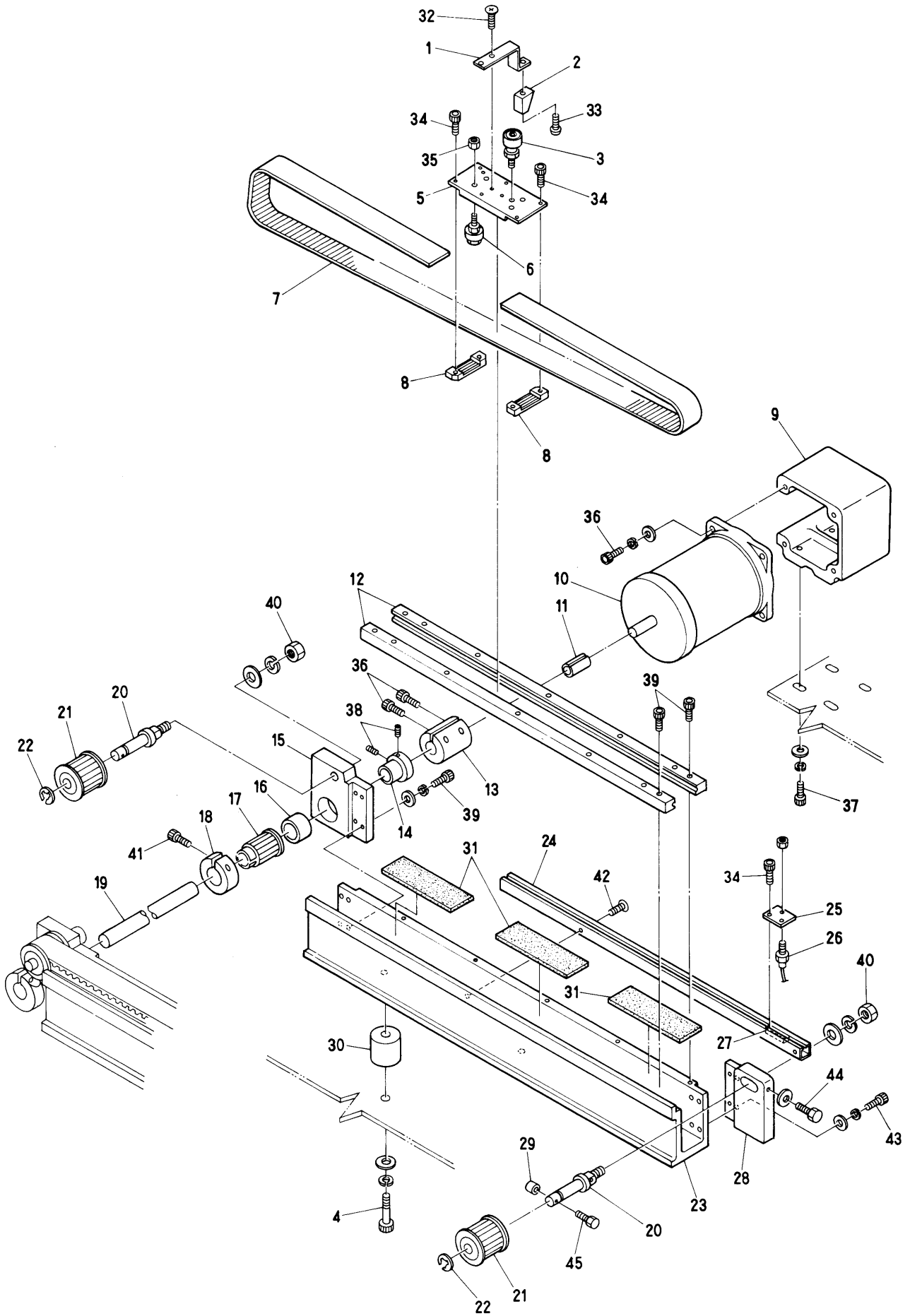




⑨ Drive mechanism

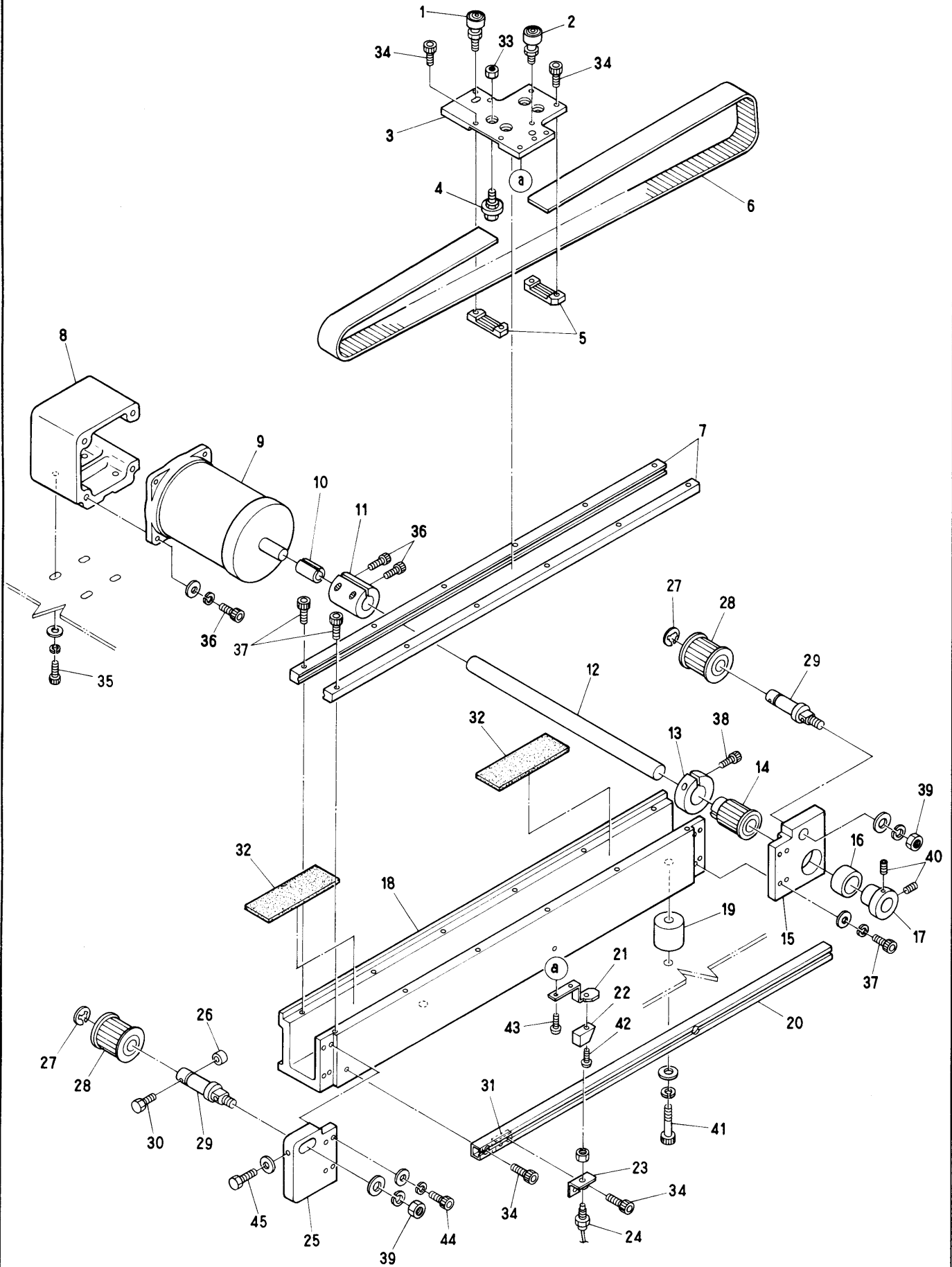
| ITEM | LIST No. | DESCRIPTION | Q'TY | REMARK |
|------|----------|-------------------------------------|------|--------|
| 1 | KU312730 | Timing pully (P78-5MII-20-6F) | 1 | |
| 2 | KU312761 | Driving shaft (PROFIT-802,BEAT-802) | 1 | |
| 3 | A9020118 | Timing belt 1165-5MII-20 (75233) | 1 | |
| 4 | KU312720 | Motor pully (P26-5MII-20-6F) | 1 | |
| 5 | MT314392 | Belt cover (BEAT-802) | 1 | |
| 6 | MT315260 | Belt cover bracket | 1 | |
| 7 | MT310010 | Pully cover (BEAT-802) | 1 | |
| 8 | MT314312 | Motor base (BEAT-802) | 1 | |
| 9 | MT310130 | DC Motor (DTM-5270C) | 1 | |
| 10 | MT314420 | Encorder collar | 1 | |
| 11 | MT314410 | Encorder shaft | 1 | |
| 12 | KC510240 | ML-27-6 Rateral coupling | 1 | |
| 13 | MT510210 | Position corder (LBJ-007-600) | 1 | |
| 14 | | Hex, nut M8 | | |
| 15 | | Hex, bolt M8×45 | | |
| 16 | | Hex, socket bolt M6×60 | | |
| 17 | | Hex, socket bolt M6×20 | | |
| 18 | | Hex, socket bolt M6×15 | | |
| 19 | | Truss screw M4×6 | | |
| 20 | | Hex, socket bolt M6×18 | | |
| 21 | | Hex, socket bolt M2×12 | | |
| 22 | | Hex, socket bolt M4×12 | | |
| 23 | KU315250 | Key (5×5×28.5) | 1 | |
| | | | | |
| | | | | |
| | | | | |
| | | | | |
| | | | | |
| | | | | |
| | | | | |
| | | | | |
| | | | | |
| | | | | |
| | | | | |
| | | | | |
| | | | | |
| | | | | |
| | | | | |
| | | | | |
| | | | | |
| | | | | |
| | | | | |
| | | | | |
| | | | | |
| | | | | |
| | | | | |
| | | | | |
| | | | | |
| | | | | |





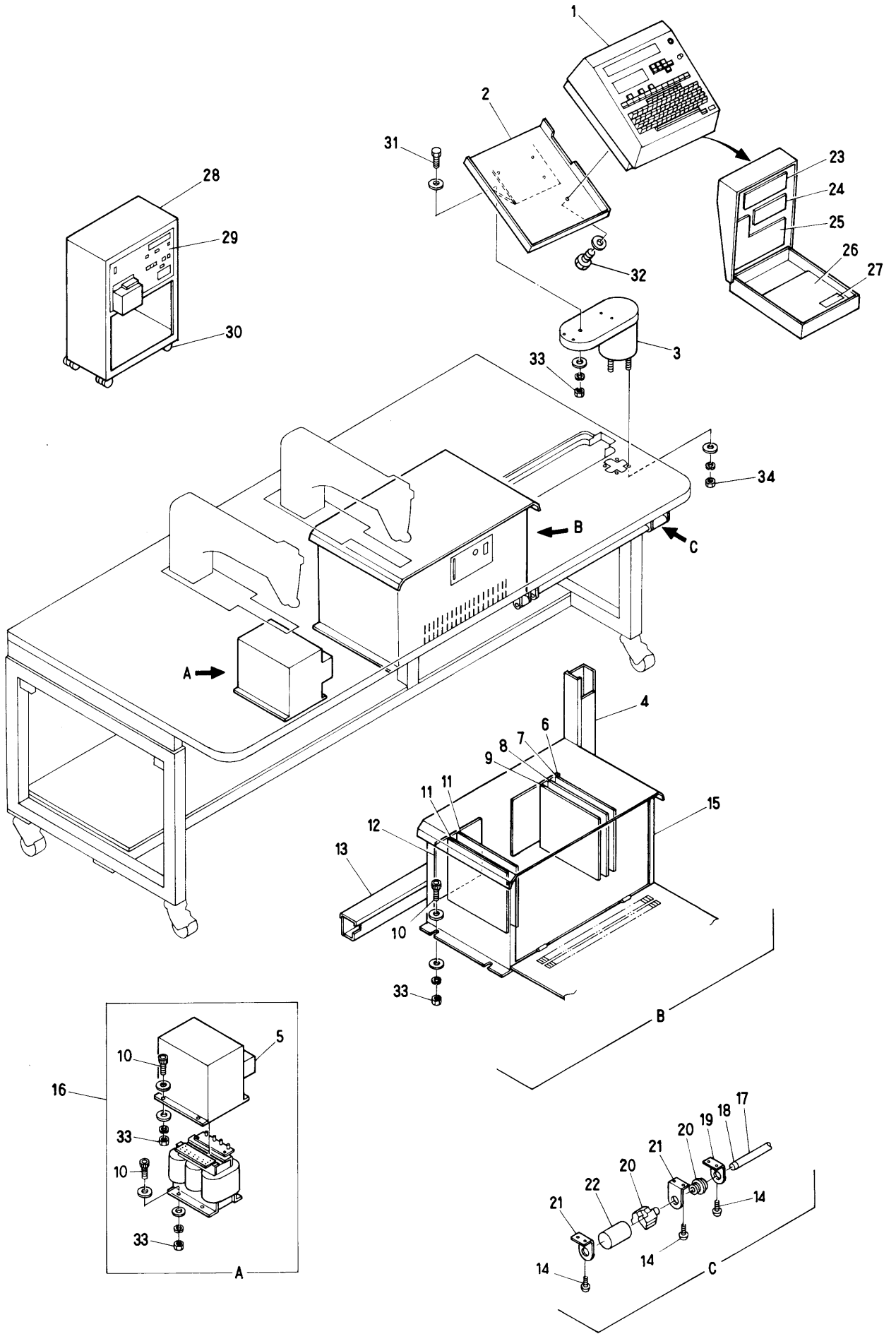
⑪ Pantograph drive mechanism (H-Direction) II

| ITEM | LIST No. | DESCRIPTION | Q'TY | REMARK |
|------|-----------------|--|------|--------|
| 1 | MT 4 6 0 2 5 2 | H-Pantograph origin point magnet bracket | 1 | |
| 2 | A 9 0 5 2 0 2 6 | Magnet M-102 | 1 | |
| 3 | HP 4 8 3 3 7 0 | Bearing shaft a'ssy | 2 | |
| 4 | | Hex, socket bolt M8×45 | | |
| 5 | MT 4 8 2 8 7 1 | H-Roller base (AT-802) | 2 | |
| 6 | HP 4 8 2 9 5 0 | Roller pin a'ssy A | 8 | |
| 7 | A 9 0 2 0 0 9 8 | Timing belt 300S5M2000 | 2 | |
| 8 | HP 4 8 2 9 4 0 | Timing belt rack (5M) | 4 | |
| 9 | MA 4 8 2 1 4 0 | Pulse moter bracket V | 1 | |
| 10 | MT 4 7 0 1 1 0 | Pulse moter (103-845-111) | 1 | |
| 11 | MT 4 8 3 3 6 0 | Pulse moter coupling bush | 1 | |
| 12 | HP 4 8 2 9 1 0 | V-Guide rail (L=1060) | 4 | |
| 13 | HH 4 8 1 9 3 1 | Pulse moter coupling | 1 | |
| 14 | HH 4 8 1 9 7 0 | Pulse moter connecting shaft collar | 1 | |
| 15 | WM 4 8 3 2 1 0 | H,V-Guide rear pulley bracket | 2 | |
| 16 | A 9 0 1 1 0 6 3 | Needle bearing TLA2016 | 2 | |
| 17 | HP 4 8 2 9 9 0 | Pantograph driving pulley (Rear) S5M | 2 | |
| 18 | HH 4 8 1 9 8 0 | Clamp collar φ19 | 2 | |
| 19 | | Connecting shaft (φ15) | 1 | |
| 20 | HH 4 8 1 9 9 1 | Timing pulley shaft | 4 | |
| 21 | HP 4 8 2 9 8 0 | Pantograph driving pulley (Front) S5M | 4 | |
| 22 | A 9 0 1 2 0 5 2 | E-Ring φ10 | 4 | |
| 23 | MT 4 8 3 1 4 1 | H-Guide rail base | 2 | |
| 24 | MT 4 6 0 2 8 1 | H-Pantograph origin point rail | 1 | |
| 25 | MT 4 6 0 2 3 0 | RS-001 Bracket (H) | 1 | |
| 26 | A 9 0 5 2 0 2 4 | Switch RS-001 | 1 | |
| 27 | KU 4 6 0 2 7 0 | Plate nut (M3) | 1 | |
| 28 | HH 4 8 2 0 0 0 | H-Guide front pulley bracket | 2 | |
| 29 | HH 4 8 2 1 1 0 | Pulley shaft bolt cap | 1 | |
| 30 | MA 4 8 0 4 9 0 | Guide rail base spacer | 4 | |
| 31 | KN 4 8 0 0 6 1 | Rail base felt SR100×38×6 | 6 | |
| 32 | | Flush screw M4×6 | | |
| 33 | | Truss screw M3×6 | | |
| 34 | | Hex, socket bolt M3×6 | | |
| 35 | | Hex, nut M5 | | |
| 36 | | Hex, socket bolt M5×18 | | |
| 37 | | Hex, socket bolt M6×20 | | |
| 38 | | Hex, socket set screw M5×8 | | |
| 39 | | Hex, socket bolt M4×15 | | |
| 40 | | Hex, nut M8 | | |
| 41 | | Hex, socket bolt M5×20 | | |
| 42 | | Flush screw M3×6 | | |
| 43 | | Hex, socket bolt M4×25 | | |
| 44 | | Hex, bolt M4×25 | | |
| 45 | | Hex, bolt M4×40 | | |



⑫ Pantograph drive mechanism (V-Direction) III

| ITEM | LIST No. | DESCRIPTION | Q'TY | REMARK |
|------|-----------------|--|------|--------|
| 1 | HP 4 8 3 1 1 1 | Bearing pin a'ssy B | 1 | |
| 2 | HP 4 8 3 3 7 0 | Bearing pin a'ssy | 1 | |
| 3 | KU 4 8 3 1 8 0 | V-Roller base (5M-30) | 1 | |
| 4 | HP 4 8 2 9 5 0 | Roller pin a'ssy A | 4 | |
| 5 | HP 4 8 2 9 4 0 | Timing belt rack (5M) | 2 | |
| 6 | A 9 0 2 0 0 9 8 | Timing belt 300S5M2000 | 1 | |
| 7 | HP 4 8 2 9 1 0 | V-Guide rail (L=1060) | 2 | |
| 8 | MA 4 8 2 1 4 0 | Pulse motor bracket V | 1 | |
| 9 | MT 4 7 0 1 1 0 | Pulse motor (103-845-1111) | 1 | |
| 1 0 | MT 4 8 3 3 6 0 | Pulse motor coupling bush | 1 | |
| 1 1 | HH 4 8 1 9 3 1 | Pulse motor coupling | 1 | |
| 1 2 | | Connecting shaft ($\phi 15$) | 1 | |
| 1 3 | HH 4 8 1 9 8 0 | Clamping collar $\phi 19$ | 1 | |
| 1 4 | HP 4 8 2 9 9 0 | Pantograph driving pulley (Rear) S5M | 1 | |
| 1 5 | WM 4 8 3 2 1 0 | H,V-Guide rear pulley bracket | 1 | |
| 1 6 | A 9 0 1 1 0 6 3 | Needle bearing TLA2016 | 1 | |
| 1 7 | HH 4 8 1 9 7 0 | Pulse motor connecting shaft collar | 1 | |
| 1 8 | MT 4 8 3 1 5 1 | V-Guide rail base (stroke 450) | 1 | |
| 1 9 | MA 4 8 0 4 9 0 | Guide rail base spacer | 2 | |
| 2 0 | MT 4 6 0 2 9 1 | V-Pantograph origin point rail | 1 | |
| 2 1 | MT 4 6 0 2 6 2 | V-Pantograph origin point magnet bracket | 1 | |
| 2 2 | A 9 0 5 2 0 2 6 | Magnet M-102 | 1 | |
| 2 3 | MT 4 6 0 2 4 0 | RS-001 Bracket (V) | 1 | |
| 2 4 | A 9 0 5 2 0 2 4 | Switch RS-001 | 1 | |
| 2 5 | HH 4 8 2 0 0 0 | H-Guide front pulley bracket | 1 | |
| 2 6 | HH 4 8 2 1 1 0 | Pulley shaft bolt cap | 1 | |
| 2 7 | A 9 0 1 2 0 5 2 | E-Ring ($\phi 10$) | 2 | |
| 2 8 | HP 4 8 2 9 8 0 | Pantograph driving pulley (Front) S5M | 2 | |
| 2 9 | HH 4 8 1 9 9 1 | Timing pulley shaft | 2 | |
| 3 0 | | Hex. bolt M4 \times 40 | | |
| 3 1 | KU 4 6 0 2 7 0 | Plate nut (M3) | 1 | |
| 3 2 | KN 4 8 0 0 6 1 | Rail base felt SR 100 \times 38 \times 6 | 2 | |
| 3 3 | | Hex. nut M5 | | |
| 3 4 | | Hex. socket bolt M3 \times 6 | | |
| 3 5 | | Hex. socket bolt M6 \times 25 | | |
| 3 6 | | Hex. socket bolt M5 \times 18 | | |
| 3 7 | | Hex. socket bolt M4 \times 15 | | |
| 3 8 | | Hex. socket bolt M5 \times 20 | | |
| 3 9 | | Hex. nut M8 | | |
| 4 0 | | Hex. socket set screw M5 \times 8 | | |
| 4 1 | | Hex. socket bolt M8 \times 45 | | |
| 4 2 | | Truss screw M3 \times 6 | | |
| 4 3 | | Truss screw M4 \times 8 | | |
| 4 4 | | Hex. socket bolt M4 \times 25 | | |
| 4 5 | | Hex. bolt M4 \times 25 | | |



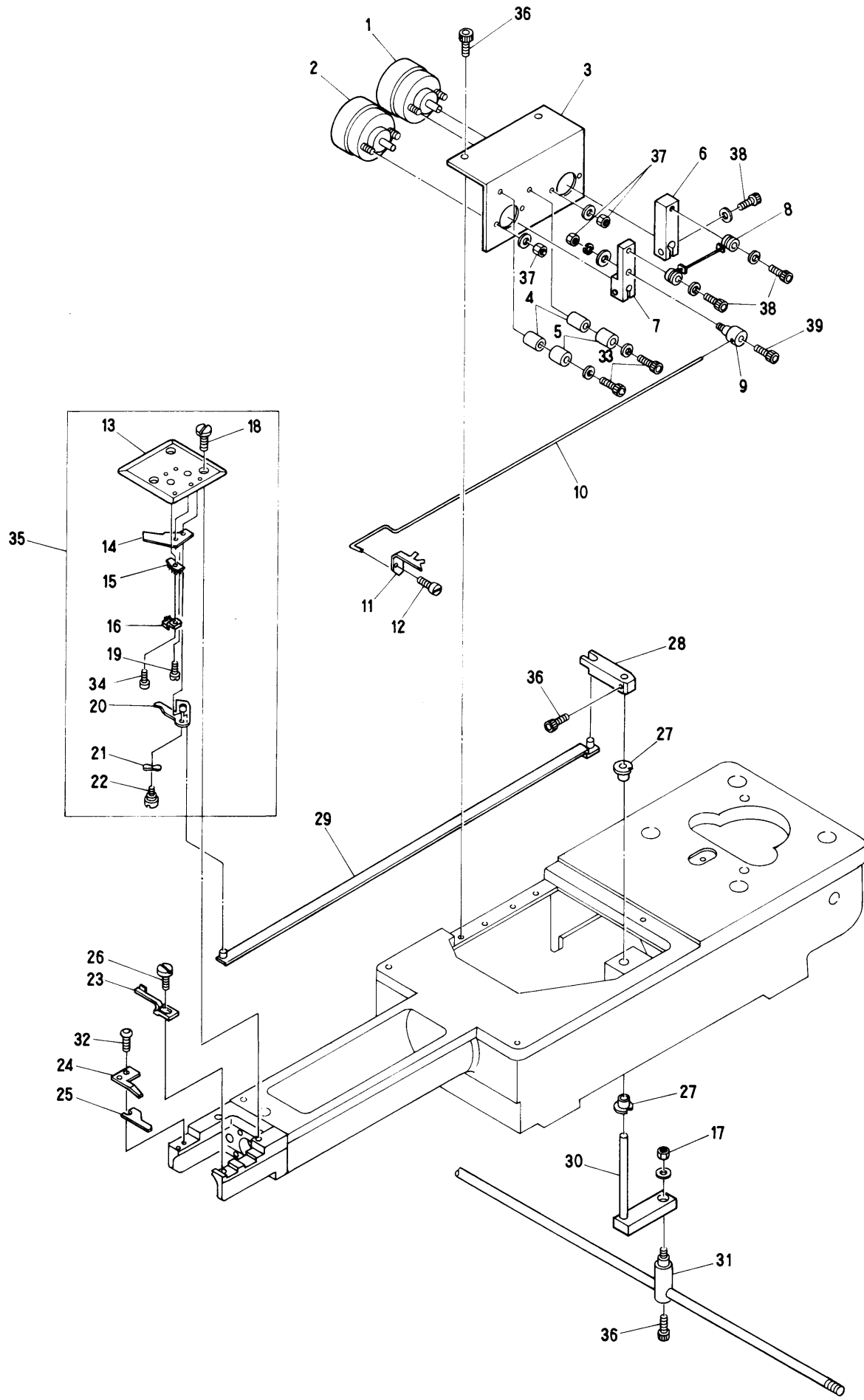
⑬ Control system (BEAT-802) I

| ITEM | LIST No. | DESCRIPTION | Q'TY | REMARK |
|------|----------|--|------|--------|
| 1 | EAN016A1 | SMT Controller | 1 | |
| 2 | MT511270 | SMT Controller fixing base | 1 | |
| 3 | MT511210 | Controller fixing pipe | 1 | |
| 4 | MT510622 | Cable duct No.1 | 1 | |
| 5 | FA911096 | BEAT Nofuse braker | 1 | |
| 6 | EBN00580 | SDU Control mother board (7020-2300) | 1 | |
| 7 | EBN00600 | SDU Memory mother board (7020-2500) | 1 | |
| 8 | EBN00620 | SDU Control board (7020-2100) | 1 | |
| 9 | EBN00630 | SDU Power board (7020-2200) | 1 | |
| 10 | | Hex. socket bolt M6×30 | | |
| 11 | EBN00640 | Stepping mother drive board (7020-2800) | 1 | |
| 12 | EBN00560 | SDU Driver mother board (7020-2700) | 2 | |
| 13 | MT510631 | Cable duct No.2 | 1 | |
| 14 | | Tapping screw M4×25 | 1 | |
| 15 | EAN016A2 | Driver SDU | 1 | |
| 16 | EAN019A3 | 802 Transformer (1P) | 1 | |
| 17 | KF530160 | Switch bar | 1 | |
| 18 | KF530170 | Switch bar cap | 2 | |
| 19 | KC530240 | Bar switch bracket (S. Cylinder) | 2 | |
| 20 | KF530110 | Push botton switch (Red) | 1 | |
| | KF530120 | Push botton switch (Green) | 1 | |
| 21 | KC530230 | Bar switch bracket (L. Cylinder) | 4 | |
| 22 | KF530150 | Push botton switch cap | 2 | |
| 23 | EBN00670 | FUTABA 1 line indicater pipe (M40SD02C) | 1 | |
| 24 | EBN00680 | FUTABA 2 line indicater pipe (M202SD03C) | 1 | |
| 25 | EBN00690 | SMT Keyboard (7020-7300) | 1 | |
| 26 | EBN00700 | SMT Control board (7020-7200) | 1 | |
| 27 | EBN00710 | SMT PSU board (7020-7210) | 1 | |
| 28 | MT520490 | FMC Box | 1 | |
| 29 | 9Z190022 | FMC 3.5 (With reader) | 1 | |
| 30 | A9012211 | Caster 56YN12S | 1 | |
| 31 | | Hex. bolt M6×15 | | |
| 32 | | Hex. bolt M4×15 | | |
| 33 | | Hex. nut M6 | | |
| 34 | | Hex. nut M8 | | |
| | | | | |
| | | | | |
| | | | | |
| | | | | |
| | | | | |
| | | | | |
| | | | | |
| | | | | |
| | | | | |
| | | | | |
| | | | | |

⑬ Control system (BEAT-M802) II

| ITEM | LIST No. | DESCRIPTION | Q'TY | REMARK |
|------|----------|--------------------------------------|------|--------|
| 1 | EAN017A0 | STX Controller | 1 | |
| 2 | MT511220 | STX Controller fixing base | 1 | |
| 3 | MT511210 | Controller fixing pipe | 1 | |
| 4 | MT510622 | Cable duct No.1 | 1 | |
| 5 | EBN01550 | M7000 3.5 inch FDD (7011-1138) | 2 | |
| 6 | EBN00580 | SDU Control mother board (7020-2300) | 1 | |
| 7 | EBN01430 | SDU Memory board (DAB-5) | 1 | |
| 8 | EBN00620 | SDU Control board (7020-2100) | 1 | |
| 9 | EBN00630 | SDU Power board (7020-2200) | 1 | |
| 10 | EBN01560 | M7000 HDD (7011-1139) | 1 | |
| 11 | EBN00640 | Stepping motor driver (7020-2800) | 2 | |
| 12 | EBN00560 | SDU Driver mother board (7020-2700) | 1 | |
| 13 | MT510631 | Cable duct No.2 | 1 | |
| 14 | EBN01540 | M7000 HDD Control board (7011-0019) | 1 | |
| 15 | EAN016A2 | Driver SDU | 1 | |
| 16 | EAN019A3 | 802 Transformer (1P) | 1 | |
| 17 | KF530160 | Bar switch | 1 | |
| 18 | KF530170 | Bar switch cap | 2 | |
| 19 | KC530240 | Bar switch bracket (S-Cylinder) | 5 | |
| 20 | KF530111 | Push button switch MS319 (Red) | 1 | |
| | KF530120 | Push button switch MS319 (Green) | 1 | |
| 21 | KC530230 | Bar switch bracket (L-Cylinder) | 4 | |
| 22 | KF530150 | Push button switch cap | 2 | |
| 23 | MT511240 | STX Controller fixing spacer | 1 | |
| 24 | EBN00720 | STX Mother board (7020-1300) | 1 | |
| 25 | EBN00680 | FUTABA 2 indicator (M202SD03C) | 1 | |
| 26 | EBN00730 | STX Control board (7020-1200) | 1 | |
| 27 | EBN00740 | STX Keyboard (7020-1400) | 1 | |
| 28 | EBN00760 | M7000 CPU board (7011-0014) | | |
| 29 | | Hex. nut M10 | | |
| 30 | | Hex. nut M8 | | |
| 31 | | Hex. socket bolt M6×30 | | |
| 32 | | Hex. nut M6 | | |
| 33 | | Tapping screw M4×20 | | |
| 34 | FA911096 | BEAT nofuse braker | 1 | |
| 35 | 90H00205 | BECS-89P 14 inch | 1 | |
| 36 | EAN038A0 | BEAT M7000 STX, SDU set | 1 | |
| 37 | FA911112 | M7000 BECS-P (MK-Mouse 3) | 1 | |
| 38 | EBN01510 | M7000 Keyboard unit (7011-4501) | 1 | |
| 39 | EBN00840 | Connector board (7011-4300) | 1 | |
| 40 | EBN00770 | M7000 Monitor I/F board (7011-0015) | 1 | |
| 41 | EBN00850 | M7000 Power source unit (7011-0013) | 1 | |
| 42 | EBN00950 | M7000 BECS Punching 186 NDP board | 1 | |
| 43 | EBN01530 | M7000 CG board (8211-7050) | 1 | |
| 44 | EBN00780 | M7000 HDD I/F board (7011-0016) | 1 | |

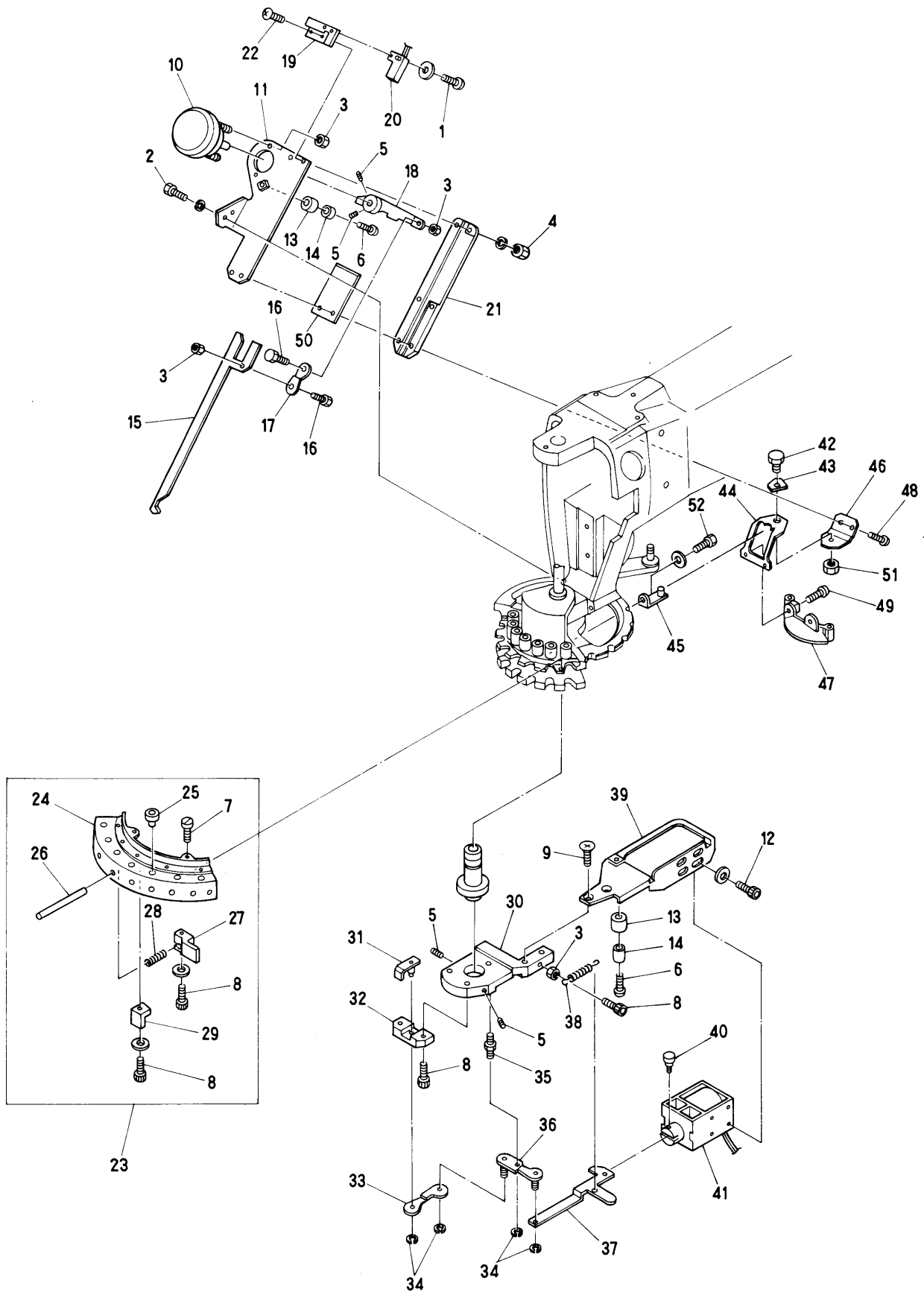




MODEL BEAT 802-YS
M802

⑭ Thread cutting mechanism I

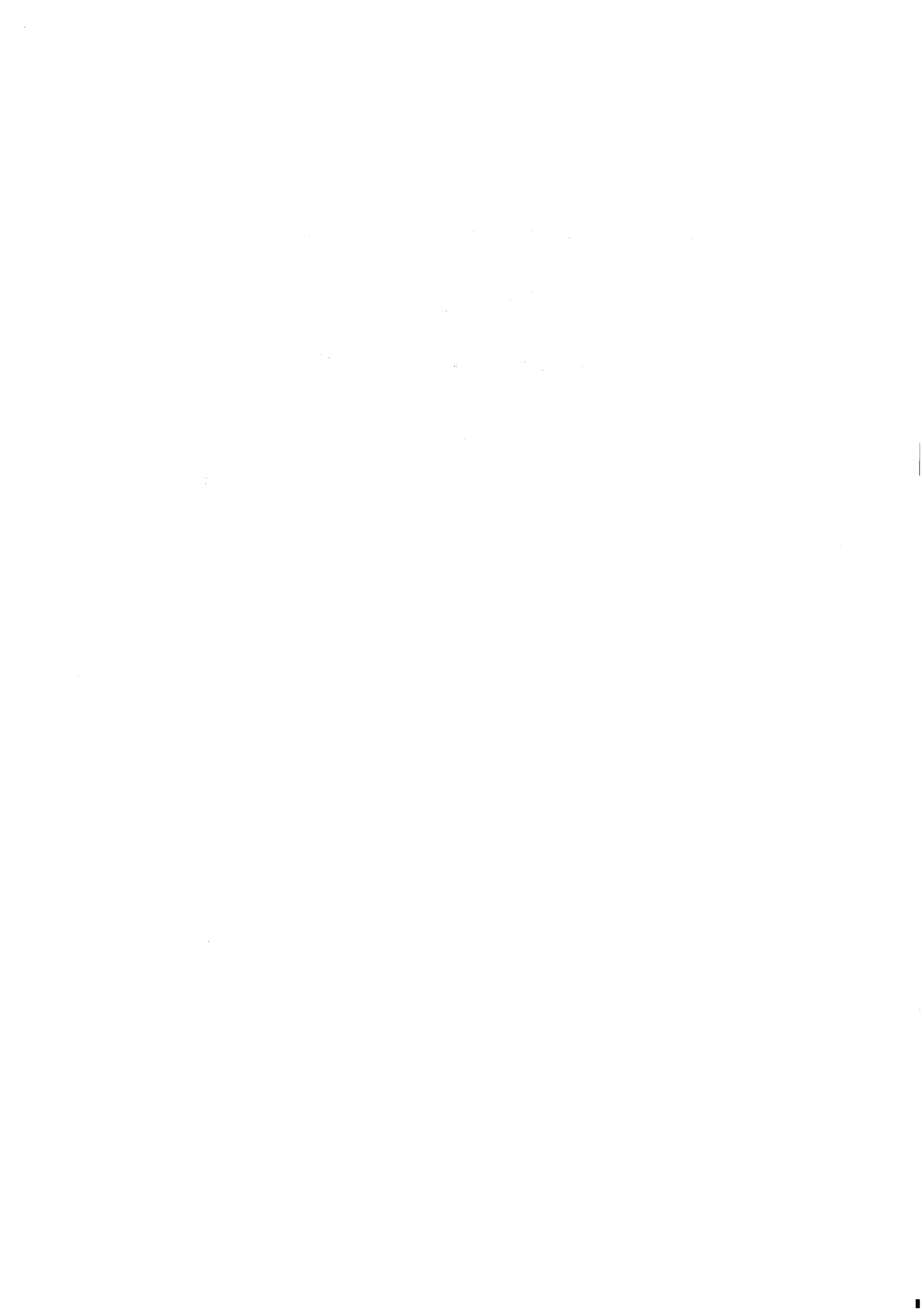
| ITEM | LIST No. | DESCRIPTION | Q'TY | REMARK |
|------|-----------------|---|------|--------|
| 1 | A 9 0 5 6 0 1 2 | Rotary solenoid (3EL25 33×3×8×9) | 1 | |
| 2 | A 9 0 5 6 0 0 8 | Rotary solenoid (3ER25 33×3×8×9) | 1 | |
| 3 | KC 2 7 1 9 6 0 | Solenoid stay | 1 | |
| 4 | KN 2 7 1 6 5 1 | Stopper eccentric | 2 | |
| 5 | KN 2 7 1 6 6 2 | Eccentric cover | 2 | |
| 6 | KC 2 7 1 9 5 0 | Solenoid lever B | 1 | |
| 7 | KC 2 7 1 9 4 0 | Solenoid lever A | 1 | |
| 8 | KL 2 7 0 3 6 0 | Drive rope | 1 | |
| 9 | KC 2 7 1 0 4 1 | Conecting clamp | 1 | |
| 1 0 | KC 2 7 1 0 3 1 | Hook drive rod | 1 | |
| 1 1 | KC 2 7 1 0 2 1 | Hook | 1 | |
| 1 2 | KC 2 7 1 0 0 0 | Upper thread cutter turning shaft | 1 | |
| 1 3 | KL 2 7 0 3 8 0 | Needle plate | 1 | |
| 1 4 | KC 2 7 0 9 6 0 | Fixed cutter | 1 | |
| 1 5 | KC 2 7 1 2 2 0 | Lower thread support stay (Upper) CMP | 1 | |
| 1 6 | KN 2 7 1 1 9 1 | Lower thread support stay (Lower) CMP | 1 | |
| 1 7 | | Hex, nut M4 | | |
| 1 8 | | Flush screw M3×3 | | |
| 1 9 | KC 2 7 0 9 8 0 | Fixed cutter set screw | 1 | |
| 2 0 | KC 2 7 0 9 5 0 | Lower thread cutter | 1 | |
| 2 1 | A 9 0 1 3 0 4 5 | Wave washer (WW5) | 1 | |
| 2 2 | KC 2 7 0 9 7 0 | Lower thread cutter turret shaft | 1 | |
| 2 3 | KC 2 2 0 6 4 1 | Bobbin case fixing plate | 1 | |
| 2 4 | KN 2 7 1 6 1 0 | Cutter fixing plate | 1 | |
| 2 5 | KN 2 7 1 6 0 2 | Upper thread cutter | 1 | |
| 2 6 | A 9 0 1 2 0 0 7 | Screw | 1 | |
| 2 7 | A 9 0 1 2 1 1 4 | DU bush (MB0505-10FDU) | 2 | |
| 2 8 | KC 2 7 1 1 2 0 | Lower thread cutter drive lever (Upper) | 1 | |
| 2 9 | KC 2 7 1 0 7 0 | Lower thread cutter drive rod | 1 | |
| 3 0 | KC 2 7 1 1 3 0 | Lower thread cutter drive lever (Lower) | 1 | |
| 3 1 | KF 2 3 0 6 4 0 | connecting bar clamp (BEAT-802, G1, G2) | 1 | |
| 3 2 | | Hex, socket botton bolt M3×6 | | |
| 3 3 | | Hex, socket bolt M4×18 | | |
| 3 4 | | Pan screw M3×3 | | |
| 3 5 | KL 2 7 0 3 9 0 | Needle plate a'ssy | 1 | |
| 3 6 | | Hex, socket bolt M4×8 | | |
| 3 7 | | Hex, nut M3 | | |
| 3 8 | | Hex, socket bolt M4×10 | | |
| 3 9 | | Hex, socket bolt M3×5 | | |
| | | | | |
| | | | | |
| | | | | |
| | | | | |
| | | | | |
| | | | | |
| | | | | |

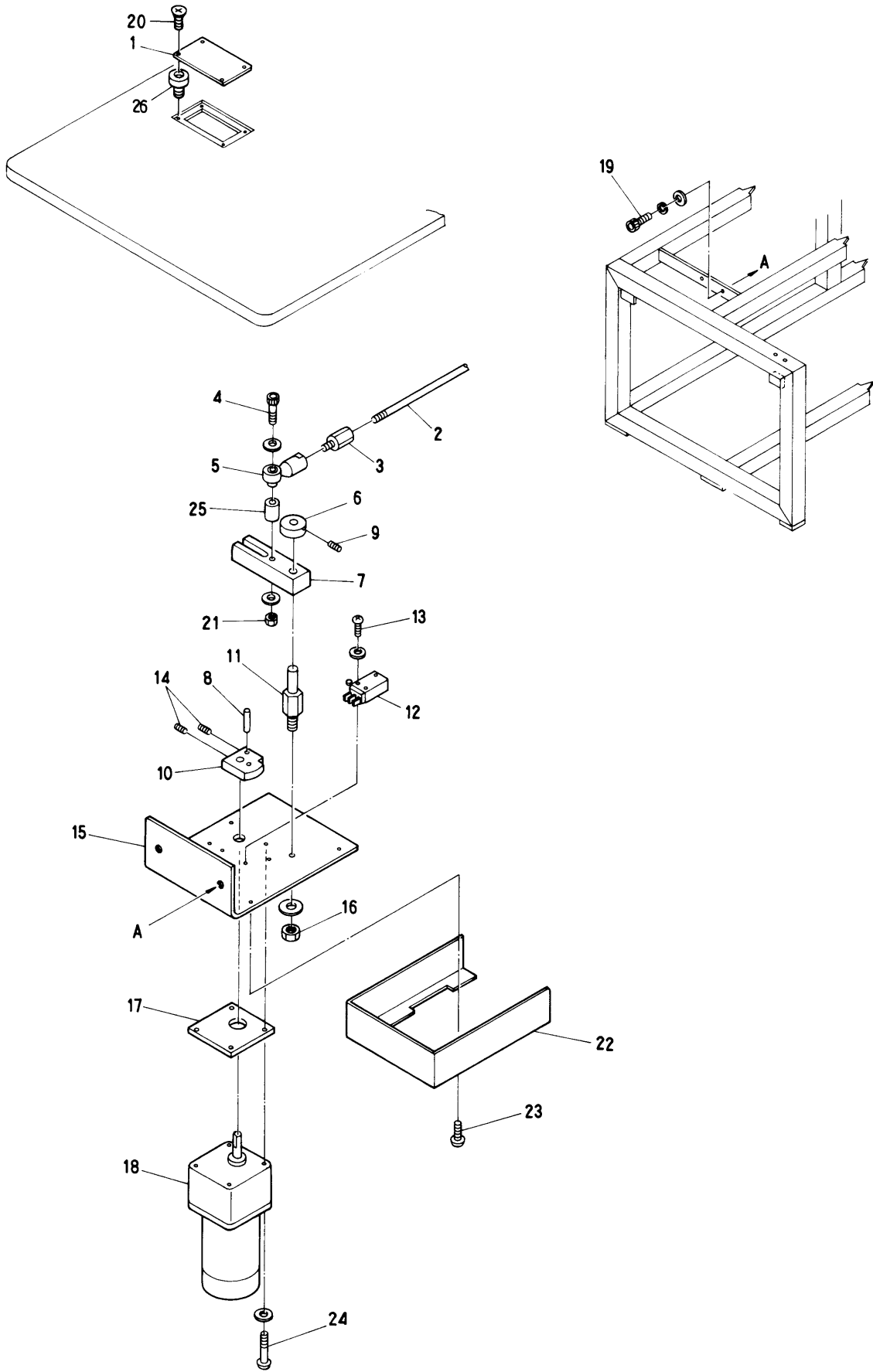


⑮ Thread cutting mechanism II

(N=Needle Q'ty)

| ITEM | LIST No. | DESCRIPTION | Q'TY | REMARK |
|------|-----------------|-----------------------------------|------|--------|
| 1 | | Truss screw M3×6 | | |
| 2 | | Hex. socket bolt M4×12 | | |
| 3 | | Hex. nut M4 | | |
| 4 | | Hex. nut M3 | | |
| 5 | | Hex. socket set screw M4×8 | | |
| 6 | | Truss screw M4×16 | | |
| 7 | | Set screw (SM9/64 40) | | |
| 8 | | Hex. socket bolt M4×10 | | |
| 9 | | Pan screw M4×8 | | |
| 10 | A 9 0 5 6 0 1 8 | Rotary solenoid (4ER67.5-34×8×9) | 1 | |
| 11 | KL 2 7 0 0 8 1 | Thread away base | 1 | |
| 12 | | Hex. socket bolt M3×6 | | |
| 13 | KL 2 7 0 1 5 0 | Eccentric cover | 2 | |
| 14 | KL 2 7 0 1 4 0 | Stopper eccentric | 2 | |
| 15 | KL 2 7 0 1 0 1 | Thread away hook | 1 | |
| 16 | KL 2 7 0 1 3 0 | Lever connecting pin | 2 | |
| 17 | KL 2 7 0 1 2 0 | Connecting plate | 1 | |
| 18 | KL 2 7 0 1 1 0 | Thread away solenoid lever | 1 | |
| 19 | KL 2 7 0 2 6 0 | Switch stay | 1 | |
| 20 | A 9 0 5 2 0 2 8 | Limit switch (RS-603) | 1 | |
| 21 | KL 2 7 0 0 9 1 | Thread away hook guide | 1 | |
| 22 | | Truss screw M3×10 | | |
| 23 | KC 2 7 0 7 6 1 | Thread support apron UF a'ssy (5) | 1 | |
| | KG 2 7 0 7 6 0 | Thread support apron US a'ssy (7) | 1 | |
| 24 | KC 2 7 0 2 8 3 | Thread support apron (5) | 1 | |
| | KG 2 7 0 2 8 2 | Thread support apron (7) | 1 | |
| 25 | KF 2 3 0 5 8 0 | Take up lever ceramic | N×1 | |
| 26 | KG 2 7 0 3 1 0 | Thread support pin | N×1 | |
| 27 | KC 2 7 0 3 0 1 | Thread support clamp | N×1 | |
| 28 | KC 2 7 0 2 7 1 | Support spring | N×1 | |
| 29 | KC 2 7 0 2 9 2 | Thread support block | N×1 | |
| 30 | KL 2 7 0 0 0 0 | Fixing base | 1 | |
| 31 | KL 2 7 0 0 2 0 | Thread support slider | 1 | |
| 32 | KL 2 7 0 0 1 0 | Slide base | 1 | |
| 33 | KL 2 7 0 0 3 0 | Driving plate | 1 | |
| 34 | A 9 0 1 2 0 5 6 | E-Ring φ3 | 4 | |
| 35 | KL 2 7 0 0 4 0 | Lever turret pin | 1 | |
| 36 | KL 2 7 0 0 5 0 | Solenoid lever | 1 | |
| 37 | KL 2 7 0 0 6 0 | Lever connecting plate | 1 | |
| 38 | KL 2 7 0 5 2 0 | Return spring | 1 | |
| 39 | KL 2 7 0 0 7 0 | Solenoid stay | 1 | |
| 40 | KC 2 7 0 1 0 1 | Solenoid pin | 1 | |
| 41 | A 9 0 5 6 0 1 3 | Keep solenoid (TDS-K10SL) | 1 | |
| 42 | KL 2 7 0 4 1 0 | Thread hanger plate rotary shaft | 1 | |
| 43 | A 9 0 1 3 0 4 5 | Wave washer (WW-5) | 1 | |





⑩ Thread cutting drive mechanism III

| ITEM | LIST No. | DESCRIPTION | Q'TY | REMARK |
|------|-----------------|---------------------------------------|------|--------|
| 1 | KC 2 7 1 4 4 0 | Drive service cover | 1 | |
| 2 | KC 3 3 0 4 1 0 | Look connecting rod | 1 | |
| 3 | KC 3 3 0 5 1 0 | Hex, connecting bar (L) | 1 | |
| 4 | | Hex, socket bolt M6×20 | | |
| 5 | A 9 0 1 2 0 0 2 | Uniball joint RB-6 (PR-6) | 1 | |
| 6 | KC 3 3 0 1 8 0 | Collar (φ10) | 1 | |
| 7 | KC 2 7 1 1 4 0 | Motor lever | 1 | |
| 8 | KN 2 7 2 3 5 0 | Drive pin | 1 | |
| 9 | | Hex, socket set screw M5×6 | | |
| 10 | KC 2 7 1 1 7 2 | Drive cam | 1 | |
| 11 | KC 2 7 1 1 5 1 | Motor lever turret shaft | 1 | |
| 12 | A 9 0 5 2 0 0 5 | Micro switch (V-0IGL2255) | 1 | |
| 13 | | Truss screw M3×15 M3×20 | | |
| 14 | | Hex, socket set screw M5×8 | | |
| 15 | KC 2 7 1 1 6 2 | Motor bracket | 1 | |
| 16 | | Hex, nut M8 | | |
| 17 | KC 2 7 1 4 3 0 | Motor specer | 1 | |
| 18 | A 9 0 6 5 0 2 6 | Reversible motor RM-H6A8PEAA(6RH-D36) | 1 | |
| 19 | | Hex, socket bolt M8×30 | | |
| 20 | | Screw M4×6 | | |
| 21 | | Hex, nut M6 | | |
| 22 | KN 2 7 1 7 1 2 | Motor bracket cover | 1 | |
| 23 | | Truss screw M3×6 | | |
| 24 | | Pan screw M5×65 | | |
| 25 | KN 2 7 1 8 0 0 | Drive lever collar | 1 | |
| 26 | | Nut (C) M4 | 4 | |
| | | | | |
| | | | | |
| | | | | |
| | | | | |
| | | | | |
| | | | | |
| | | | | |
| | | | | |
| | | | | |
| | | | | |
| | | | | |
| | | | | |
| | | | | |
| | | | | |
| | | | | |
| | | | | |
| | | | | |
| | | | | |
| | | | | |

I N D E X

| L I S T | No. | PAGE No. | ITEM | L I S T | No. | PAGE No. | ITEM |
|-----------------|-----|----------|------|-----------------|-----|----------|------|
| 1 P U 0 2 5 2 0 | | 1 8 | 1 6 | A 9 0 5 2 0 2 6 | | 2 4 | 2 |
| 9 0 H 0 0 2 0 5 | | 3 0 | 3 5 | A 9 0 5 2 0 2 6 | | 2 6 | 2 2 |
| 9 Z 1 9 0 0 2 2 | | 2 8 | 2 9 | A 9 0 5 2 0 2 8 | | 3 4 | 2 0 |
| A 9 0 1 0 0 1 7 | | 6 | 5 | A 9 0 5 6 0 0 7 | | 3 4 | 1 0 |
| A 9 0 1 0 0 1 7 | | 1 8 | 5 | A 9 0 5 6 0 0 8 | | 3 2 | 2 |
| A 9 0 1 1 0 2 1 | | 8 | 7 | A 9 0 5 6 0 1 2 | | 3 2 | 1 |
| A 9 0 1 1 0 2 1 | | 1 0 | 3 2 | A 9 0 5 6 0 1 3 | | 3 4 | 4 1 |
| A 9 0 1 1 0 2 2 | | 1 0 | 3 4 | A 9 0 5 6 0 2 0 | | 1 0 | 4 5 |
| A 9 0 1 1 0 2 3 | | 1 0 | 3 1 | A 9 0 6 5 0 2 6 | | 3 6 | 1 8 |
| A 9 0 1 1 0 6 3 | | 2 4 | 1 6 | E A N 0 1 6 A 1 | | 2 8 | 1 |
| A 9 0 1 1 0 6 3 | | 2 6 | 1 6 | E A N 0 1 6 A 2 | | 2 8 | 1 5 |
| A 9 0 1 1 1 1 5 | | 1 0 | 9 | E A N 0 1 6 A 2 | | 3 0 | 1 5 |
| A 9 0 1 1 1 5 2 | | 8 | 6 | E A N 0 1 7 A 0 | | 3 0 | 1 |
| A 9 0 1 2 0 0 1 | | 1 4 | 3 1 | E A N 0 1 9 A 3 | | 2 8 | 1 6 |
| A 9 0 1 2 0 0 2 | | 1 4 | 4 | E A N 0 1 9 A 3 | | 3 0 | 1 6 |
| A 9 0 1 2 0 0 2 | | 3 6 | 5 | E A N 0 3 8 A 0 | | 3 0 | 3 6 |
| A 9 0 1 2 0 0 3 | | 1 0 | 6 0 | E B N 0 0 1 8 0 | | 3 0 | 4 4 |
| A 9 0 1 2 0 0 5 | | 1 0 | 6 0 | E B N 0 0 5 6 0 | | 2 8 | 1 2 |
| A 9 0 1 2 0 0 7 | | 6 | 3 4 | E B N 0 0 5 6 0 | | 3 0 | 1 2 |
| A 9 0 1 2 0 0 7 | | 3 2 | 2 6 | E B N 0 0 5 8 0 | | 2 8 | 6 |
| A 9 0 1 2 0 2 7 | | 6 | 5 7 | E B N 0 0 5 8 0 | | 3 0 | 6 |
| A 9 0 1 2 0 3 2 | | 4 | 5 | E B N 0 0 6 0 0 | | 2 8 | 7 |
| A 9 0 1 2 0 5 1 | | 1 0 | 5 5 | E B N 0 0 6 2 0 | | 2 8 | 8 |
| A 9 0 1 2 0 5 2 | | 2 4 | 2 2 | E B N 0 0 6 2 0 | | 3 0 | 8 |
| A 9 0 1 2 0 5 2 | | 2 6 | 2 7 | E B N 0 0 6 3 0 | | 2 8 | 9 |
| A 9 0 1 2 0 5 3 | | 1 0 | 7 5 | E B N 0 0 6 3 0 | | 3 0 | 9 |
| A 9 0 1 2 0 5 6 | | 3 4 | 3 4 | E B N 0 0 6 4 0 | | 2 8 | 1 1 |
| A 9 0 1 2 1 1 4 | | 3 2 | 2 7 | E B N 0 0 6 4 0 | | 3 0 | 1 1 |
| A 9 0 1 2 1 1 6 | | 1 4 | 5 2 | E B N 0 0 6 5 0 | | 1 2 | 1 2 |
| A 9 0 1 2 1 6 4 | | 8 | 2 9 | E B N 0 0 6 6 0 | | 1 4 | 1 5 |
| A 9 0 1 2 1 9 0 | | 1 0 | 4 | E B N 0 0 6 7 0 | | 2 8 | 2 3 |
| A 9 0 1 2 2 0 8 | | 1 4 | 3 2 | E B N 0 0 6 8 0 | | 2 8 | 2 4 |
| A 9 0 1 2 2 1 1 | | 2 8 | 3 0 | E B N 0 0 6 8 0 | | 3 0 | 2 5 |
| A 9 0 1 2 2 1 6 | | 4 | 2 4 | E B N 0 0 6 9 0 | | 2 8 | 2 5 |
| A 9 0 1 2 2 9 1 | | 1 0 | 2 8 | E B N 0 0 7 0 0 | | 2 8 | 2 6 |
| A 9 0 1 3 0 4 5 | | 3 2 | 2 1 | E B N 0 0 7 1 0 | | 2 8 | 2 7 |
| A 9 0 1 3 0 4 5 | | 3 4 | 4 3 | E B N 0 0 7 2 0 | | 3 0 | 2 4 |
| A 9 0 1 4 0 5 1 | | 1 0 | 5 4 | E B N 0 0 7 3 0 | | 3 0 | 2 6 |
| A 9 0 1 4 0 6 3 | | 6 | 6 0 | E B N 0 0 7 4 0 | | 3 0 | 2 7 |
| A 9 0 2 0 0 9 8 | | 2 4 | 7 | E B N 0 0 7 6 0 | | 3 0 | 2 8 |
| A 9 0 2 0 0 9 8 | | 2 6 | 6 | E B N 0 0 7 7 0 | | 3 0 | 4 0 |
| A 9 0 2 0 1 1 8 | | 2 0 | 3 | E B N 0 0 8 4 0 | | 3 0 | 3 9 |
| A 9 0 5 2 0 0 5 | | 3 6 | 1 2 | E B N 0 0 8 5 0 | | 3 0 | 4 1 |
| A 9 0 5 2 0 2 4 | | 2 4 | 2 6 | E B N 0 0 9 3 0 | | 3 0 | 4 5 |
| A 9 0 5 2 0 2 4 | | 2 6 | 2 4 | E B N 0 0 9 5 0 | | 3 0 | 4 2 |

I N D E X

| L I S T | No. | PAGE No. | ITEM | L I S T | No. | PAGE No. | ITEM |
|-----------------|-----|----------|------|-----------------|-----|----------|------|
| E B N 0 1 1 0 0 | | 1 2 | 1 2 | H B 2 4 0 0 5 0 | | 1 0 | 4 8 |
| E B N 0 1 4 3 0 | | 3 0 | 7 | H B 2 4 0 0 7 0 | | 1 0 | 5 3 |
| E B N 0 1 5 1 0 | | 3 0 | 3 8 | H B 2 4 0 0 8 0 | | 1 0 | 5 8 |
| E B N 0 1 5 2 0 | | 3 0 | 4 6 | H B 2 4 0 0 9 0 | | 1 0 | 5 7 |
| E B N 0 1 5 3 0 | | 3 0 | 4 3 | H B 2 4 0 1 1 0 | | 1 0 | 5 2 |
| E B N 0 1 5 4 0 | | 3 0 | 1 4 | H B 2 4 0 1 7 1 | | 8 | 1 8 |
| E B N 0 1 5 5 0 | | 3 0 | 5 | H B 2 4 0 1 8 0 | | 8 | 2 |
| E B N 0 1 5 6 0 | | 3 0 | 1 0 | H B 2 4 0 2 6 0 | | 1 2 | 1 1 |
| F A 9 1 1 0 9 6 | | 2 8 | 5 | H B 2 4 0 2 7 0 | | 1 2 | 1 1 |
| F A 9 1 1 0 9 6 | | 3 0 | 3 4 | H B 2 4 0 2 8 0 | | 8 | 1 8 |
| F A 9 1 1 1 1 2 | | 3 0 | 3 7 | H B 2 4 0 2 9 0 | | 8 | 2 |
| H B 2 3 0 1 4 0 | | 1 0 | 3 3 | H B 2 4 0 3 1 0 | | 1 0 | 7 9 |
| H B 2 3 0 1 6 0 | | 8 | 2 0 | H B 2 4 0 3 3 0 | | 1 0 | 8 2 |
| H B 2 3 0 1 7 0 | | 1 0 | 1 3 | H B 2 4 0 3 4 0 | | 1 0 | 8 1 |
| H B 2 3 0 2 7 0 | | 8 | 2 1 | H H 3 3 0 2 8 1 | | 1 4 | 1 3 |
| H B 2 3 0 2 9 0 | | 8 | 4 | H H 4 8 1 9 3 1 | | 2 4 | 1 3 |
| H B 2 3 0 3 1 0 | | 8 | 1 5 | H H 4 8 1 9 3 1 | | 2 6 | 1 1 |
| H B 2 3 0 3 2 0 | | 8 | 1 1 | H H 4 8 1 9 7 0 | | 2 4 | 1 4 |
| H B 2 3 0 3 3 1 | | 8 | 1 2 | H H 4 8 1 9 7 0 | | 2 6 | 1 7 |
| H B 2 3 0 3 7 1 | | 1 0 | 1 0 | H H 4 8 1 9 8 0 | | 2 4 | 1 8 |
| H B 2 3 0 3 8 1 | | 1 0 | 5 | H H 4 8 1 9 8 0 | | 2 6 | 1 3 |
| H B 2 3 0 3 9 0 | | 1 0 | 3 | H H 4 8 1 9 9 1 | | 2 4 | 2 0 |
| H B 2 3 0 4 0 1 | | 1 0 | 1 | H H 4 8 1 9 9 1 | | 2 6 | 2 9 |
| H B 2 3 0 4 1 4 | | 1 0 | 1 2 | H H 4 8 2 0 0 0 | | 2 4 | 2 8 |
| H B 2 3 0 4 2 0 | | 1 0 | 1 1 | H H 4 8 2 0 0 0 | | 2 6 | 2 5 |
| H B 2 3 0 4 3 1 | | 1 0 | 3 0 | H H 4 8 2 1 1 0 | | 2 4 | 2 9 |
| H B 2 3 0 4 4 1 | | 1 0 | 3 0 | H H 4 8 2 1 1 0 | | 2 6 | 2 6 |
| H B 2 3 0 4 6 0 | | 1 0 | 4 2 | H P 2 3 1 3 9 0 | | 6 | 1 3 |
| H B 2 3 0 4 7 0 | | 1 0 | 4 3 | H P 2 4 1 1 1 2 | | 1 2 | 6 |
| H B 2 3 0 5 1 1 | | 1 0 | 1 7 | H P 2 4 1 1 2 2 | | 1 2 | 6 |
| H B 2 3 0 5 2 1 | | 1 0 | 1 6 | H P 2 4 1 1 5 0 | | 1 2 | 2 |
| H B 2 3 0 5 3 1 | | 1 0 | 1 5 | H P 2 4 1 1 6 0 | | 1 2 | 7 |
| H B 2 3 0 5 4 0 | | 1 0 | 1 8 | H P 2 4 1 1 7 0 | | 1 2 | 3 |
| H B 2 3 0 5 5 0 | | 1 0 | 2 9 | H P 2 4 1 1 8 0 | | 1 2 | 3 |
| H B 2 3 0 5 6 0 | | 1 0 | 7 2 | H P 2 4 1 3 7 1 | | 1 2 | 8 |
| H B 2 3 0 5 7 0 | | 1 0 | 8 4 | H P 2 4 1 3 8 1 | | 1 2 | 8 |
| H B 2 3 0 5 8 0 | | 1 0 | 7 7 | H P 2 4 1 4 0 0 | | 1 2 | 1 4 |
| H B 2 3 0 5 9 0 | | 1 0 | 2 | H P 2 4 1 4 1 0 | | 1 2 | 1 |
| H B 2 3 0 6 0 0 | | 1 0 | 8 3 | H P 2 4 1 4 3 0 | | 1 6 | 4 |
| H B 2 3 0 6 1 0 | | 1 0 | 8 3 | H P 2 4 1 4 5 0 | | 1 2 | 4 |
| H B 2 3 0 6 5 0 | | 8 | 3 5 | H P 2 4 1 4 6 0 | | 1 2 | 4 |
| H B 2 3 0 7 0 0 | | 1 0 | 8 0 | H P 2 4 1 4 7 0 | | 1 2 | 1 0 |
| H B 2 4 0 0 2 0 | | 1 0 | 5 0 | H P 2 4 1 4 8 0 | | 1 2 | 1 0 |
| H B 2 4 0 0 3 0 | | 1 0 | 5 1 | H P 2 5 0 0 5 0 | | 1 2 | 2 0 |
| H B 2 4 0 0 4 0 | | 1 0 | 4 9 | H P 3 2 1 1 4 0 | | 1 8 | 7 |

I N D E X

| L I S T No. | PAGE No. | ITEM | L I S T No. | PAGE No. | ITEM |
|----------------|----------|------|-----------------------|----------|------|
| HP 4 8 2 9 1 0 | 2 4 | 1 2 | K C 2 2 0 2 1 0 | 6 | 4 0 |
| HP 4 8 2 9 1 0 | 2 6 | 7 | K C 2 2 0 6 4 0 | 6 | 4 5 |
| HP 4 8 2 9 4 0 | 2 4 | 8 | K C 2 2 0 6 4 1 | 3 2 | 2 3 |
| HP 4 8 2 9 4 0 | 2 6 | 5 | K C 2 5 0 4 7 1 | 6 | 5 5 |
| HP 4 8 2 9 5 0 | 2 4 | 6 | K C 2 5 0 4 8 1 | 6 | 5 4 |
| HP 4 8 2 9 5 0 | 2 6 | 4 | K C 2 5 1 3 3 0 | 6 | 4 6 |
| HP 4 8 2 9 8 0 | 2 4 | 2 1 | K C 2 7 0 1 0 1 | 3 4 | 4 0 |
| HP 4 8 2 9 8 0 | 2 6 | 2 8 | K C 2 7 0 2 7 1 | 3 4 | 2 8 |
| HP 4 8 2 9 9 0 | 2 4 | 1 7 | K C 2 7 0 2 8 3 | 3 4 | 2 4 |
| HP 4 8 2 9 9 0 | 2 6 | 1 4 | K C 2 7 0 2 9 2 | 3 4 | 2 9 |
| HP 4 8 3 1 1 1 | 2 6 | 1 | K C 2 7 0 3 0 1 | 3 4 | 2 7 |
| HP 4 8 3 3 7 0 | 2 4 | 3 | K C 2 7 0 7 6 1 | 3 4 | 2 3 |
| HP 4 8 3 3 7 0 | 2 6 | 2 | K C 2 7 0 9 5 0 | 3 2 | 2 0 |
| HP 7 1 0 7 9 0 | 1 6 | 7 | K C 2 7 0 9 6 0 | 3 2 | 1 4 |
| KB 2 1 0 1 6 0 | 6 | 2 3 | K C 2 7 0 9 7 0 | 3 2 | 2 2 |
| KB 2 1 0 1 7 0 | 1 0 | 4 6 | K C 2 7 0 9 8 0 | 3 2 | 1 9 |
| KB 2 3 0 0 1 0 | 6 | 4 7 | K C 2 7 1 0 0 0 | 3 2 | 1 2 |
| KB 2 3 0 0 3 0 | 6 | 3 1 | K C 2 7 1 0 2 1 | 3 2 | 1 1 |
| KB 2 3 0 0 5 0 | 6 | 3 3 | K C 2 7 1 0 3 1 | 3 2 | 1 0 |
| KB 2 3 0 0 6 0 | 1 0 | 8 | K C 2 7 1 0 4 1 | 3 2 | 9 |
| KB 2 3 0 0 7 0 | 1 0 | 7 | K C 2 7 1 0 7 0 | 3 2 | 2 9 |
| KB 2 3 0 0 8 0 | 1 0 | 6 | K C 2 7 1 1 2 0 | 3 2 | 2 8 |
| KB 2 3 0 0 9 0 | 8 | 5 | K C 2 7 1 1 3 0 | 3 2 | 3 0 |
| KB 2 3 0 1 0 0 | 8 | 8 | K C 2 7 1 1 4 0 | 3 6 | 7 |
| KB 2 3 0 1 1 0 | 8 | 9 | K C 2 7 1 1 5 1 | 3 6 | 1 1 |
| KB 2 3 0 1 2 0 | 8 | 1 0 | K C 2 7 1 1 6 2 | 3 6 | 1 5 |
| KB 2 3 0 1 3 0 | 8 | 1 9 | K C 2 7 1 1 7 2 | 3 6 | 1 0 |
| KB 2 3 0 1 4 0 | 8 | 1 7 | K C 2 7 1 4 3 0 | 3 6 | 1 7 |
| KB 2 3 0 1 5 0 | 8 | 1 6 | K C 2 7 1 4 4 0 | 3 6 | 1 |
| KB 2 3 0 1 6 1 | 8 | 1 | K C 2 7 1 9 4 0 | 3 2 | 7 |
| KB 2 3 0 1 7 0 | 1 0 | 4 4 | K C 2 7 1 9 5 0 | 3 2 | 6 |
| KB 2 3 0 3 1 0 | 8 | 3 6 | K C 2 7 1 9 6 0 | 3 2 | 3 |
| KB 2 4 0 0 1 0 | 8 | 1 4 | K C 3 2 0 5 9 0 | 1 8 | 1 |
| KB 2 4 0 0 2 0 | 8 | 3 | K C 3 3 0 1 3 0 | 1 4 | 1 6 |
| KB 2 4 0 0 3 0 | 1 0 | 4 7 | K C 3 3 0 1 6 1 | 1 4 | 2 1 |
| KB 2 4 0 0 4 0 | 1 0 | 5 6 | K C 3 3 0 1 7 0 | 1 4 | 1 4 |
| KB 2 4 0 0 5 1 | 1 2 | 1 3 | K C 3 3 0 1 8 0 | 1 4 | 2 2 |
| KB 2 4 0 0 6 0 | 1 2 | 1 6 | K C 3 3 0 1 8 0 | 3 6 | 6 |
| KB 2 4 0 0 7 0 | 1 2 | 1 6 | K C 3 3 0 1 9 0 | 1 4 | 2 0 |
| KB 2 4 0 1 0 0 | 1 2 | 1 5 | K C 3 3 0 2 1 0 | 1 4 | 1 8 |
| KB 2 5 0 0 2 0 | 1 2 | 1 7 | K C 3 3 0 2 3 0 | 1 4 | 7 |
| KB 2 5 0 0 3 0 | 1 2 | 1 8 | K C 3 3 0 2 6 0 | 1 4 | 1 |
| KB 2 5 0 0 4 0 | 1 2 | 1 9 | K C 3 3 0 2 9 0 | 1 4 | 6 |
| KB 2 5 0 0 5 0 | 1 2 | 2 1 | K C 3 3 0 3 1 0 3 8 0 | 1 0 | 5 9 |
| KB 2 5 0 0 6 0 | 1 2 | 2 2 | K C 3 3 0 4 1 0 | 1 0 | 4 1 |

I N D E X

| L I S T | No. | PAGE No. | ITEM | L I S T | No. | PAGE No. | ITEM |
|-----------------|-----|----------|------|-----------------|-----|----------|------|
| K C 3 3 0 4 1 0 | | 3 6 | 2 | K F 5 3 0 1 1 1 | | 3 0 | 2 0 |
| K C 3 3 0 5 1 0 | | 1 4 | 3 | K F 5 3 0 1 2 0 | | 2 8 | 2 0 |
| K C 3 3 0 5 1 0 | | 3 6 | 3 | K F 5 3 0 1 2 0 | | 3 0 | 2 0 |
| K C 3 3 0 6 1 0 | | 1 4 | 2 7 | K F 5 3 0 1 5 0 | | 2 8 | 2 2 |
| K C 3 3 0 8 1 0 | | 1 4 | 2 8 | K F 5 3 0 1 5 0 | | 3 0 | 2 2 |
| K C 3 3 0 8 5 0 | | 1 4 | 2 | K F 5 3 0 1 6 0 | | 2 8 | 1 7 |
| K C 4 8 0 3 5 0 | | 2 2 | 3 | K F 5 3 0 1 6 0 | | 3 0 | 1 7 |
| K C 5 1 0 2 4 0 | | 2 0 | 1 2 | K F 5 3 0 1 7 0 | | 2 8 | 1 8 |
| K C 5 3 0 2 3 0 | | 2 8 | 2 1 | K F 5 3 0 1 7 0 | | 3 0 | 1 8 |
| K C 5 3 0 2 3 0 | | 3 0 | 2 1 | K F 5 4 0 3 5 0 | | 1 8 | 9 |
| K C 5 3 0 2 4 0 | | 2 8 | 1 9 | K F 7 1 0 2 8 0 | | 1 6 | 6 |
| K C 5 3 0 2 4 0 | | 3 0 | 1 9 | K G 2 3 0 0 2 0 | | 1 0 | 1 9 |
| K E 3 3 0 9 8 0 | | 1 4 | 1 7 | K G 2 3 0 6 1 0 | | 1 4 | 1 0 |
| K F 2 2 0 1 3 0 | | 6 | 1 1 | K G 2 4 1 0 2 0 | | 1 2 | 5 |
| K F 2 2 0 2 3 0 | | 6 | 4 4 | K G 2 5 0 0 1 0 | | 1 2 | 2 0 |
| K F 2 2 0 2 7 0 | | 6 | 2 7 | K G 2 7 0 2 8 2 | | 3 4 | 2 4 |
| K F 2 2 0 2 9 0 | | 6 | 3 7 | K G 2 7 0 3 1 0 | | 3 4 | 2 6 |
| K F 2 2 0 4 1 0 | | 6 | 5 1 | K G 2 7 0 7 6 0 | | 3 4 | 2 3 |
| K F 2 2 0 4 4 0 | | 6 | 5 2 | K G 3 3 0 1 5 0 | | 1 4 | 2 3 |
| K F 2 2 0 4 6 0 | | 6 | 1 9 | K G 3 3 0 2 2 0 | | 1 4 | 2 4 |
| K F 2 2 0 4 7 0 | | 6 | 2 6 | K G 7 1 1 1 7 0 | | 1 6 | 3 |
| K F 2 2 0 4 8 0 | | 6 | 3 5 | K L 2 1 0 1 1 3 | | 6 | 3 |
| K F 2 2 0 7 8 0 | | 6 | 4 9 | K L 2 1 0 1 4 0 | | 6 | 1 7 |
| K F 2 3 0 2 1 0 | | 1 0 | 2 7 | K L 2 2 0 0 0 0 | | 6 | 1 6 |
| K F 2 3 0 2 3 0 | | 1 0 | 2 2 | K L 2 2 0 0 1 0 | | 6 | 2 4 |
| K F 2 3 0 2 4 0 | | 1 0 | 2 3 | K L 2 2 0 0 2 0 | | 6 | 2 9 |
| K F 2 3 0 2 5 0 | | 1 0 | 2 4 | K L 2 2 0 0 3 0 | | 6 | 1 5 |
| K F 2 3 0 3 6 0 | | 1 4 | 2 5 | K L 2 2 0 0 4 0 | | 6 | 6 |
| K F 2 3 0 4 2 0 | | 6 | 3 0 | K L 2 2 0 0 5 0 | | 6 | 2 1 |
| K F 2 3 0 5 0 0 | | 8 | 1 3 | K L 2 2 0 0 6 0 | | 6 | 2 5 |
| K F 2 3 0 5 8 0 | | 8 | 2 2 | K L 2 2 0 0 7 0 | | 6 | 3 6 |
| K F 2 3 0 5 8 0 | | 3 4 | 2 5 | K L 2 2 0 0 8 0 | | 6 | 1 2 |
| K F 2 3 0 6 3 0 | | 1 0 | 3 8 | K L 2 2 0 0 9 0 | | 6 | 4 |
| K F 2 3 0 6 3 0 | | 1 4 | 1 1 | K L 2 2 0 1 0 0 | | 6 | 1 |
| K F 2 3 0 6 4 0 | | 1 0 | 3 9 | K L 2 2 0 1 2 0 | | 6 | 4 1 |
| K F 2 3 0 6 5 0 | | 1 0 | 3 7 | K L 2 2 0 1 3 0 | | 6 | 1 4 |
| K F 2 3 0 6 6 1 | | 1 0 | 3 6 | K L 2 2 0 1 4 0 | | 6 | 2 0 |
| K F 2 3 0 6 7 0 | | 1 0 | 3 5 | K L 2 2 0 1 5 0 | | 6 | 8 |
| K F 2 3 0 9 1 0 | | 1 0 | 2 0 | K L 2 3 0 1 1 0 | | 1 0 | 2 5 |
| K F 2 3 0 9 2 0 | | 1 0 | 2 6 | K L 2 3 0 2 8 0 | | 1 0 | 6 9 |
| K F 2 3 0 9 3 0 | | 1 0 | 2 1 | K L 2 5 0 0 4 0 | | 6 | 7 |
| K F 2 4 0 9 0 0 | | 1 6 | 5 | K L 2 5 0 0 5 1 | | 6 | 5 9 |
| K F 2 5 0 9 0 0 | | 6 | 4 2 | K L 2 5 0 0 7 0 | | 6 | 5 6 |
| K F 3 3 0 3 8 1 | | 1 0 | 4 0 | K L 2 7 0 0 0 0 | | 3 4 | 3 0 |
| K F 5 3 0 1 1 1 | | 2 8 | 2 0 | K L 2 7 0 0 1 0 | | 3 4 | 3 2 |

I N D E X

| L I S T | No. | PAGE No. | ITEM | L I S T | No. | PAGE No. | ITEM |
|----------------|-----|----------|------|--------------------------|-----|----------|------|
| KL 2 7 0 0 2 0 | | 3 4 | 3 1 | KU 2 7 0 0 1 0 | | 3 2 | 3 1 |
| KL 2 7 0 0 3 0 | | 3 4 | 3 3 | KU 3 1 0 1 6 1 | | 1 8 | 1 0 |
| KL 2 7 0 0 4 0 | | 3 4 | 3 5 | KU 3 1 2 7 2 0 | | 2 0 | 4 |
| KL 2 7 0 0 5 0 | | 3 4 | 3 6 | KU 3 1 2 7 3 0 | | 2 0 | 1 |
| KL 2 7 0 0 6 0 | | 3 4 | 3 7 | KU 3 1 2 7 6 1 | | 2 0 | 2 |
| KL 2 7 0 0 7 0 | | 3 4 | 3 9 | KU 3 1 5 2 5 0 | | 2 0 | 2 3 |
| KL 2 7 0 0 8 1 | | 3 4 | 1 1 | KU 4 6 0 2 7 0 | | 2 4 | 2 7 |
| KL 2 7 0 0 9 1 | | 3 4 | 2 1 | KU 4 6 0 2 7 0 | | 2 6 | 3 1 |
| KL 2 7 0 1 0 1 | | 3 4 | 1 5 | KU 4 8 3 1 8 0 | | 2 6 | 3 |
| KL 2 7 0 1 1 0 | | 3 4 | 1 8 | KU 5 1 0 7 6 1 0 2 5 2 0 | | 1 6 | 1 |
| KL 2 7 0 1 2 0 | | 3 4 | 1 7 | KU 5 1 0 8 7 1 0 2 5 2 0 | | 1 6 | 1 |
| KL 2 7 0 1 3 0 | | 3 4 | 1 6 | KU 7 1 1 1 7 0 | | 1 6 | 3 |
| KL 2 7 0 1 4 0 | | 3 4 | 1 4 | MA 1 4 0 3 1 0 | | 4 | 3 |
| KL 2 7 0 1 5 0 | | 3 4 | 1 3 | MA 1 4 0 3 2 0 | | 4 | 4 |
| KL 2 7 0 2 6 0 | | 3 4 | 1 9 | MA 1 4 0 3 8 0 | | 4 | 6 |
| KL 2 7 0 3 6 0 | | 3 2 | 8 | MA 1 4 0 6 2 0 | | 4 | 7 |
| KL 2 7 0 3 8 0 | | 3 2 | 1 3 | MA 1 5 1 5 0 0 | | 4 | 2 |
| KL 2 7 0 3 9 0 | | 3 2 | 3 5 | MA 2 1 0 2 1 0 | | 6 | 2 8 |
| KL 2 7 0 4 0 0 | | 3 4 | 4 7 | MA 2 5 0 1 3 1 | | 6 | 4 3 |
| KL 2 7 0 4 1 0 | | 3 4 | 4 2 | MA 3 3 0 7 0 0 | | 1 4 | 1 9 |
| KL 2 7 0 4 2 0 | | 3 4 | 4 5 | MA 4 8 0 4 9 0 | | 2 4 | 3 0 |
| KL 2 7 0 4 3 0 | | 3 4 | 4 4 | MA 4 8 0 4 9 0 | | 2 6 | 1 9 |
| KL 2 7 0 4 4 0 | | 3 4 | 4 6 | MA 4 8 2 1 4 0 | | 2 2 | 8 |
| KL 2 7 0 4 5 0 | | 3 4 | 5 0 | MA 4 8 2 1 4 0 | | 2 4 | 9 |
| KL 2 7 0 5 2 0 | | 3 4 | 3 8 | MA 4 8 2 1 4 0 | | 2 6 | 8 |
| KL 3 2 0 0 0 0 | | 1 8 | 6 | MT 1 1 1 0 8 4 | | 4 | 2 3 |
| KL 3 2 0 0 2 0 | | 1 8 | 3 | MT 1 1 1 0 9 1 | | 4 | 2 0 |
| KL 3 3 0 0 4 0 | | 1 4 | 2 6 | MT 1 1 1 1 0 0 | | 4 | 1 6 |
| KL 3 3 0 0 5 0 | | 1 4 | 3 0 | MT 1 1 1 1 1 1 | | 4 | 1 1 |
| KN 2 3 1 3 5 0 | | 1 0 | 1 4 | MT 1 1 1 1 2 1 | | 4 | 1 2 |
| KN 2 7 1 1 9 1 | | 3 2 | 1 6 | MT 1 1 1 1 3 0 | | 4 | 2 2 |
| KN 2 7 1 2 2 0 | | 3 2 | 1 5 | MT 1 1 1 1 4 0 | | 4 | 2 1 |
| KN 2 7 1 6 0 2 | | 3 2 | 2 5 | MT 1 1 1 1 5 0 | | 4 | 1 3 |
| KN 2 7 1 6 1 0 | | 3 2 | 2 4 | MT 1 1 1 1 6 0 | | 4 | 1 5 |
| KN 2 7 1 6 5 1 | | 3 2 | 4 | MT 1 1 1 1 7 0 | | 4 | 1 4 |
| KN 2 7 1 6 6 2 | | 3 2 | 5 | MT 1 1 1 1 8 2 | | 4 | 1 0 |
| KN 2 7 1 7 1 2 | | 3 6 | 2 2 | MT 1 2 0 1 8 3 | | 4 | 1 |
| KN 2 7 1 8 0 0 | | 3 6 | 2 5 | MT 1 2 0 8 1 1 | | 4 | 1 7 |
| KN 2 7 2 3 5 0 | | 3 6 | 8 | MT 1 2 0 8 2 1 | | 4 | 1 9 |
| KN 3 3 0 2 4 0 | | 1 4 | 5 | MT 1 2 0 8 3 1 | | 4 | 1 8 |
| KN 3 3 0 2 5 0 | | 1 4 | 8 | MT 1 2 0 8 4 1 | | 4 | 9 |
| KN 4 8 0 0 6 1 | | 2 4 | 3 1 | MT 1 2 0 9 6 1 | | 4 | 2 5 |
| KN 4 8 0 0 6 1 | | 2 6 | 3 2 | MT 1 3 0 3 3 0 | | 4 | 8 |
| KN 4 8 0 4 0 0 | | 2 2 | 2 | MT 1 5 0 0 0 2 | | 4 | 2 6 |
| KU 2 4 1 4 0 0 | | 1 2 | 1 4 | MT 3 1 0 0 1 0 | | 2 0 | 7 |

I N D E X

| L I S T No. | PAGE No. | ITEM | L I S T No. | PAGE No. | ITEM |
|----------------|----------|------|----------------|----------|------|
| MT 3 1 0 1 3 0 | 2 0 | 9 | WW 3 1 0 3 1 0 | 1 8 | 1 4 |
| MT 3 1 4 3 1 2 | 2 0 | 8 | | | |
| MT 3 1 4 3 9 2 | 2 0 | 5 | | | |
| MT 3 1 4 4 1 0 | 2 0 | 1 1 | | | |
| MT 3 1 4 4 2 0 | 2 0 | 1 0 | | | |
| MT 3 1 5 2 6 0 | 2 0 | 6 | | | |
| MT 3 3 0 6 9 0 | 1 4 | 9 | | | |
| MT 3 3 0 7 9 0 | 1 4 | 2 9 | | | |
| MT 3 3 0 8 0 1 | 1 4 | 1 2 | | | |
| MT 4 5 0 0 0 0 | 2 2 | 1 | | | |
| MT 4 5 0 9 2 0 | 2 2 | 4 | | | |
| MT 4 6 0 2 3 0 | 2 4 | 2 5 | | | |
| MT 4 6 0 2 4 0 | 2 6 | 2 3 | | | |
| MT 4 6 0 2 5 2 | 2 4 | 1 | | | |
| MT 4 6 0 2 6 2 | 2 6 | 2 1 | | | |
| MT 4 6 0 2 8 1 | 2 4 | 2 4 | | | |
| MT 4 6 0 2 9 1 | 2 6 | 2 0 | | | |
| MT 4 7 0 1 1 0 | 2 2 | 9 | | | |
| MT 4 7 0 1 1 0 | 2 4 | 1 0 | | | |
| MT 4 7 0 1 1 0 | 2 6 | 9 | | | |
| MT 4 8 0 1 4 0 | 2 2 | 5 | | | |
| MT 4 8 0 1 5 0 | 2 2 | 7 | | | |
| MT 4 8 0 1 8 0 | 2 2 | 6 | | | |
| MT 4 8 2 8 7 1 | 2 4 | 5 | | | |
| MT 4 8 3 1 4 1 | 2 4 | 2 3 | | | |
| MT 4 8 3 1 5 1 | 2 6 | 1 8 | | | |
| MT 4 8 3 3 6 0 | 2 4 | 1 1 | | | |
| MT 4 8 3 3 6 0 | 2 6 | 1 0 | | | |
| MT 5 1 0 2 1 0 | 2 0 | 1 3 | | | |
| MT 5 1 0 6 2 2 | 2 8 | 4 | | | |
| MT 5 1 0 6 2 2 | 3 0 | 4 | | | |
| MT 5 1 0 6 3 1 | 2 8 | 1 3 | | | |
| MT 5 1 0 6 3 1 | 3 0 | 1 3 | | | |
| MT 5 1 0 6 7 1 | 1 6 | 1 0 | | | |
| MT 5 1 0 6 8 1 | 1 6 | 8 | | | |
| MT 5 1 0 7 9 1 | 1 6 | 9 | | | |
| MT 5 1 1 2 1 0 | 2 8 | 3 | | | |
| MT 5 1 1 2 1 0 | 3 0 | 3 | | | |
| MT 5 1 1 2 2 0 | 3 0 | 2 | | | |
| MT 5 1 1 2 4 0 | 3 0 | 2 3 | | | |
| MT 5 1 1 2 7 0 | 2 8 | 2 | | | |
| MT 5 2 0 4 9 0 | 2 8 | 2 8 | | | |
| WM 4 8 3 2 1 0 | 2 4 | 1 5 | | | |
| WM 4 8 3 2 1 0 | 2 6 | 1 5 | | | |
| WW 3 1 0 3 0 0 | 1 8 | 1 2 | | | |

