

【CBⅢ Specialized assembly method for Cart】

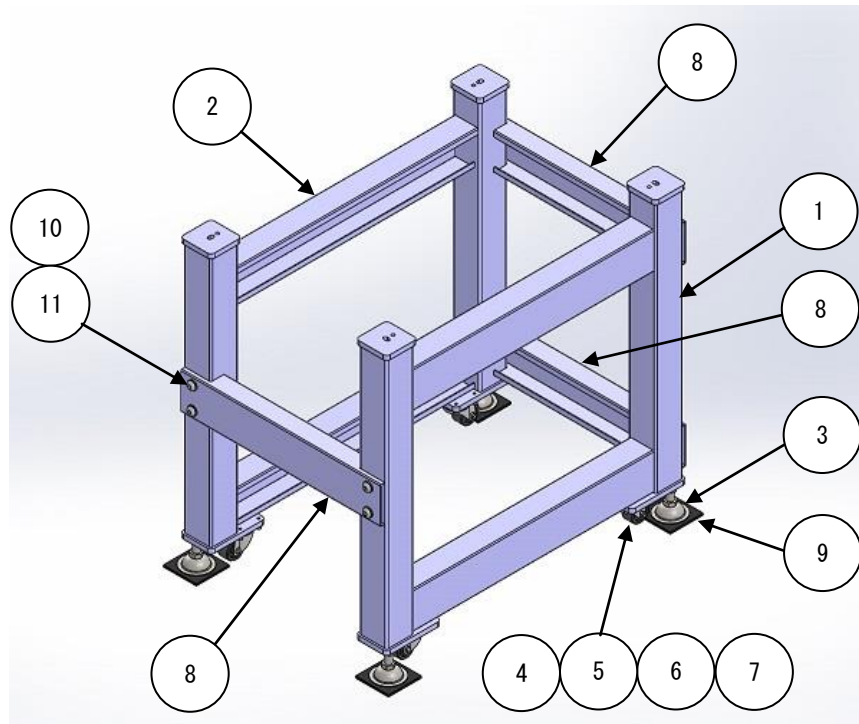
[Notes]

Please make sure to assemble the cart using the following instructions when installing a CBⅢ.

(Cart Parts List)

(Part Number) : NF 1 1 0 1 7 0

(Description) : CBⅢCart (Product Base for CBⅢ)



NO.	(Part No)	(Description)		(Q'ty)
1	NF110180	ベーススタンド (R)	Base Stand (R)	1
2	NF110190	ベーススタンド (L)	Base Stand (L)	1
3	A9019120	アジャスタパッド NFJN16-75	Adjust Pad	4
4	A9019121	キャスタ低床タイプ CHJF50A	Caster Low Floor Type	4
5	A1CB10614V0Z	六角穴付きボルト M6×14	Hex Socket Bolt	16
6	A3SW106V0	ばね座金 (2号) M6	Spring Washer	16
7	A3PW1061310V	平座金 M6	Plain Washer	16
8	NF110200	ジョイントブラケット	Joint Bracket	3
9	NF110210	防振パッド (GP)	Anti-vibration Pad	4
10	A1BB11220V0Z	六角穴付きボタンボルト M12×20	Hex Socket Button Bolt	12
11	A3PW1122425V	平座金 (並丸) M12	Plain Washer	12

Assembly Instructions

[Note]

Please make sure to assemble the cart with 2 or more persons for safety.



1) Remove all the parts included in the box.

Please make sure to check that all the parts listed in the previous parts list are included.



2) Place the 2 Base Stands with the casters upwards as shown in the left photo.

Please hold the base stands steady, so they don't fall down.



3) Mount the front Joint Bracket temporarily on the Base Stands.

Use (4) M12x20 Button bolts and washers included in the parts list to attach the Joint bracket. Do not tighten the bolts in all the way, leave them loose.

Parts List:

Item 10) M12x20 Hex Socket Button Bolt → 4 pcs

Item 11) M12 Plain Washer → 4 pcs





- 4) Please do the same procedure as 3) for the 2 back Joint Brackets. There are 3 of these Joint Brackets in total.
 ※ Again, do not tighten these bolts yet. They will be fully tightened later.

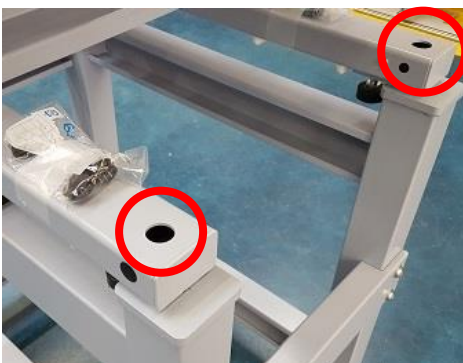


- 5) Turn the cart over so the casters are downwards.
 ※ Please be careful when turning the cart over. The cart will be loose and slightly unstable.



- 6) Install the CBIII on the top of the cart.
 Insert the (4) hex socket bolt heads on the bottom of the CBIII, into the (4) elongated holes on the top of the cart (See photos to the left).

Caution: Please do not hold or lift the machine by any other surface than the CBIII handles and make sure not to pinch your fingers.

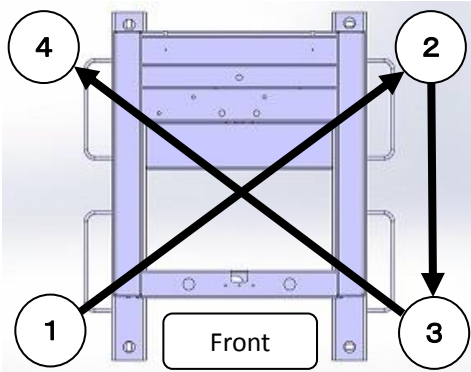


- 7) Insert a M10x30 Hex socket bolt into the 4 holes of the machine. (These bolts are included with the CBIII Machine Accessories).



8) Please tighten the (4) M10x30 bolts that were inserted in the previous step 7.

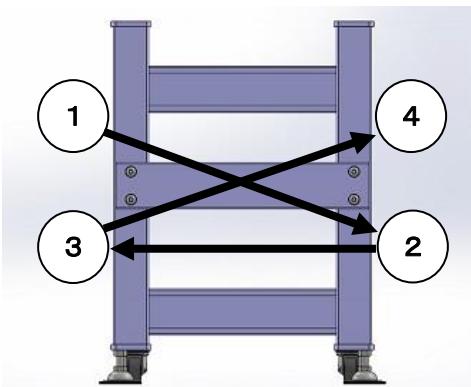
Please tighten in the following order shown below.



① Left front → ② Right back → ③ Right front
→ ④ Left back



9) Tighten the button bolts on all (3) Joint Brackets.
Please tighten in the following order as shown below.



※ Joint Brackets tightening order: Machine front →
Machine back upper → Machine back lower

※ Button Bolt tightening order for each Joint Bracket:

① Upper left → ② Lower right → ③ Lower left
→ ④ Upper left



10) Please level the cart by adjusting the height of the Adjuster feet, making sure the CBIII is level, left/right and front/back.

※ Anti-vibration Pads should be used under the feet.

※ Finally, check the machine's needle centering.