



Barudan

How to Assemble the CAII and CBII Cart (NR110200)

● Components

Parts Number	NR110210
Parts Name	Base Stand
Qty	2 pcs

Parts Number	NR110220
Parts Name	Joint bracket
Qty	2 pcs



Parts Number	NR110230
Parts Name	Power unit base
Qty	1 pc

Parts Number	A9019153
Parts Name	Leveling Foot
Qty	4 pcs

Parts Number	A3PW1122425V
Parts Name	M12 Plain washer
Qty	12 pcs



Parts Number	A1BB11220V0Z
Parts Name	Hex. Socket button bolt M12x20
Qty	12 pcs



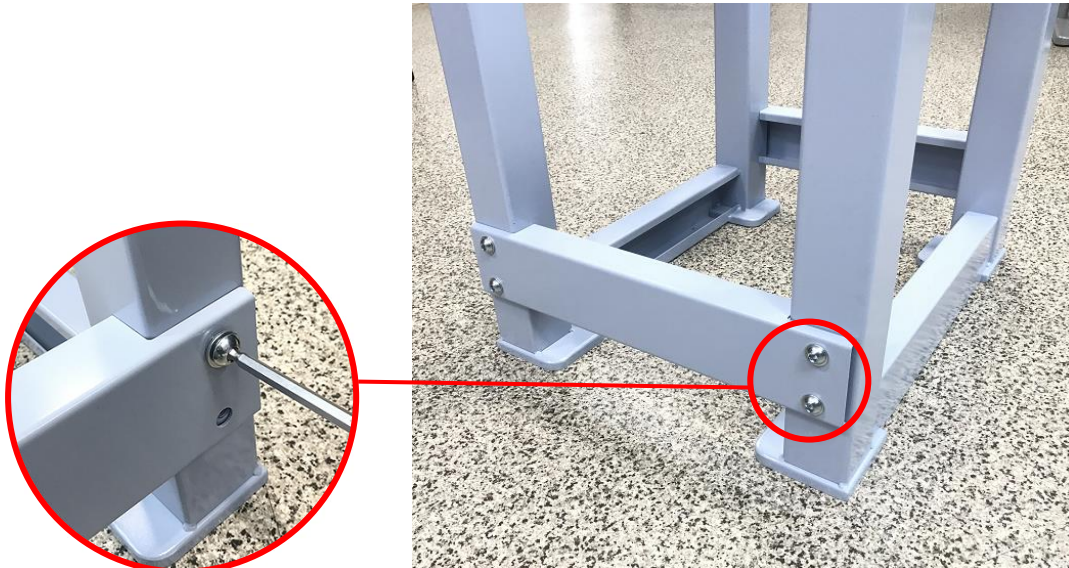
Barudan

●How to Assemble

1. Please set both base stands with the casters upwards as shown in the photo below.
Please hold on to the base stands so they don't fall down.



2. Attach the front and back Joint Brackets temporarily on base stands. Do not tighten at this point.
Use the "M12x20 Hex socket button bolts" and "M12 Plain Washers" to attach.



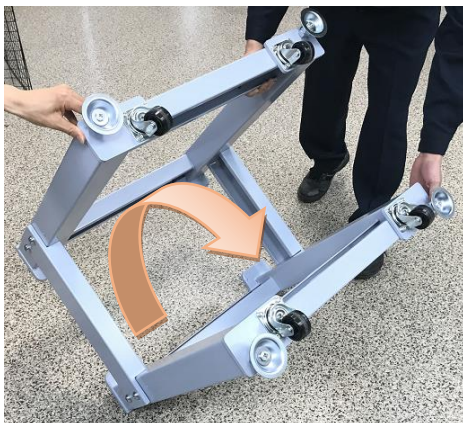


Barudan

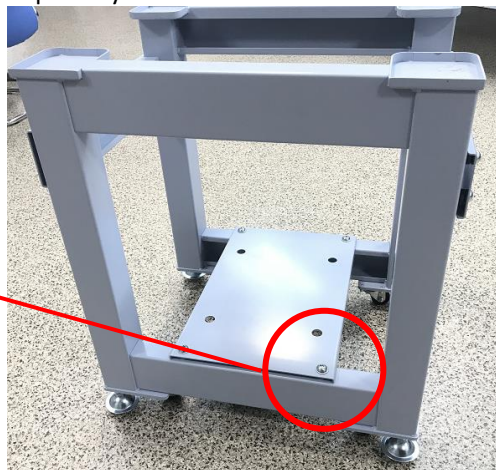
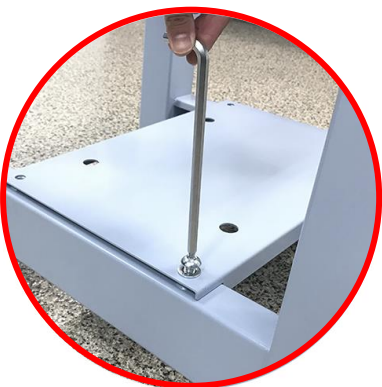
3. Insert the Leveling Feet into the base stand as shown in the photo below.



4. Turn the cart over so the casters are downwards.
*Please be careful when turning the cart over.



5. Mount the Power unit base to the cart temporarily with "M12x20Hex socket button bolts and washers".





Barudan

6. The last step once everything is put together is to tighten all the screws with a hex wrench.

