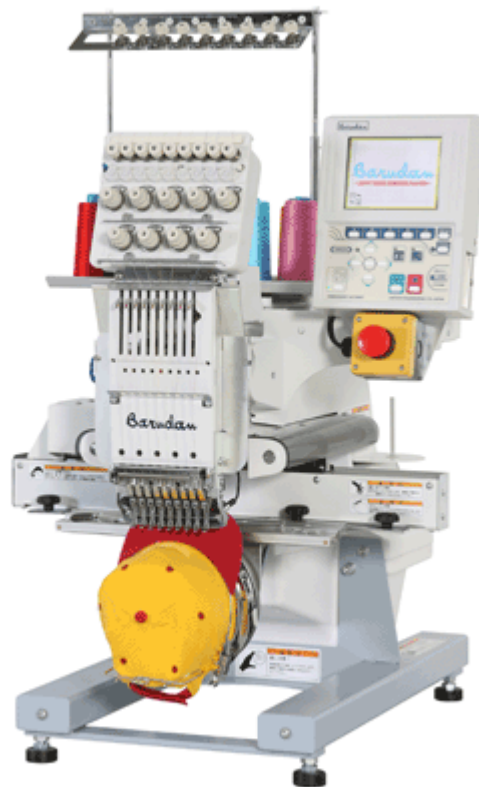


BEVT-S901CAII

Lubrication Instructions

Illustrations applicable to BEXT-S1501CBII & CBIII

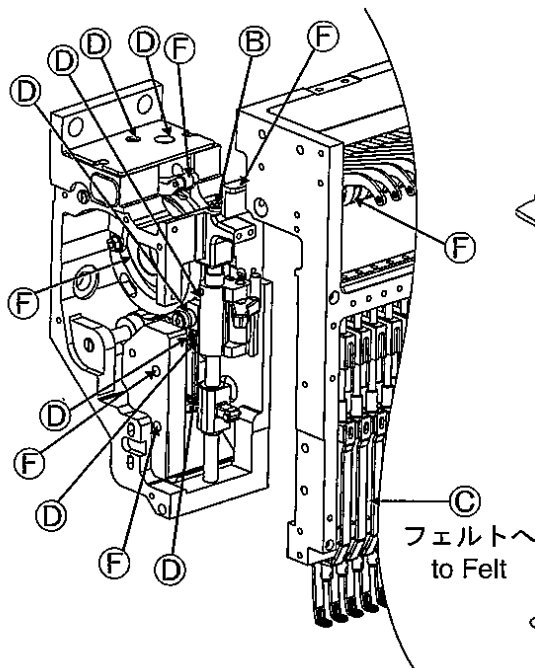


BEVT-S901CAII

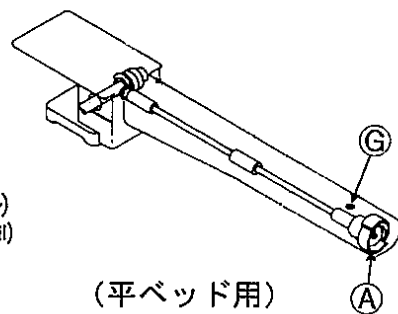
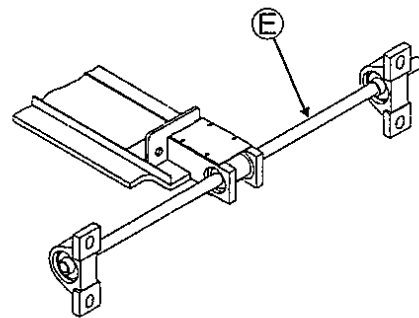
Please refer to the label shown below for oiling locations

The lubrication label is attached to the power unit.

注油指示 LUBRICATION



簡易型機のみ
Only Compact Machine Type



(平ベッド用)
Flat Bed

- Ⓐ 1回/4~6時間(ミシンオイル)
Once/4~6 Hours (Sewing Machine Oil)
- Ⓑ 1回/1週(ミシンオイルまたはマシンオイル)
Once/Week (Sewing Machine Oil or Machine Oil)
- Ⓒ 1回/2週(ミシンオイル)
Once/2Weeks (Sewing Machine Oil)
- Ⓓ 1回/1週(ベアリングオイル)
Once/Week (Bearing Oil)
- Ⓔ 1回/3月(グリース)
Once/Three Month (Grease)
- Ⓕ 1回/6月(グリース)
Once/Six Month (Grease)
- Ⓖ 1回/1週(ミシンオイル)
Once/Week (Sewing Machine Oil)

但しⒶ以外は1日8時間稼動した場合を示す
Frequency of lubrication is based on 8 hours
operation per day except Ⓐ

A - Rotating Hook

Every 4-6 hours of machine operation, lubricate the hook with Machine Oil.

1. Open the cover on the Cylinder Arm.
2. Remove the Bobbin & Bobbin Case.
3. Place a drop of oil in the Hook Raceway. Wipe away any excess oil.

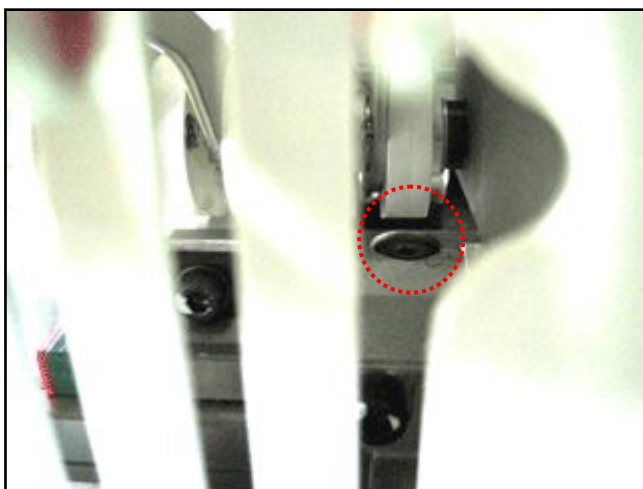
Note: This photo shows the Squeeze Oiler. Be sure to use clear Machine oil.



B - Drive Shaft

Once a week, lubricate the Drive Shaft with Machine oil.

1. Color Change the head to the last needle (Needle 9).
2. Place (3) drops of oil in the shaft from the tip of the shaft with the Squeeze Oiler.

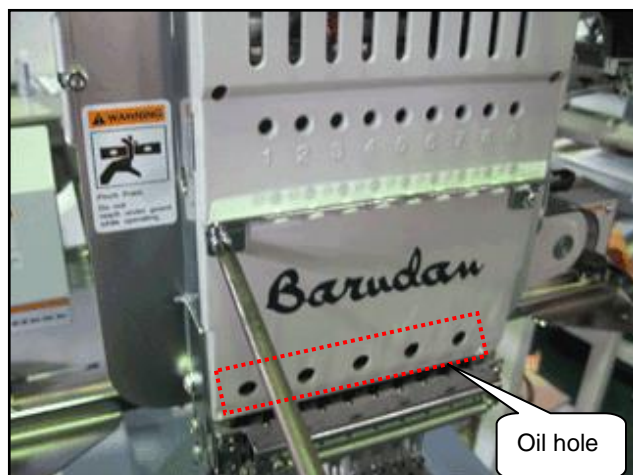


C - Needle Bar (Felt)

Once every two weeks lubricate the Needle Bars with Machine oil.
Remove the (2) screws for the Thread Guide and Head Cover.
Or lubricate from the oil holes as shown below.

Place a drop of oil in each oil hole (or Needle Bar) to oil the needle bar felt, using the Squeeze Oiler. Note: Do not over oil. Wipe up excess oil.

Note: You can also use a cotton swab saturated with oil, and oil the needle bars from behind the head with a thin film of oil.



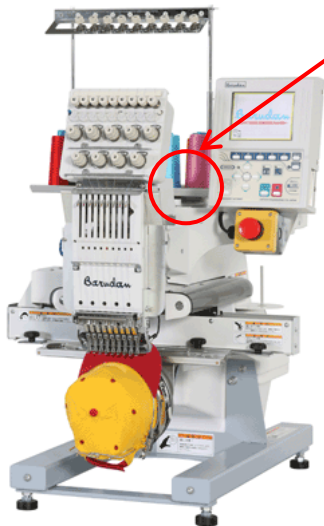
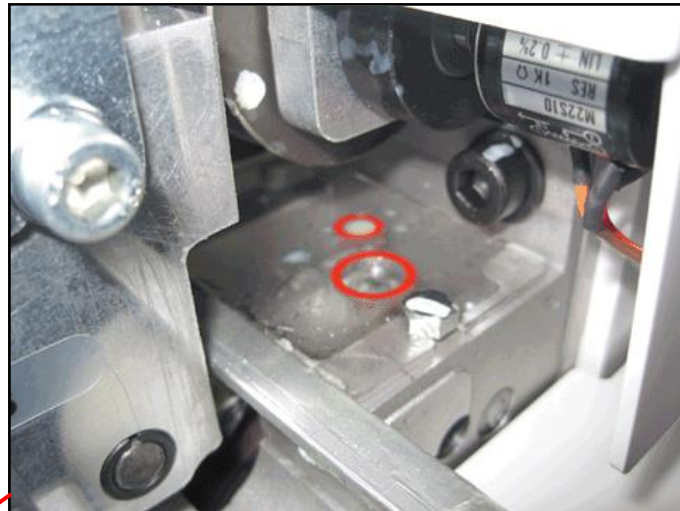
D1 - Needle Bar Crank Rod

D2 - Take-up Driver Lever

Once a week, lubricate the Needle Bar Crank Rod and the Take-up Driving Lever with (2) drops of Bearing Oil in each hole.

1. Color change the head to the last needle (Needle 9).
2. Place (2) drops of Bearing Oil in each of the red holes.

Note: The machine must be stopped when oiling these holes.



Oiling point is behind the tension assembly and under the color change assembly.

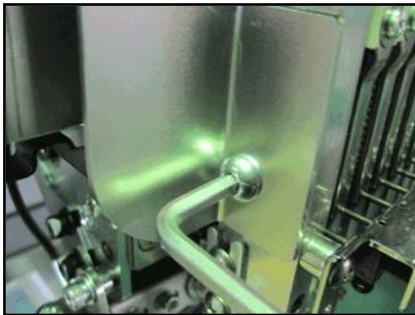
D3 - Needle Bar Drive Lever

D4 - Needle Bar Drive Links

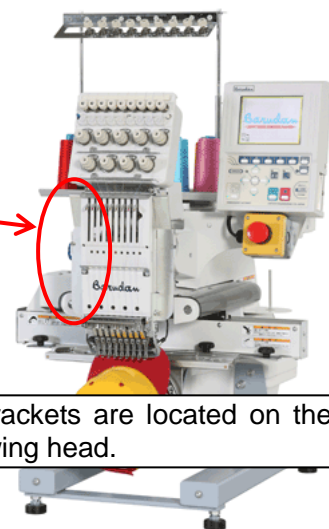
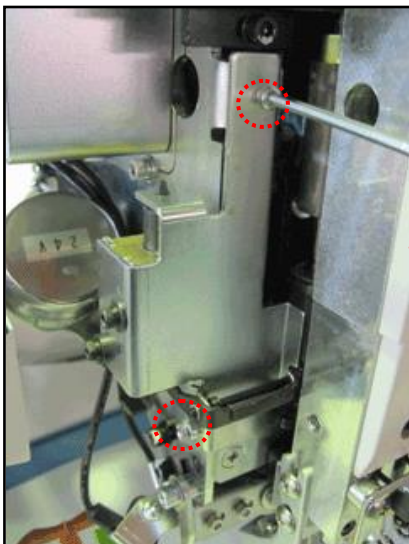
The following steps will be easier to perform if you remove the left side cover.

Note: Some of the following steps will be easier to understand after the first time you lubricate the machine, when you remove the covers and bracket.

1. Color change the machine to the Needle No.1.
2. Remove the Left side Flare cover by removing the (2) screws shown below.



3. Remove the Thread Support Bracket by removing the following (2) screws.

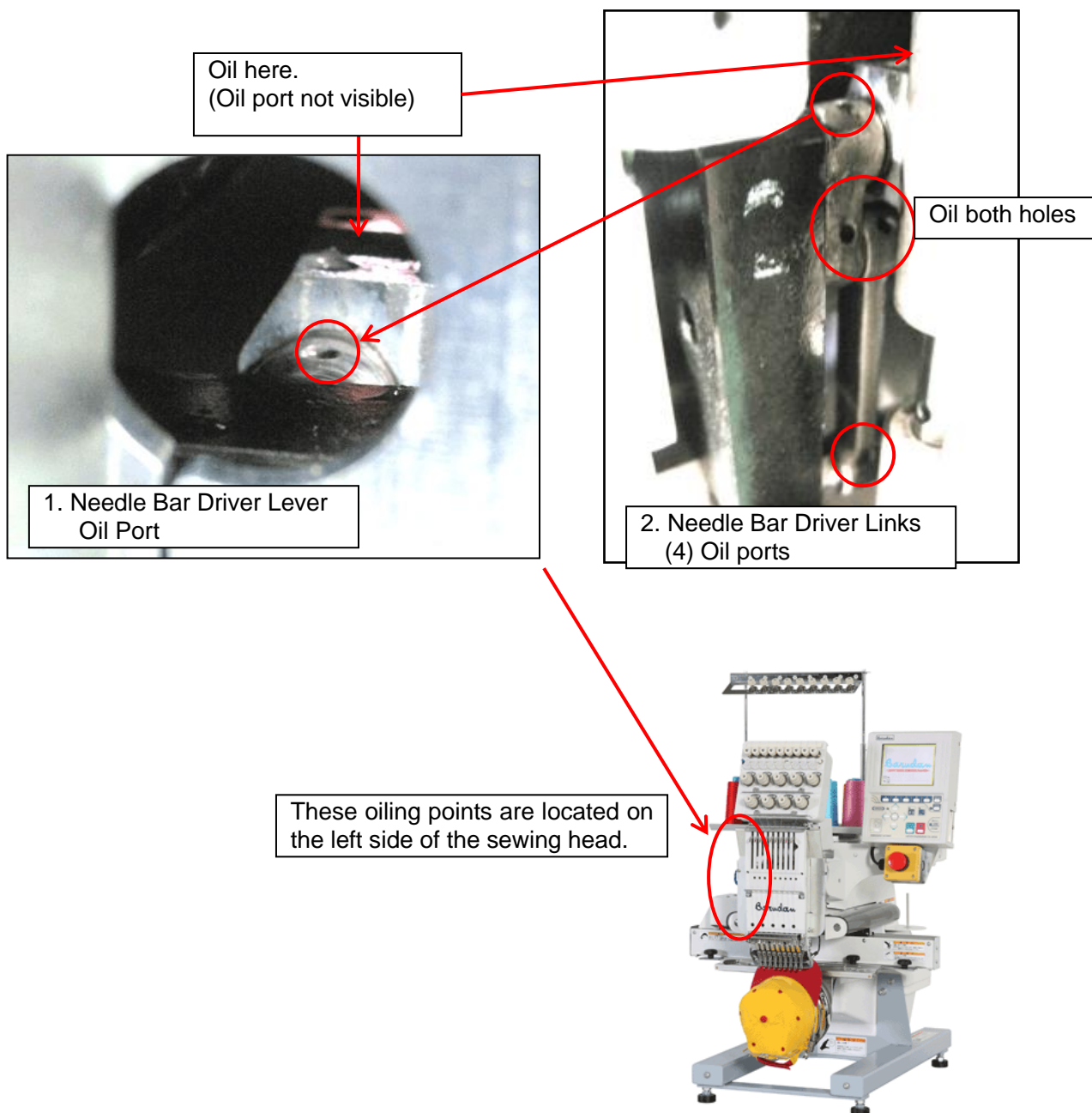


Covers and brackets are located on the left side of the sewing head.

Once a week, lubricate the Needle Bar Drive Lever and Needle Bar Drive Links with (1) drop of Bearing Oil in each hole.

Note: When the machine is the normal stop position, you should be able to see the (4) oil port holes for the drive links as shown below. If not, rotate the degree by hand to see the holes.

1. Place one drop of Bearing Oil in the hole for the Needle Bar Driver Lever.
2. Place one drop of oil in each of the (4) oil port holes for the Needle Bar Driver Links.



F1 - Take Up Lever

F2 - Take Up Lever Stocker

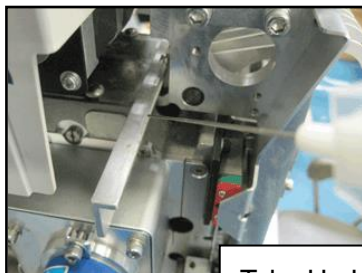
F3 - Take Up Lever Driving Roller

Every 6 months, lubricate the Take Up Levers and Take Up Lever stocker with White Lithium Spray Grease.

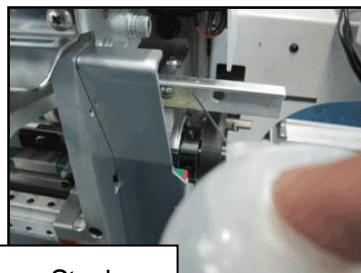
1. Remove the Head Cover.
2. Spray a small amount of White Lithium Spray Grease across all of the Take Up Levers in the front.



3. Color Change to Needle No.1 to spray the left side of the stocker. Then color change to the last needle to spray the right side of the stocker.
4. Spray a small amount of Spray Grease across the bottom of all the Take Up Levers and Take Up Lever Roller.



Take Up Lever Stocker

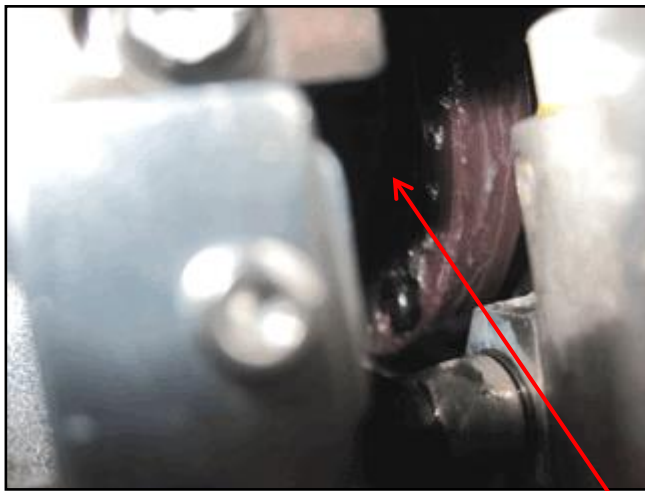


Take Up Lever Roller

F4 - Take Up Lever Cam

Every 6 months, lubricate the Take Up Lever Cam with White Lithium Spray Grease.

1. Color change the machine to Needle No.1.
2. Guide the spray tube of the Spray Grease Can up into the head and into the Cam groove, as shown below.

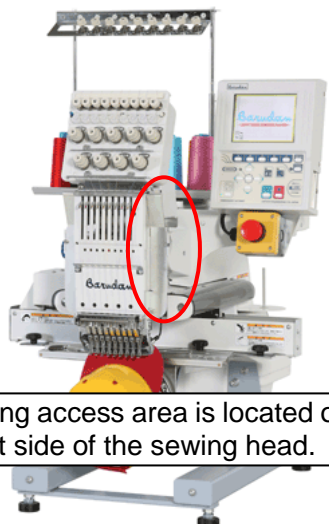
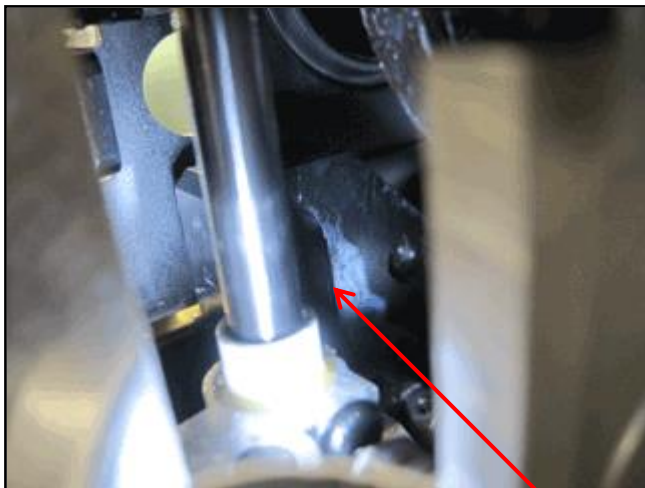


This oiling point is located on the left side of the sewing head.

F5 - Presser Foot Cam

Every 6 months, lubricate the Presser Foot Cam with White Lithium Spray Grease.

1. Color change the machine to the last Needle number (Needle 9).
2. Remove the Right side Flare cover and Main Shaft Cover. (For instructions, see Steps 2 and 4 in D3 - Needle Bar Drive Lever and D4 - Needle Bar Drive Links section. Note: Remove Right side flare cover instead of left side flare cover)
3. Rotate degree wheel to access Presser Foot Cam Grooves.
4. Guide the spray tube of the Spray Grease Can into the head, and into the Presser Foot Cam Grooves, as shown below.



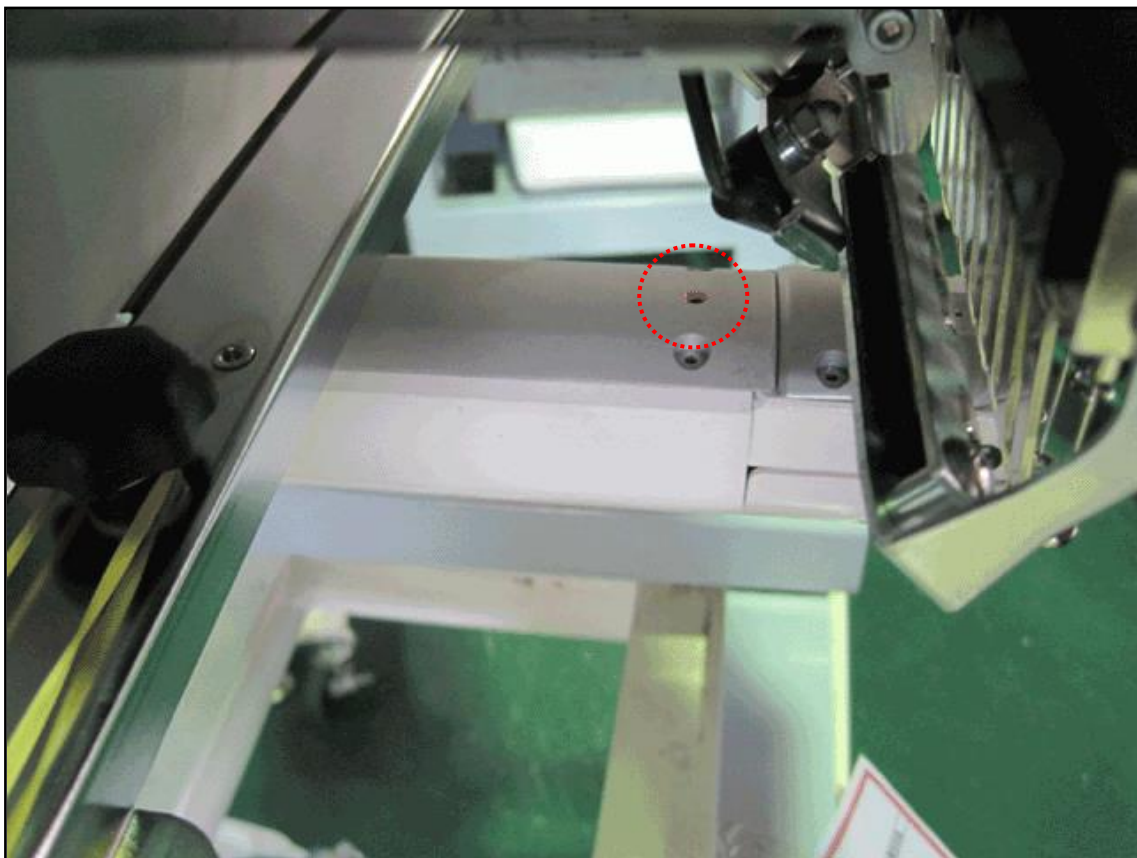
This oiling access area is located on the right side of the sewing head.



G - Hook Shaft Bushings

Once a week, lubricate the Hook Shaft Bushing with (2) drops of Machine oil in the cylinder arm hole

Hole is located at the end of the Cylinder Arm, right behind the Throat plate, as shown below.



H - Color Change Cam

Once a year, lubricate the Color Change Cam with White Lithium Spray Grease.

Turn off the machine power.

Remove the Tension base and (flat cable).

Spray White Lithium Spray Grease in the Color Change Cam while rotating the Cam with a Hex Wrench.

