

Barudan

PROPER SEQUENCE FOR UNCRATING MACHINES IN WOODEN CRATES

1. Remove all the lag bolts from the top, front, back and sides using a 10mm socket wrench.



2. Remove the top panel first, followed by the front panel.



Barudan

PROPER SEQUENCE FOR UNCRATING MACHINES IN WOODEN CRATES

3. Remove the silver packing foil by cutting towards the bottom. Be careful not to cut into any of the parts that are strapped to the side of the machine, or any of the machine components.



4. Using a pry bar or a hammer, remove the nails to allow for the removal of the back and side panels from the crate.



Barudan

PROPER SEQUENCE FOR UNCRATING MACHINES IN WOODEN CRATES

5. Cut away the strapping that is holding the tables and the components to the machine. Remove the components and set them aside.



6. Remove the 4 bolts on the feet that are holding the machine to the skid, using a 20mm wrench.



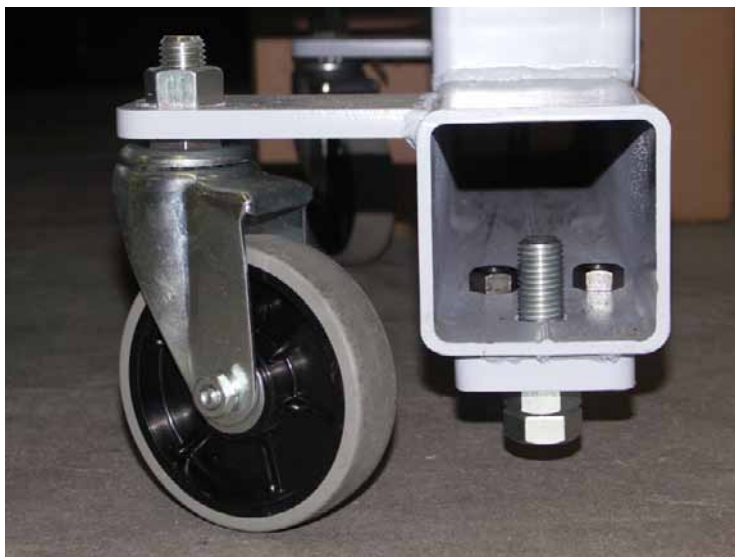
Barudan

PROPER SEQUENCE FOR UNCRATING MACHINES IN WOODEN CRATES

7. With a forklift, lift from the middle of the machine and remove the skid.



8. While the machine is in the air, remove the wheels and place them in the correct position. As well place the leveling bolts (located on the bottom left support beam in bubble wrap) through the threaded holes in the feet. Ensure that they are in the full up position allowing the machine to roll freely.



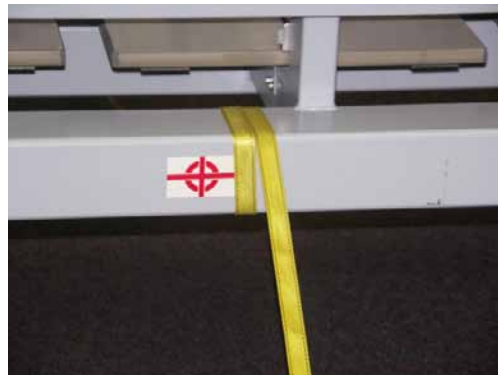
Barudan

STRAPPING PROCEDURE FOR MULTI-HEAD MACHINES

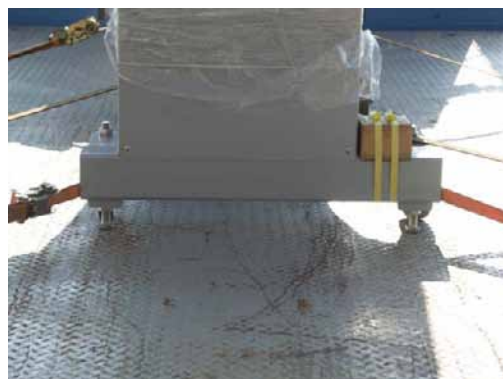
1. Raise or roll the machine onto the truck. Lower the feet to allow the full weight of the machine to be resting on them. The wheels should **NOT** be in contact with the truck bed.
2. Secure the machine using at least 3 straps or chains as follows:
 - A) 1 strap at the front of the frame, passing through the foot tube.



- B) 1 strap in the middle of the frame, looped around the frame at the centre point.



- C) 1 strap at the back of the frame, passing through the foot tube.



Barudan

STRAPPING PROCEDURE FOR MULTI-HEAD MACHINES

Once the machine is fully strapped and secure as pictured below, it is ready for transport.

