



No. ED1904239-01E

Technical Information

Barudan

Subject	Attention for cleaning the KS/KY Automat touch screen		
Date	April. 17, 2019	Page	1 / 2
Model	KS and KY Automat	Class	Information

BAJ Ref:RA1052 7th Mar 2019

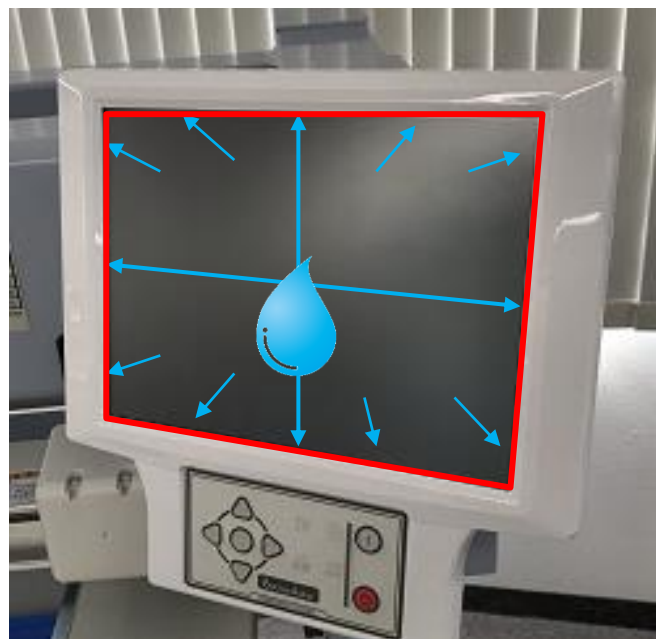
We have received reports about touch panel screen operations being disabled on KS/KY Automats. See the following instructions for details.

When cleaning the touch panel screen on a KS/KY Automat, please do not spray liquid cleaner directly on the touch panel screen or use an extremely wet cloth. This is to avoid drops of liquid from entering the LCD interior from the edges of the screen as shown in the following photo. If liquid enters, the touch panel screen will not operate correctly or the display will go blank.

Correspondence:

- Recommend using a micro fiber cloth or other absorbent cloth, with a light spray of screen cleaner directly on the cloth. Then lightly wipe the screen with the cloth to clean it, without any excessive moisture getting on the screen.

Note: If at any time excessive liquid gets on the screen, remove it immediately with an absorbent cloth to avoid damage.



Drops of liquid can enter thru the red area shown in the photo above.



No. ED1904239-01E

Technical Information

Barudan

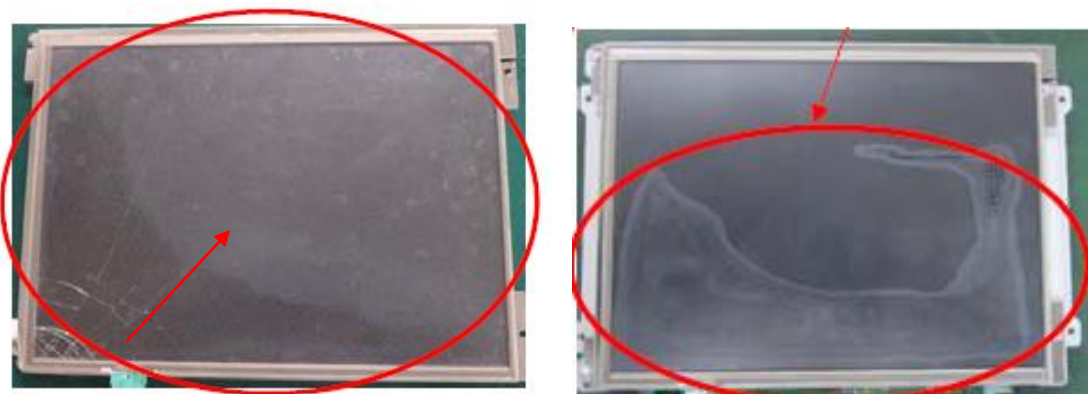
Subject	Attention for cleaning the KS/KY Automat touch screen		
Date	April. 17, 2019	Page	2 / 2
Model	KS and KY Automat	Class	Information

BAJ Ref:RA1052 7th Mar 2019

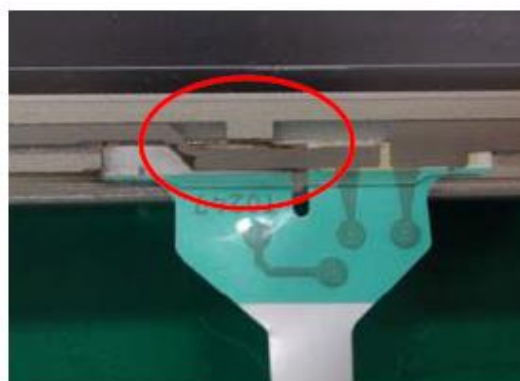
- The protect film used on the touch panel screen will be expanded in comparison with the current one to avoid liquid from entering. It will be sometime after May when the new protect film will be available. Even after the change, please do not use a liquid cleaner or wet cloth. (The KT Automat will have the new protect film starting with the 1st production machines)

◆ **What to look for :**

- When liquid enters, the touch panel screen will look as shown in the following photo, and all or one area of the touch panel screen will be inoperable or the display will be blank.



- The ribbon cable for the LCD will be rusty or corroded as shown in the following photo, and all or one area of the touch panel screen will be inoperable or the display will be blank.



END